

Audio Transformers

PC Mount

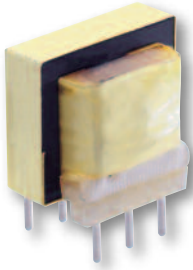


Figure A

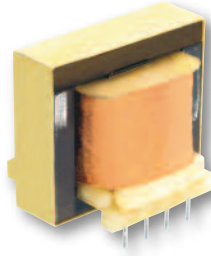


Figure B

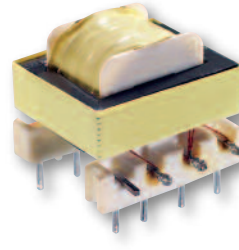


Figure C

:: Description

Triad produces a wide assortment of audio transformers for use in printed circuit designs. These transformers fill a broad application spectrum in the audio industry. Triad audio printed circuit transformers are used in line matching, telephone coupling, pulse trigger, interstage, output, isolation and input applications.

:: Specifications

Frequency Response Range From: 20 - 20,000 Hz
Impedance Matching: 10% over frequency range

:: Plug-in Printed Circuit Audio Transformers

Section	Type No.	Output mW	Primary Impedance	Secondary Impedance	Figure	Pri. DC Unbalance	Dimensions						Wt. Oz.		
							H	W	L	A	B	C		D	J
A	TY-141P	100	10,000 CT	10,000 CT	A	4mA	0.740	0.812	0.700	0.421	0.421	0.187	•	0.042	0.51
	TY-142P	100	10,000 CT	2,000 CT	A	4mA	0.740	0.812	0.700	0.421	0.421	0.187	•	0.042	0.51
	TY-144P	100	15,000 CT	15,000 CT	A	4mA	0.740	0.812	0.700	0.421	0.421	0.187	•	0.042	0.51
	TY-145P	100	600 CT	600 CT	A	15mA	0.740	0.812	0.700	0.421	0.421	0.187	•	0.042	0.51
	TY-146P	1000	600 CT/150§	600 CT/150§	B	•	1.187	1.187	1.375	0.203	1.031	0.187	•	0.042	3.0
	TY-250P	20	1000 CT	1000 CT/250§*	C	4mA	0.700	0.900	0.770	0.200	0.520	0.200	0.150	0.025	0.4

§ Split secondary * 600:600Ω, 10K:10KΩ, 100K:100KΩ, 1M:1MΩ, and other impedances are optional as long as input voltage is ≤4.2Vrms and current is ≤7mA.

Technical Notes

1. Plug-in terminals are spaced to provide fixed mounting centers.

