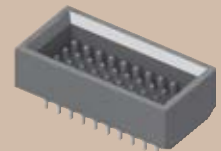
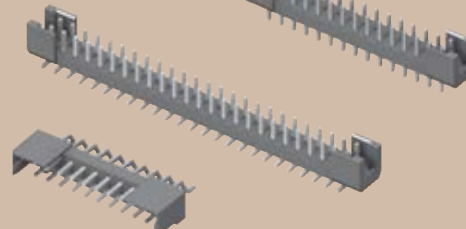


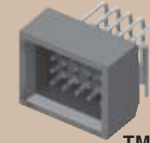


TSH-125-01-F-DV

TSH-115-01-T-D



TMMS-110-01-L-Q-FS



TMMS-105-01-F-Q-RA-FS

TSH-110-01-L-DH-SL

(2,00 mm) .0787"

TSH, TMMS SERIES

# SHROUDED HEADERS

Mates with:  
CLT, SQT, SQW, ESQT,  
TLE, SMM, MMS, PTF

## SPECIFICATIONS

For complete specifications and recommended PCB layouts see [www.samtec.com?TSH](http://www.samtec.com?TSH)

**Insulator Material:**  
Black Liquid Crystal Polymer



**Terminal Material:**  
Phosphor Bronze

**Plating:**  
Sn or Au over  
50µ" (1,27 µm) Ni

**Current Rating:**  
3A per contact @ 80°C ambient

**Operating Temp Range:**  
-55°C to +105°C with Tin;  
-55°C to +125°C with Gold

**RoHS Compliant:**  
Yes

### Processing:

**Lead-Free Solderable:**  
Yes

**SMT Lead Coplanarity:**  
(0,15 mm) .006" max

**Note:** Some lengths, styles and options are non-standard, non-returnable.

<b>TSH</b>	<b>1</b>	<b>NO. PINS PER ROW</b>	<b>01</b>	<b>PLATING OPTION</b>	<b>ROW OPTION</b>	<b>OTHER OPTION</b>
<b>05, 10, 15, 20, 25, 30, 35, 40, 45</b> (40 & 45 = -D & -RA only) (Call Samtec for other sizes)			<b>-F</b> = Gold flash on post, Matte Tin on tail  <b>-L</b> = 10µ" (0,25 µm) Gold on post, Matte Tin on tail  <b>-T</b> = Matte Tin		<b>-D</b> = Vertical Through-Hole  <b>-DV</b> = Vertical Surface Mount  <b>-RA</b> = Right Angle Through-Hole  <b>-DH</b> = Horizontal Surface Mount	
			<b>Note:</b> Other Gold plating options available. Contact Samtec.		<b>-LC</b> = Locking Clip (-DV only) (N/A with -A) (Manual placement required)  <b>-A</b> = Alignment Pin (-DV only) (N/A with -LC)  <b>-SL</b> = Solder Locks (-DH only)  <b>-K</b> = (4,50 mm) .177" DIA Polyimide Film Pick & Place Pad (N/A with 15 - 30 positions) (-DH only)  <b>-M</b> = Metal Pick & Place Pad (-DV only) (N/A -T plating)  <b>-TR</b> = Tape & Reel	

Mates with:  
SQT, SQW, ESQT

## SPECIFICATIONS

For complete specifications see [www.samtec.com?TMMS](http://www.samtec.com?TMMS)

**Insulator Material:**  
Black LCP



**Terminal Material:**  
Phosphor Bronze

**Plating:**  
Sn or Au over  
50µ" (1,27 µm) Ni

**Operating Temp Range:**  
-55°C to +105°C with Tin;  
-55°C to +125°C with Gold

**RoHS Compliant:** Yes

**Lead-Free Solderable:** Yes

CURRENT RATING (PER CONTACT)	
AMBIENT TEMP	TMMS Mated with SQT
20°C	5.5A
40°C	5A
60°C	4A
80°C	3A

**Note:** Some lengths, styles and options are non-standard, non-returnable.

<b>TMMS</b>	<b>1</b>	<b>NO. PINS PER ROW</b>	<b>01</b>	<b>PLATING OPTION</b>	<b>Q</b>	<b>OPTION</b>	<b>FS</b>
<b>05, 10, 15, 20, 30, 40, 50</b>			<b>-F</b> = Gold flash on post, Matte Tin on tail  <b>-L</b> = 10µ" (0,25 µm) Gold on post, Matte Tin on tail		<b>-RA</b> = Right Angle		
			<b>Note:</b> Other Gold plating options available. Contact Samtec.				

Due to technical progress, all designs, specifications and components are subject to change without notice.

[WWW.SAMTEC.COM](http://WWW.SAMTEC.COM)