

SERIES TL 1015 SWITCHES

TACT SWITCHES SMT - TOP ACTUATED



FEATURES & BENEFITS

- ▶ Ultra-miniature design
- ▶ SMT Technology
- ▶ Tape & Reel

APPLICATIONS/MARKETS

- ▶ Telecommunications
- ▶ Consumer Electronics
- ▶ Audio/visual
- ▶ Medical
- ▶ Testing/instrumentation
- ▶ Computer/servers/peripherals

SPECIFICATIONS

Contact Rating:	12VDC, 50mA
Life Expectancy:	50,000 cycles minimum
Contact Resistance:	100mΩ max.
Insulation Resistance:	100MΩ min.
Dielectric Strength:	250 VAC
Actuator Force:	160 ± 50 gf min.
Operating Temperature:	-20°C to +70°C
Travel:	0.20 Typ

MATERIALS

Housing:	Nylon 46
Actuator:	Nylon 46
Cover:	Stainless Steel
Contact Dome:	Stainless Steel
Terminals:	Brass
Tape & Reel:	2500 pieces per reel

HOW TO ORDER

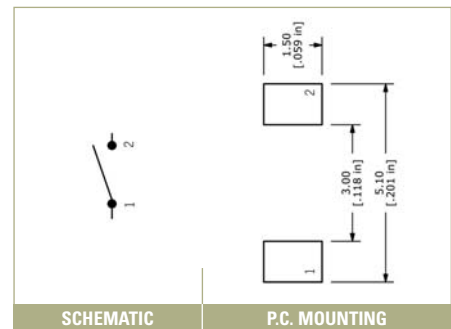
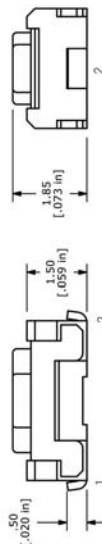
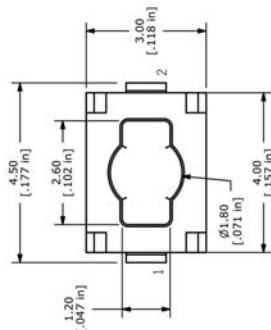
SERIES	MODEL NO.	BOSS	OPERATING FORCE	CONTACT MATERIAL	TERMINATION
TL	1015	A = no boss B = boss	F160	Q = Silver	G = Gull

Example Ordering Number

TL-1015-A-F160-Q-G

Specifications subject to change without notice.

TL 1015



SCHEMATIC

P.C. MOUNTING