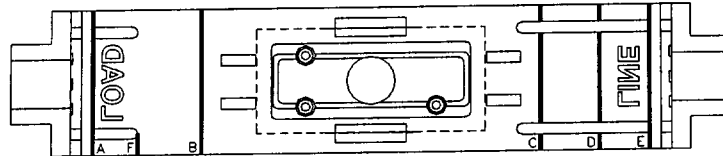


TRIMMING INSTRUCTIONS FOR USE IN SAFETY SWITCHES

SAMI-1



NOTE: Trimming marks are located on underside of fuse covers.

SAFETY SWITCH MANUFACTURER	SWITCH CATALOG SYMBOL	CLASS FUSE	VOLTAGE	CURRENT	TRIM LOCATIONS	APPEARANCE AFTER TRIMMING	IP RATING * (IEC 529)
Challenger	GD322SNC Model 0	R	240	60	E		IP10
	HD361SNC	J	600	30	C		IP10
Cutler-Hammer	DG222NGB	R	240	60	A, E		IP10
GE	TH4322 Model 7	R	240	60	A, F		IP10
	TH3361 Model 0	J	600	30	B, C		IP10
Siemens	JN422 Series A	R	240	60	E		IP10
	F351 Series A	J	600	30	C		IP10
Square D	H322N Series F1	R	240	60	D		IP10
	H361RB Series E1	J	600	30	Not Compatible	Not Compatible	IP10
Westinghouse	GFN322N	R	240	60	E		IP10
	HFN361	J	600	30	C		IP10

* IEC 529 provides a classification system for the degree of protection of equipment enclosures and associated panel components, with respect to the ingress of solid objects and water.

Care is advised when trimming the SAMI. Excessive trimming will jeopardize the index of protection rating specified.

The SAMI should be installed so that the handle is directly over the center of the fuse. Neglecting to do so may cause the indicator to malfunction or may jeopardize the index of protection rating specified.

WARNING: To avoid Electrical Shock, **TURN POWER OFF** before Installing, Removing, or Servicing.

The only controlled copy of this BIF document is the electronic read-only version located on the Bussmann Network Drive. All other copies of this BIF document are by definition uncontrolled. This bulletin is intended to clearly present comprehensive product data and provide technical information that will help the end user with design applications. Bussmann reserves the right, without notice, to change design or construction of any products and to discontinue or limit distribution of any products. Bussmann also reserves the right to change or update, without notice, any technical information contained in this bulletin. Once a product has been selected, it should be tested by the user in all possible applications.