

# PVA Short Stroke Key Switches

## Features/Benefits

- Compact design
- Short stroke to latch
- Wide variety of actuator heights and styles
- Adapted for medium power applications
- RoHS compliant and compatible

## Typical Applications

- Automotive (air conditioning, lighting)
- Video, remote controls
- Electronic games



## Construction

FUNCTION: Momentary, Push-Push

CONTACT ARRANGEMENT:<sup>1</sup>

PVA1: 2 make contacts (DPST)

PVA2: 2 change over contacts (DPDT)

MODE SWITCHING: Non-shorting

TERMINALS: PC pins<sup>2</sup>

## Mechanical

TOTAL TRAVEL / LATCHING TRAVEL:

OA: 2,4± 0,2 (0.094 ± 0.008)

EE: 2,4± 0,2 (0.094 ± 0.008)/ 1,5 (0.059)

OPERATING FORCE: 1.2 ± .25 (120 grams);

1.7 ± .25 (170 grams); 3.5 ± .25 (350 grams)

## Process

SOLDERABILITY:

Hand soldering: 350°C for 3 seconds

Wave or bath soldering: 260°C for 5 seconds

Cleaning: Use solvents compatible with ABS

## Electrical

SWITCHING POWER MAX.: 3 W DC

SWITCHING VOLTAGE MAX.: 32 V DC

SWITCHING CURRENT MAX.: 100 mA DC\*

DIELECTRIC STRENGTH (50 Hz / 1 min):

1000 V between open contacts, PVA2: 750 V

OPERATING LIFE:

OA (momentary): ≥ 1 x 10<sup>5</sup> operations

EE (push-push): ≥ 1 x 10<sup>5</sup> operations

CONTACT RESISTANCE: Initial ≤ 100 mΩ; 50mΩ

After life: 150 mΩ

INSULATION RESISTANCE: ≥ 10<sup>10</sup> Ω

BOUNCE TIME: ≤ 3 ms

## Environmental

OPERATING TEMPERATURE: -40°C to 85°C.<sup>3</sup>

1) Other contact arrangements available by request

2) "Snap-in" contacts on request, Version SNA with pins bent inside (standard)

3) With button +70°C

\* By 13,8 VDC, the PVA supports a peak current of 500 mA and a continuous current of 200 mA.

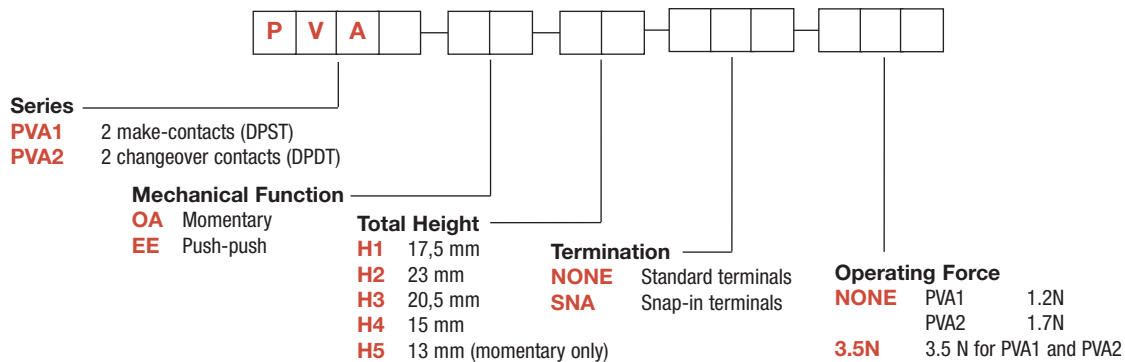
**Note:** Specifications listed above are for switches with standard options.

For information on specific and custom switches, consult Customer Service Center.

## How To Order

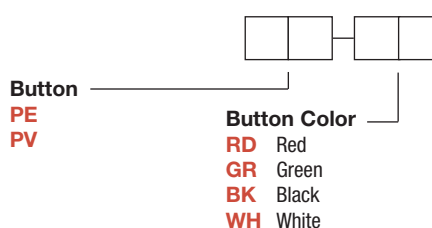
Our easy build-a-switch concept allows you to mix and match options to create the switch you need. To order, select desired option from each category and place it in the appropriate box.

### Switch



### Button

Buttons must be ordered separately.  
Shipped in bulk.



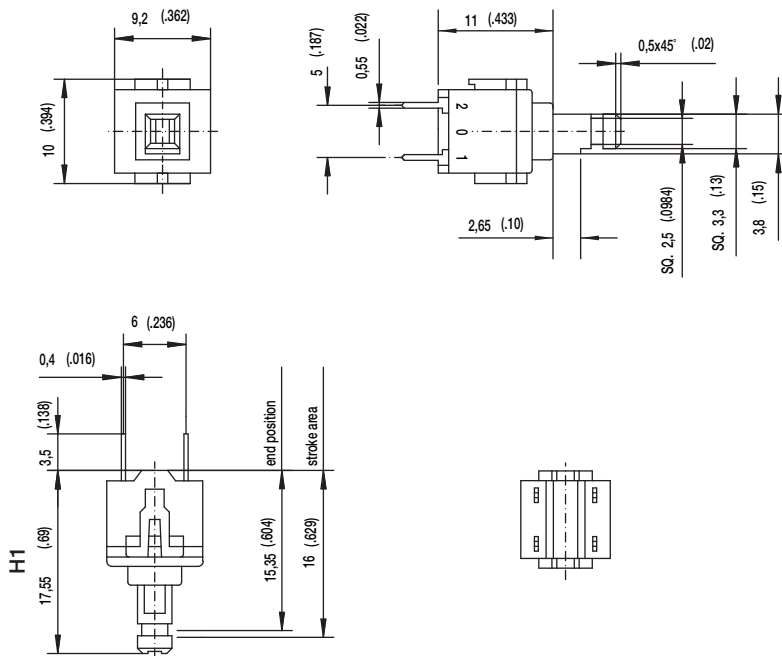
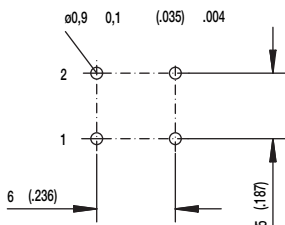
Dimensions are shown: mm (inch)  
Specifications and dimensions subject to change

www.ittcannon.com

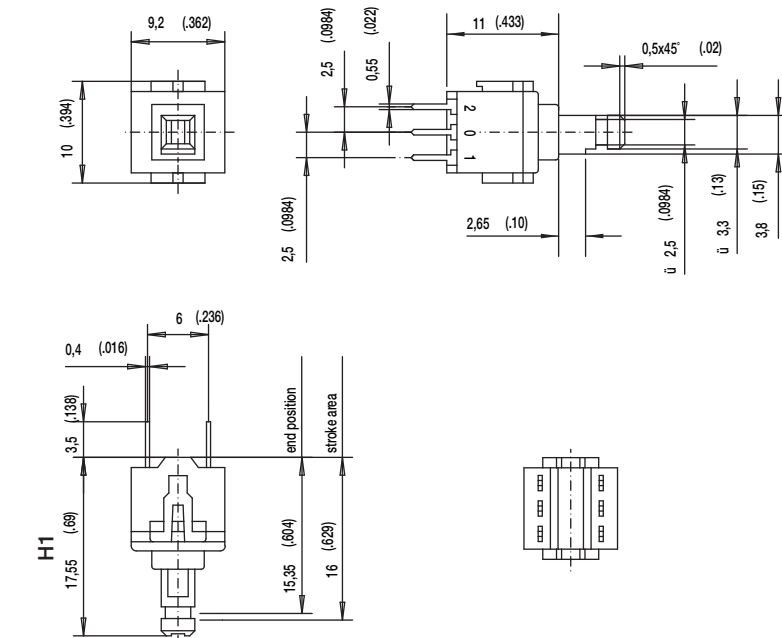
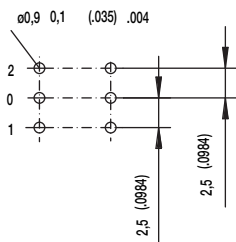
# PVA Short Stroke Key Switches

SERIES

## PVA1 (DPST)



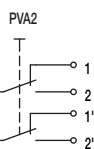
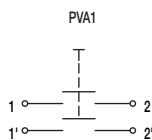
## PVA2 (DPDT)



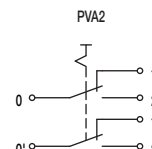
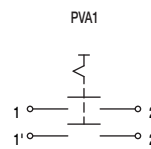
## MECHANICAL FUNCTION

OPTION CODE	FUNCTION
OA	Momentary
EE	Push-Push

### OA



### EE

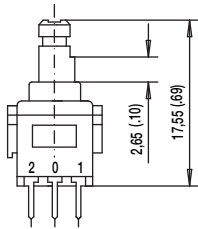


First Angle Projection  
Dimensions are shown: mm (inch)  
Specifications and dimensions subject to change

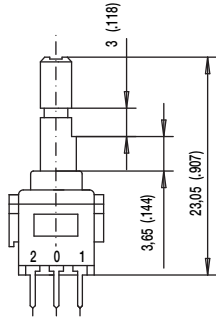
# PVA Short Stroke Key Switches

## TOTAL HEIGHT

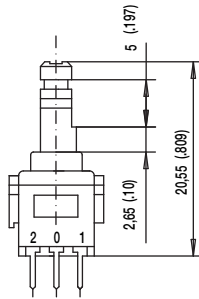
**H1** 17,5 MM



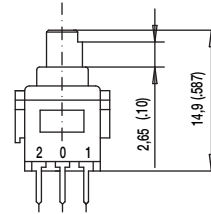
**H2** 23 MM



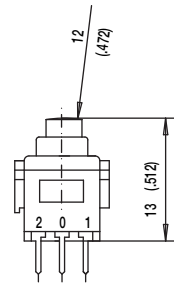
**H3** 20,5 MM



**H4** 15 MM

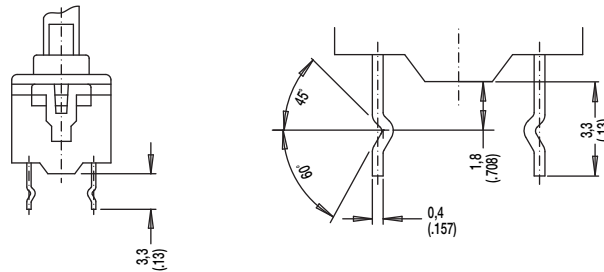


**H5** 13 MM  
(MOMENTARY ONLY)



## TERMINATION

**SNA**



## OPERATING FORCE

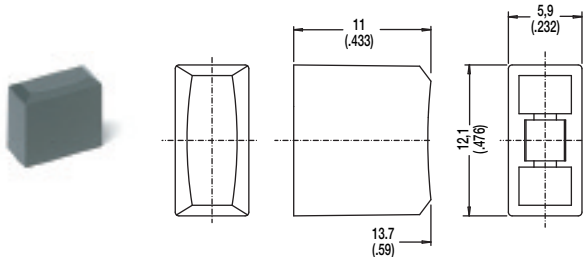
**NONE** PVA1 1.2 N  
PVA2 1.7 N

**3.5N** 3.5 NEWTONS PVA1 & PVA2

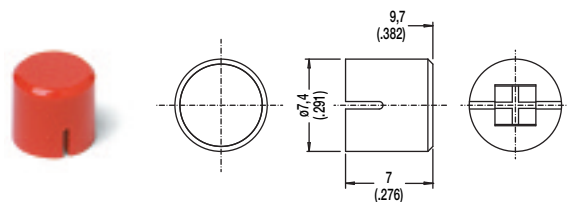
## BUTTONS

BUTTONS MUST BE ORDERED SEPARATELY. SHIPPED IN BULK.

**PE**



**PV**



OPTION CODE	COLOR
<b>RD</b>	Red
<b>GY</b>	Gray
<b>BK</b>	Black
<b>WH</b>	White



Dimensions are shown: mm (inch)  
Specifications and dimensions subject to change



Key Switches