

# Photovoltaic Fuse Links for Solar Panel Applications

## String Protection Fuse Links 1A to 20A 1000Vdc

### PV Series



**Description:** A range of fuse links in a 10x38mm package specifically designed for the protection and isolation of photovoltaic strings. The fuse links are capable of interrupting low overcurrents associated with faulted PV (reverse current, multi-array fault) string arrays.

**Catalogue Symbol:** PV-(amp rating)A10F  
PV-(amp rating)A10-T  
PV-(amp rating)A10-1P  
PV-(amp rating)A10-2P

**Class of Operation:** gPV and UL PV fuse links

**Fuse Holders:** PCB Clip: 1A3400-09  
Modular fuse holder:  
CHM1D-PV-IEC  
CHPV1 (1-pole non-indicating)  
CHPV1I (1-pole neon indicating)

**Standards/Approvals:** IEC 60269-6, UL 2579,  
RoHS compliant,  
UL Listed (1-15A) E335324  
Pending: CCC

**Packaging:** MOQ: 10  
Packaging 100% recyclable

**Technical Data:**

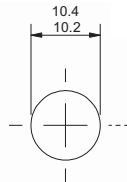
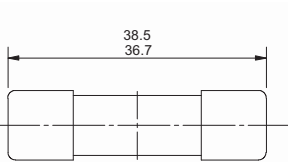
Rated Voltage:	1000Vdc		
Amps:	1-6A, 8-15A and 20A		
Rated Breaking Capacity:	UL	IEC	
	1-6A	10kAdc	40kAdc
	8-15A	10kAdc	33kAdc
20A	N/A	10kAdc	

**Min Interrupting Rating:** 1.3 x I<sub>n</sub>

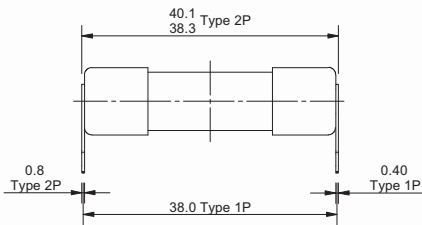
**PV Fuse Coordination w/:** Thin film cells and 4", 5" and 6" crystalline silicon cells.

**Time Constant:** 1-3ms

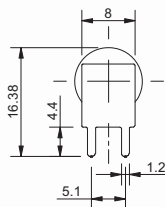
#### Dimensions - mm



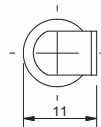
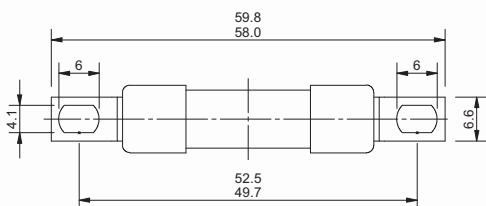
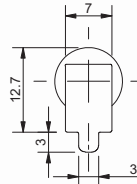
**CYLINDRICAL**  
(PV-\*\*A10F)



(PV-\*\*A10-2P)



**PCB FIXING**  
(PV-\*\*A10-1P)



**BOLT FIXING**  
(PV-\*\*A10-T)



# Photovoltaic Fuse Links for Solar Panel Applications

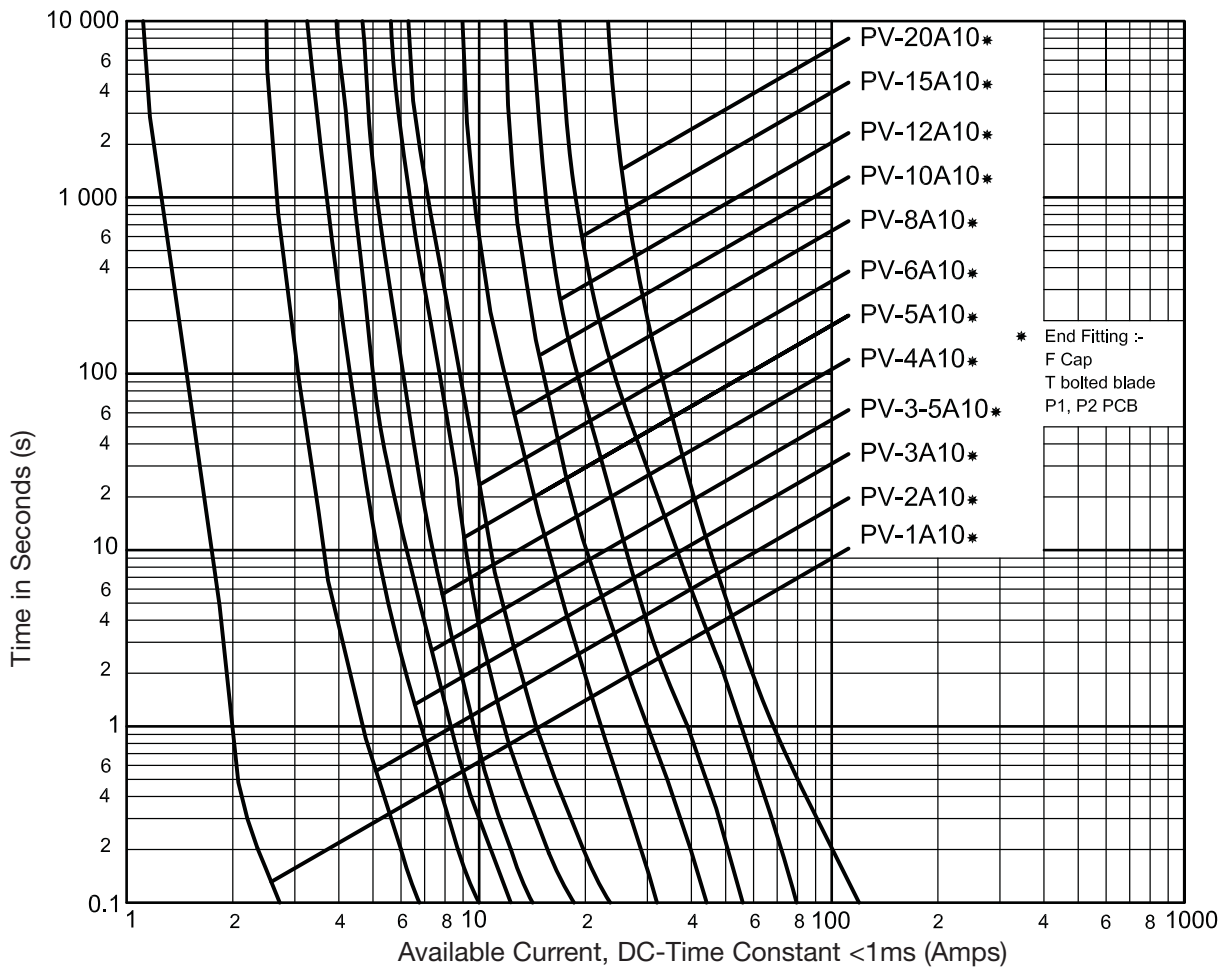
## String Protection Fuse Links 1A to 20A 1000Vdc

### PV Series

#### Technical Data

Part Number	Current Rating (Amps)	Energy Integrals $I^2t$ (A <sup>2</sup> s)		Watts Loss	
		Pre-Arcing	Total at 1000V	0.8 $I_n$	$I_n$
PV-1A10F	1	0.15	0.4	0.8	1.5
PV-2A10F	2	1.2	3.4	0.6	1.0
PV-3A10F	3	4	11	0.8	1.3
PV-3-5A10F	3.5	6.6	18	0.9	1.4
PV-4A10F	4	9.5	26	1.0	1.5
PV-5A10F	5	19	50	1.0	1.6
PV-6A10F	6	30	90	1.1	1.8
PV-8A10F	8	3	32	1.2	2.1
PV-10A10F	10	7	70	1.2	2.3
PV-12A10F	12	12	120	1.5	2.7
PV-15A10F	15	22	220	1.7	2.9
PV-20A10F	20	34	350	2.1	3.6

#### Time-Current Characteristics

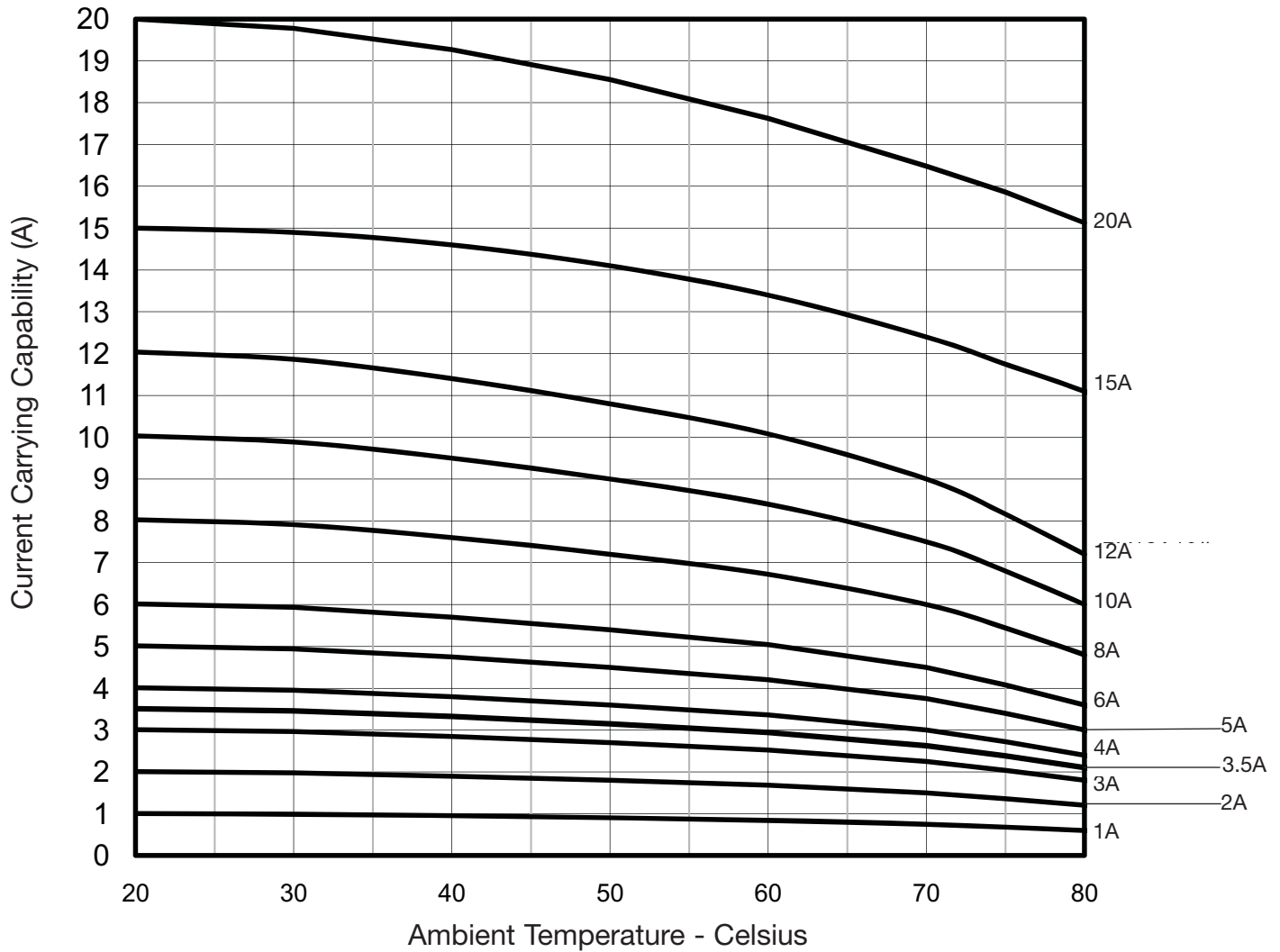


# Photovoltaic Fuse Links for Solar Panel Applications

## String Protection Fuse Links 1A to 20A 1000Vdc

### PV Series

Temperature Derating



The only controlled copy of this Data Sheet is the electronic read-only version located on the Cooper Bussmann Network Drive. All other copies of this document are by definition uncontrolled. This bulletin is intended to clearly present comprehensive product data and provide technical information that will help the end user with design applications. Cooper Bussmann reserves the right, without notice, to change design or construction of any products and to discontinue or limit distribution of any products. Cooper Bussmann also reserves the right to change or update, without notice, any technical information contained in this bulletin. Once a product has been selected, it should be tested by the user in all possible applications.