

# High Precision Power Splitter

## PS Series

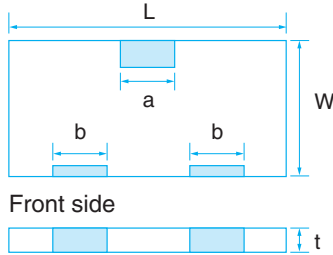


Power splitter with excellent high frequency characteristics for applications from DC~20GHz Bit error is restrained by keeping high frequency digital signal stable Offer standard type with ground and custom type designed to customer' specification.

RoHS compliant Completely lead free

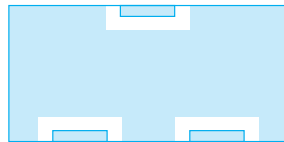
### SPECIFICATIONS

#### Mechanical



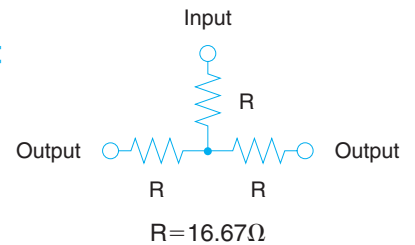
Dimension (Inch Size)	PS1608(G) (0603)	PS2012(G) (0805)	PS3216(G) (1206)	PS5025(G) (2010)
L	1.6±0.2	2.0±0.2	3.2±0.2	5.0±0.2
W	0.8±0.2	1.25±0.2	1.6±0.2	2.5±0.2
a	0.4±0.1	0.4±0.1	0.3±0.1	0.35±0.1
b	0.3±0.1	0.3±0.1	0.35±0.1	0.65±0.1
t	0.4±0.1	0.4±0.1	0.4±0.1	0.8±0.15

(unit : mm)



Back side No ground for custom type

#### Equivalent circuit



#### Electrical

Standard type

Type	PS1608G	PS2012G	PS3216G	PS5025G
Operating frequency	DC~20GHz	DC~17.5GHz	DC~15GHz	DC~10GHz
Insertion loss	6±0.5dB(DC~10GHz)	6±0.5dB(DC~10GHz)	6±0.5dB(DC~10GHz)	6±0.5dB(DC~7.5GHz)
	6±1.0dB(10GHz~20GHz)	6±1.0dB(10GHz~17.5GHz)	6±1.0dB(10GHz~15GHz)	6±1.0dB(7.5GHz~10GHz)
Split diviation	max.0.3dB			
VSWR	1.3(DC~10GHz)	1.3(DC~10GHz)	1.3(DC~10GHz)	1.3(DC~7.5GHz)
	1.5(10GHz~20GHz)	1.5(10GHz~17.5GHz)	1.5(10GHz~15GHz)	1.5(7.5GHz~10GHz)
Input power	100mW	125mW	250mW	500mW
Max overload power	200mW	250mW	500mW	1000mW
Operating temperature	-40~125°C			
Package	1,000·5,000pcs/reel			

\*Standard type with ground on back side can gain stable performance regardless of circuit characteristics

\*Custom type without ground on back side can be designed according to specific circuit

- Please ask as for chip custom type with demension of 1.0\*0.5mm
- Simplified pattern can be realized as ground is not required on the surface of circuit

### PART NUMBER

**PS 1608 G T2 - R50 - T1(T5)**

