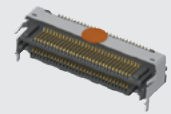


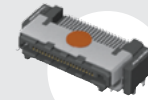
LSHM-150-01-L-DH-A-S-K-TR



LSHM-130-01-F-DH-A-S-K-TR



LSHM-120-01-L-DH-A-N-K-TR



LSHM-120-01-L-RH-A-S-K-TR

LSHM-DH, LSHM-RH SERIES

(0.50 mm) .0197"

HIGH-SPEED HERMAPHRODITIC STRIP

SPECIFICATIONS

For complete specifications and recommended PCB layouts see www.samtec.com?LSHM

- Insulator Material:** Black Liquid Crystal Polymer
- Contact Material:** Phosphor Bronze
- Plating:** Au or Sn over 50 μ" (1.27 μm) Ni
- Current Rating:** 1.9 A per pin (2 adjacent pins powered)
- Operating Temp Range:** -55 °C to +125 °C
- RoHS Compliant:** Yes

Board Mates:
LSHM

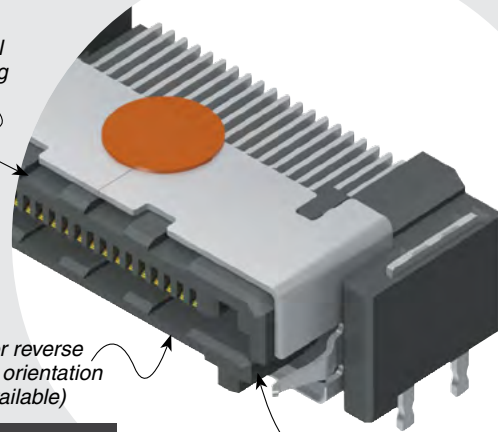
Cable Mates:
HLCD



- High retention contacts
- Audible click when mated
- Shrouded

Optional shielding

Standard or reverse right-angle orientation (vertical available)



Suitable for coplanar and perpendicular applications

Audible click when mated properly

PROCESSING

Lead-Free Solderable: Yes
SMT Lead Coplanarity: (0.10 mm) .004" max

HIGH-SPEED CHANNEL PERFORMANCE

LSHM-DH/LSHM-DH

Rating based on Samtec reference channel. For full SI performance data visit Samtec.com or contact SIG@samtec.com

19
Gbps

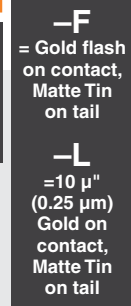
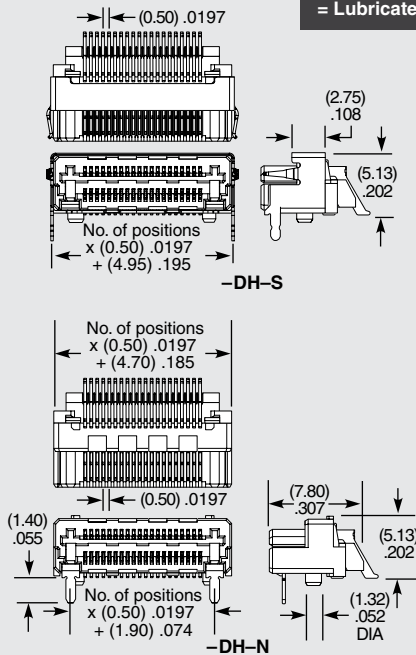
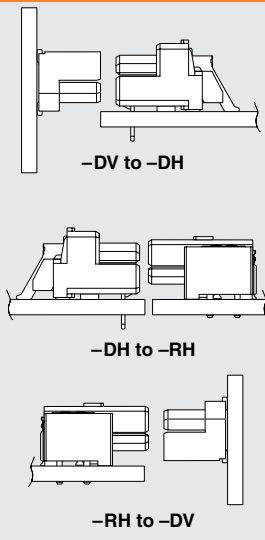
RECOGNITIONS

For complete scope of recognitions see www.samtec.com/quality

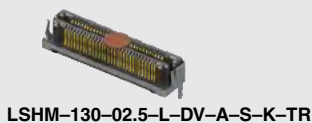


LSHM	1	NO. PINS PER ROW	LEAD STYLE	PLATING OPTION	TAIL OPTION	A	SHIELD OPTION	K	TR
		05, 10, 20, 30, 40, 50	-01 = Standard -L1 = Lubricated	-F = Gold flash on contact, Matte Tin on tail -L = 10 μ" (0.25 μm) Gold on contact, Matte Tin on tail	-DH = Right-angle -RH = Reverse Right-angle		-S = With Shield -N = Without Shield	-K = (3.50 mm) .138" DIA Polyimide film Pick & Place Pad	-TR = Tape & Reel

APPLICATION



Note: Some lengths, styles and options are non-standard, non-returnable.



LSHM-150-02.5-L-DV-A-N-K-TR

LSHM-DV SERIES

(0.50 mm) .0197"

HIGH-SPEED HERMAPHRODITIC STRIP

SPECIFICATIONS

For complete specifications and recommended PCB layouts see www.samtec.com?LSHM

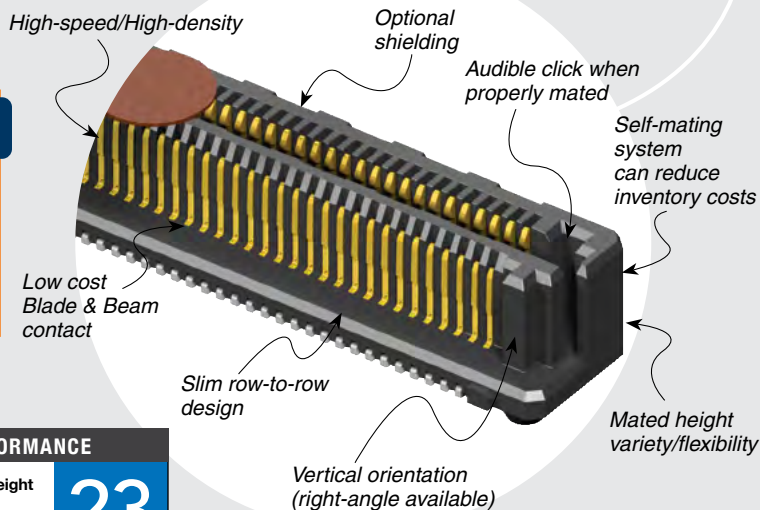
Insulator Material:
Black Liquid Crystal Polymer
Contact Material:
Phosphor Bronze
Plating:
Au or Sn over
50 μ" (1.27 μm) Ni
Current Rating:
2.0 A per pin
(2 adjacent pins powered)
Operating Temp Range:
-55 °C to +125 °C
RoHS Compliant:
Yes

Board Mates:
LSHM

Cable Mates:
HLCD

RUGGEDIZED
BY SAMTEC

- High retention contacts
- Audible click when mated
- Shrouded



PROCESSING

Lead-Free Solderable:
Yes
SMT Lead Coplanarity:
(0.10 mm) .004" max
Board Stacking:
For applications requiring more than two connectors per board, contact ipg@samtec.com

HIGH-SPEED CHANNEL PERFORMANCE

LSHM-DV/LSHM-DV @ 5 mm Mated Stack Height

Rating based on Samtec reference channel.
For full SI performance data visit Samtec.com
or contact SIG@samtec.com

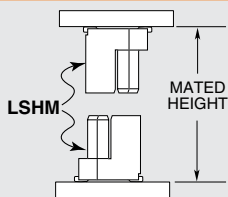
23
G b p s

RECOGNITIONS

For complete scope of recognitions see www.samtec.com/quality



APPLICATION



LEAD STYLE	MATED HEIGHT*
-02.5 & -02.5	(5.00) .196
-02.5 & -03.0	(5.50) .217
-03.0 & -03.0	(6.00) .236
-02.5 & -04.0	(6.50) .256
-03.0 & -04.0	(7.00) .276
-04.0 & -04.0	(8.00) .315
-02.5 & -06.0	(8.50) .335
-03.0 & -06.0	(9.00) .354
-04.0 & -06.0	(10.00) .394
-06.0 & -06.0	(12.00) .472

*Processing conditions will affect mated height.

LSHM - **1** NO. PINS PER ROW

05, 10, 20, 30, 40, 50

LEAD STYLE

Specify LEAD STYLE from chart

PLATING OPTION

-F = Gold flash on contact, Matte Tin on tail
-L = 10 μ" (0.25 μm) Gold on contact, Matte Tin on tail

TAIL OPTION

-DV = Vertical

SHIELD OPTION

-S = With Shield
-N = Without Shield

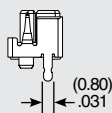
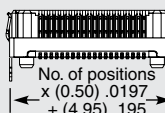
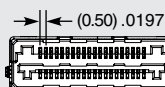
K

= (3.50 mm) .138" DIA Polyimide film Pick & Place Pad

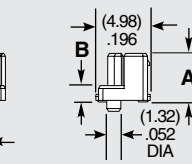
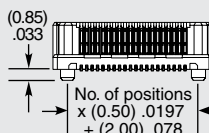
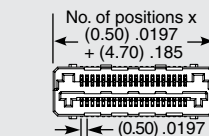
TR

= Tape & Reel

LEAD STYLE (STANDARD)	LEAD STYLE (LUBRICATED)	A	B
-02.5	-L2.5	(3.95) .156	(1.00) .039
-03.0	-L3.0	(4.45) .175	(1.50) .059
-04.0	-L4.0	(5.45) .215	(2.50) .098
-06.0	-L6.0	(7.45) .293	(4.50) .177



-DV-S



-DV-N

Note: Some lengths, styles and options are non-standard, non-returnable.