

# LM2677

## SIMPLE SWITCHER® High Efficiency 5A Step-Down Voltage Regulator with Sync

### General Description

The LM2677 series of regulators are monolithic integrated circuits which provide all of the active functions for a step-down (buck) switching regulator capable of driving up to 5A loads with excellent line and load regulation characteristics. High efficiency (>90%) is obtained through the use of a low ON-resistance DMOS power switch. The series consists of fixed output voltages of 3.3V, 5V and 12V and an adjustable output version.

The SIMPLE SWITCHER® concept provides for a complete design using a minimum number of external components. The switching clock frequency can be provided by an internal fixed frequency oscillator (260KHz) or from an externally provided clock in the range of 280KHz to 400KHz which allows the use of physically smaller sized components. A family of standard inductors for use with the LM2677 are available from several manufacturers to greatly simplify the design process. The external Sync clock provides direct and precise control of the output ripple frequency for consistent filtering or frequency spectrum positioning.

The LM2677 series also has built in thermal shutdown, current limiting and an ON/OFF control input that can power down the regulator to a low 50µA quiescent current standby condition. The output voltage is guaranteed to a ±2% tolerance.

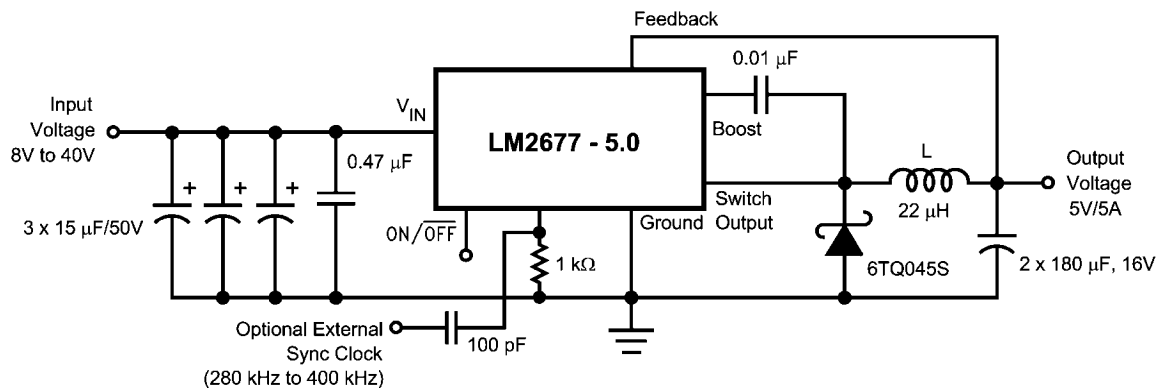
### Features

- Efficiency up to 92%
- Simple and easy to design with (using off-the-shelf external components)
- 100 mΩ DMOS output switch
- 3.3V, 5V and 12V fixed output and adjustable (1.2V to 37V ) versions
- 50µA standby current when switched OFF
- ±2% maximum output tolerance over full line and load conditions
- Wide input voltage range: 8V to 40V
- External Sync clock capability (280KHz to 400KHz)
- 260 KHz fixed frequency internal oscillator
- -40 to +125°C operating junction temperature range

### Applications

- Simple to design, high efficiency (>90%) step-down switching regulators
- Efficient system pre-regulator for linear voltage regulators
- Battery chargers
- Communications and radio equipment regulator with synchronized clock frequency

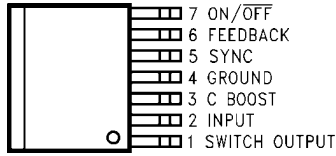
### Typical Application



10130103

# Connection Diagrams and Ordering Information

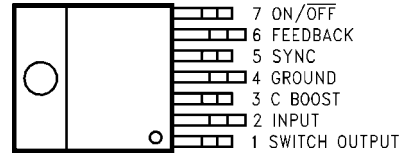
**TO-263 Package  
Top View**



10130101

**Order Number**  
**LM2677S-3.3, LM2677S-5.0,**  
**LM2677S-12 or LM2677S-ADJ**  
 See NSC Package Number TS7B

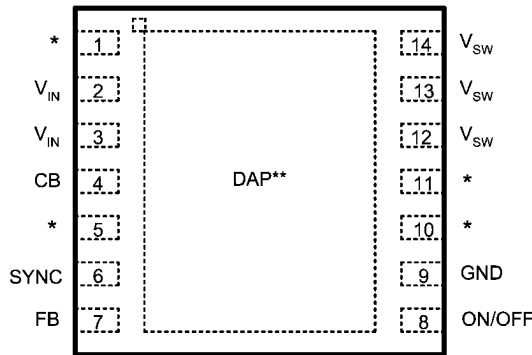
**TO-220 Package  
Top View**



10130102

**Order Number**  
**LM2677T-3.3, LM2677T-5.0,**  
**LM2677T-12 or LM2677T-ADJ**  
 See NSC Package Number TA07B

**Top View**



\* No Connections

\*\* Connect to Pin 9 on PCB

10130141

**LLP-14**  
 See NS package Number SRC14A

## Ordering Information for LLP Package

| Output Voltage | Order Information | Package Marking | Supplied As                 |
|----------------|-------------------|-----------------|-----------------------------|
| 12             | LM2677SD-12       | S0002XB         | 250 Units on Tape and Reel  |
| 12             | LM2677SDX-12      | S0002XB         | 2500 Units on Tape and Reel |
| 3.3            | LM2677SD-3.3      | S0002YB         | 250 Units on Tape and Reel  |
| 3.3            | LM2677SDX-3.3     | S0002YB         | 2500 Units on Tape and Reel |
| 5.0            | LM2677SD-5.0      | S0002ZB         | 250 Units on Tape and Reel  |
| 5.0            | LM2677SDX-5.0     | S0002ZB         | 2500 Units on Tape and Reel |
| ADJ            | LM2677SD-ADJ      | S0003AB         | 250 Units on Tape and Reel  |
| ADJ            | LM2677SDX-ADJ     | S0003AB         | 2500 Units on Tape and Reel |

**Absolute Maximum Ratings** (Note 1)

If Military/Aerospace specified devices are required, please contact the Texas Instruments Sales Office/Distributors for availability and specifications.

|                                    |                    |
|------------------------------------|--------------------|
| Input Supply Voltage               | 45V                |
| ON/OFF Pin Voltage                 | -0.1V to 6V        |
| Switch Voltage to Ground (Note 12) | -1V to $V_{IN}$    |
| Boost Pin Voltage                  | $V_{SW} + 8V$      |
| Feedback Pin Voltage               | -0.3V to 14V       |
| Power Dissipation                  | Internally Limited |

|                           |                |
|---------------------------|----------------|
| ESD (Note 2)              | 2 kV           |
| Storage Temperature Range | -65°C to 150°C |
| Soldering Temperature     |                |
| Wave                      | 4 sec, 260°C   |
| Infrared                  | 10 sec, 240°C  |
| Vapor Phase               | 75 sec, 219°C  |

**Operating Ratings**

|                                      |                |
|--------------------------------------|----------------|
| Supply Voltage                       | 8V to 40V      |
| Junction Temperature Range ( $T_J$ ) | -40°C to 125°C |

**Electrical Characteristics** Limits appearing in **bold type face** apply over the entire junction temperature range of operation, -40°C to 125°C. Specifications appearing in normal type apply for  $T_A = T_J = 25^\circ\text{C}$ . Sync pin open circuited.

**LM2677-3.3**

| Symbol    | Parameter      | Conditions  | Typical<br>(Note 3) | Min<br>(Note 4)     | Max<br>(Note 4)     | Units |
|-----------|----------------|---|---------------------|---------------------|---------------------|-------|
| $V_{OUT}$ | Output Voltage | $V_{IN} = 8V$ to 40V, $100\text{mA} \leq I_{OUT} \leq 5A$ | 3.3                 | 3.234/ <b>3.201</b> | 3.366/ <b>3.399</b> | V     |
| $\eta$    | Efficiency     | $V_{IN} = 12V$ , $I_{LOAD} = 5A$                          | 82                  |                     |                     | %     |

**LM2677-5.0**

| Symbol    | Parameter      | Conditions  | Typical<br>(Note 3) | Min<br>(Note 4)     | Max<br>(Note 4)     | Units |
|-----------|----------------|---|---------------------|---------------------|---------------------|-------|
| $V_{OUT}$ | Output Voltage | $V_{IN} = 8V$ to 40V, $100\text{mA} \leq I_{OUT} \leq 5A$ | 5.0                 | 4.900/ <b>4.850</b> | 5.100/ <b>5.150</b> | V     |
| $\eta$    | Efficiency     | $V_{IN} = 12V$ , $I_{LOAD} = 5A$                          | 84                  |                     |                     | %     |

**LM2677-12**

| Symbol    | Parameter      | Conditions   | Typical<br>(Note 3) | Min<br>(Note 4)     | Max<br>(Note 4)     | Units |
|-----------|----------------|--|---------------------|---------------------|---------------------|-------|
| $V_{OUT}$ | Output Voltage | $V_{IN} = 15V$ to 40V, $100\text{mA} \leq I_{OUT} \leq 5A$ | 12                  | 11.76/ <b>11.64</b> | 12.24/ <b>12.36</b> | V     |
| $\eta$    | Efficiency     | $V_{IN} = 24V$ , $I_{LOAD} = 5A$                           | 92                  |                     |                     | %     |

**LM2677-ADJ**

| Symbol   | Parameter        | Conditions   | Typ<br>(Note 3) | Min<br>(Note 4)     | Max<br>(Note 4)     | Units |
|----------|------------------|--|-----------------|---------------------|---------------------|-------|
| $V_{FB}$ | Feedback Voltage | $V_{IN} = 8V$ to 40V, $100\text{mA} \leq I_{OUT} \leq 5A$<br>$V_{OUT}$ Programmed for 5V | 1.21            | 1.186/ <b>1.174</b> | 1.234/ <b>1.246</b> | V     |
| $\eta$   | Efficiency       | $V_{IN} = 12V$ , $I_{LOAD} = 5A$   | 84              |                     |                     | %     |

## All Output Voltage Versions

### Electrical Characteristics

Limits appearing in **bold type face** apply over the entire junction temperature range of operation,  $-40^{\circ}\text{C}$  to  $125^{\circ}\text{C}$ .

Specifications appearing in normal type apply for  $T_A = T_J = 25^{\circ}\text{C}$ . Unless otherwise specified  $V_{IN}=12\text{V}$  for the 3.3V, 5V and Adjustable versions and  $V_{IN}=24\text{V}$  for the 12V version, Sync pin open circuited..

| Symbol                   | Parameter                 | Conditions  | Typ  | Min      | Max        | Units                |                      |
|--------------------------|---------------------------|---|------|----------|------------|----------------------|----------------------|
| <b>DEVICE PARAMETERS</b> |                           |   |      |          |            |                      |                      |
| $I_Q$                    | Quiescent Current         | $V_{FEEDBACK} = 8\text{V}$<br>For 3.3V, 5.0V, and ADJ Versions<br>$V_{FEEDBACK} = 15\text{V}$<br>For 12V Versions | 4.2  |          | 6          | mA                   |                      |
| $I_{STBY}$               | Standby Quiescent Current | ON/OFF Pin = 0V   | 50   |          | 100/150    | $\mu\text{A}$        |                      |
| $I_{CL}$                 | Current Limit             |   | 7    | 6.1/5.75 | 8.3/8.75   | A                    |                      |
| $I_L$                    | Output Leakage Current    | $V_{IN} = 40\text{V}$ , ON/OFF Pin = 0V<br>$V_{SWITCH} = 0\text{V}$   | 1    |          | 200        | $\mu\text{A}$        |                      |
|                          |                           | $V_{SWITCH} = -1\text{V}$   | 6    |          | 15         | mA                   |                      |
| $R_{DS(ON)}$             | Switch On-Resistance      | $I_{SWITCH} = 5\text{A}$  | 0.12 |          | 0.14/0.225 | $\Omega$             |                      |
| $f_O$                    | Oscillator Frequency      | Measured at Switch Pin  | 260  | 225      | 280        | kHz                  |                      |
| D                        | Duty Cycle                | Maximum Duty Cycle  | 91   |          |            | %                    |                      |
|                          |                           | Minimum Duty Cycle  | 0    |          |            | %                    |                      |
| $I_{BIAS}$               | Feedback Bias Current     | $V_{FEEDBACK} = 1.3\text{V}$<br>ADJ Version Only  | 85   |          |            | nA                   |                      |
| $V_{ON/OFF}$             | ON/OFF Threshold Voltage  |   | 1.4  | 0.8      | 2.0        | V                    |                      |
| $I_{ON/OFF}$             | ON/OFF Input Current      | ON/OFF Input = 0V   | 20   |          | 45         | $\mu\text{A}$        |                      |
| $F_{SYNC}$               | Synchronization Frequency | $V_{SYNC}(\text{Pin } 5)=3.5\text{V}$ , 50% Duty Cycle  | 400  |          |            | KHz                  |                      |
| $V_{SYNC}$               | SYNC Threshold Voltage    |   | 1.4  |          |            | V                    |                      |
| $\theta_{JA}$            | Thermal Resistance        | T Package, Junction to Ambient<br>(Note 5)  | 65   |          |            | $^{\circ}\text{C/W}$ |                      |
| $\theta_{JA}$            |                           | T Package, Junction to Ambient<br>(Note 6)  | 45   |          |            |                      |                      |
| $\theta_{JC}$            |                           | T Package, Junction to Case   | 2    |          |            |                      |                      |
| $\theta_{JA}$            |                           | S Package, Junction to Ambient<br>(Note 7)  | 56   |          |            |                      |                      |
| $\theta_{JA}$            |                           | S Package, Junction to Ambient<br>(Note 8)  | 35   |          |            |                      |                      |
| $\theta_{JA}$            |                           | S Package, Junction to Ambient<br>(Note 9)  | 26   |          |            |                      |                      |
| $\theta_{JC}$            |                           | S Package, Junction to Case   | 2    |          |            |                      |                      |
| $\theta_{JA}$            |                           | SD Package, Junction to Ambient<br>(Note 10)  | 55   |          |            |                      |                      |
| $\theta_{JA}$            |                           | SD Package, Junction to Ambient<br>(Note 11)  | 29   |          |            |                      |                      |
|                          |                           |   |      |          |            |                      | ++                   |
|                          |                           |   |      |          |            |                      | $^{\circ}\text{C/W}$ |

**Note 1:** Absolute Maximum Ratings are limits beyond which damage to the device may occur. Operating Ratings indicate conditions under which of the device is guaranteed. Operating Ratings do not imply guaranteed performance limits. For guaranteed performance limits and associated test condition, see the electrical Characteristics tables.

**Note 2:** ESD was applied using the human-body model, a 100pF capacitor discharged through a 1.5 k $\Omega$  resistor into each pin.

**Note 3:** Typical values are determined with  $T_A = T_J = 25^\circ\text{C}$  and represent the most likely norm.

**Note 4:** All limits are guaranteed at room temperature (standard type face) and at **temperature extremes (bold type face)**. All room temperature limits are 100% tested during production with  $T_A = T_J = 25^\circ\text{C}$ . All limits at temperature extremes are guaranteed via correlation using standard standard Quality Control (SQC) methods. All limits are used to calculate Average Outgoing Quality Level (AOQL).

**Note 5:** Junction to ambient thermal resistance (no external heat sink) for the 7 lead TO-220 package mounted vertically, with ½ inch leads in a socket, or on a PC board with minimum copper area.

**Note 6:** Junction to ambient thermal resistance (no external heat sink) for the 7 lead TO-220 package mounted vertically, with ½ inch leads soldered to a PC board containing approximately 4 square inches of (1 oz.) copper area surrounding the leads.

**Note 7:** Junction to ambient thermal resistance for the 7 lead TO-263 mounted horizontally against a PC board area of 0.136 square inches (the same size as the TO-263 package) of 1 oz. (0.0014 in. thick) copper.

**Note 8:** Junction to ambient thermal resistance for the 7 lead TO-263 mounted horizontally against a PC board area of 0.4896 square inches (3.6 times the area of the TO-263 package) of 1 oz. (0.0014 in. thick) copper.

**Note 9:** Junction to ambient thermal resistance for the 7 lead TO-263 mounted horizontally against a PC board copper area of 1.0064 square inches (7.4 times the area of the TO-263 package) of 1 oz. (0.0014 in. thick) copper. Additional copper area will reduce thermal resistance further. See the thermal model in Switchers Made Simple® software.

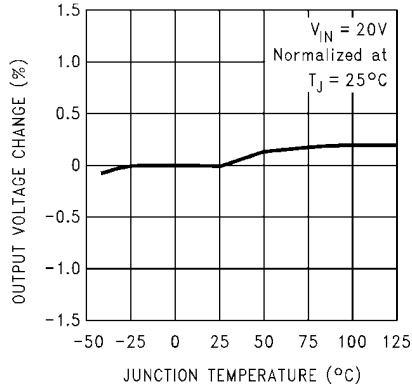
**Note 10:** Junction to ambient thermal resistance for the 14-lead LLP mounted on a PC board copper area equal to the die attach paddle.

**Note 11:** Junction to ambient thermal resistance for the 14-lead LLP mounted on a PC board copper area using 12 vias to a second layer of copper equal to die attach paddle. Additional copper area will reduce thermal resistance further. For layout recommendations, refer to Application Note AN-1187.

**Note 12:** The absolute maximum specification of the 'Switch Voltage to Ground' applies to DC voltage. An extended negative voltage limit of -10V applies to a pulse of up to 20 ns, -6V of 60 ns and -3V of up to 100 ns.

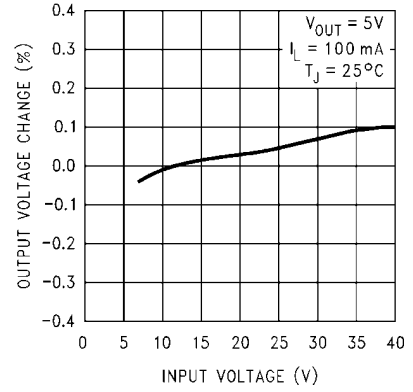
# Typical Performance Characteristics

**Normalized Output Voltage**



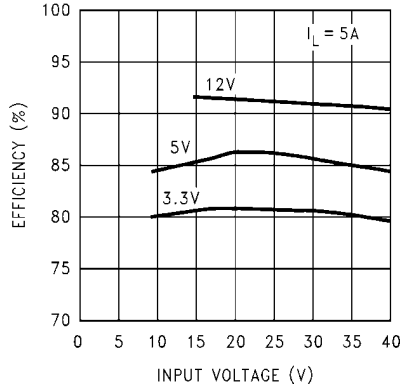
10130109

**Line Regulation**



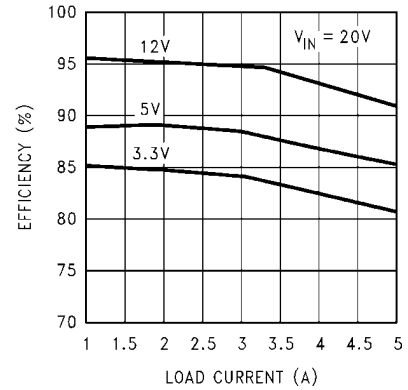
10130110

**Efficiency vs Input Voltage**



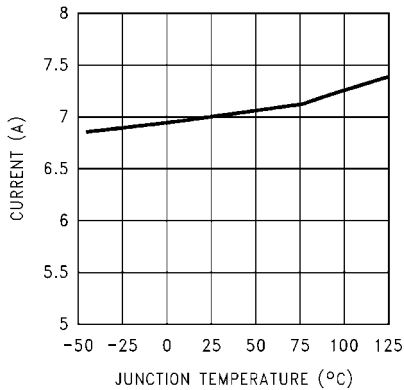
10130111

**Efficiency vs I\_LOAD**



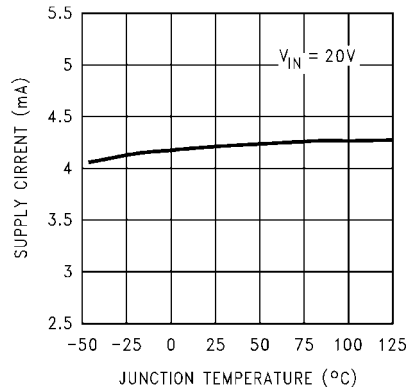
10130112

**Switch Current Limit**

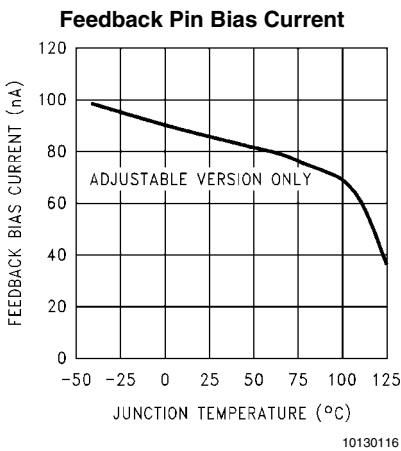
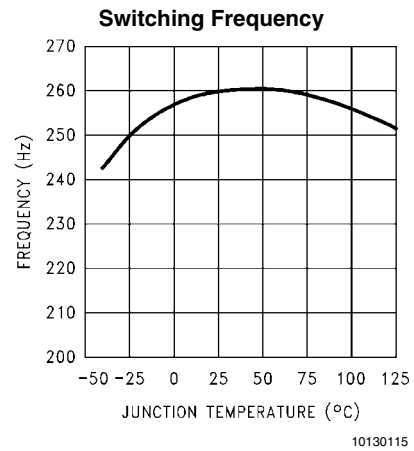
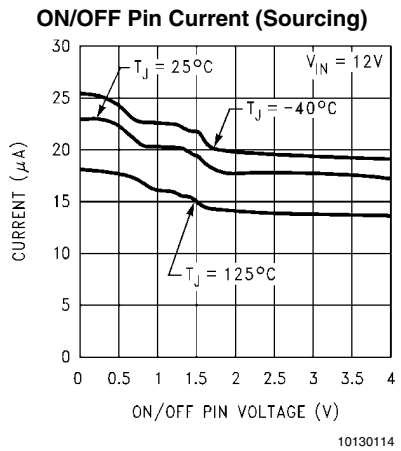
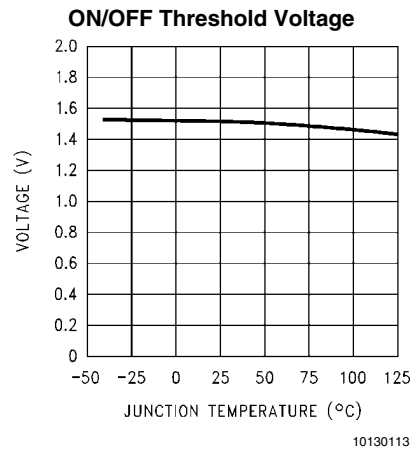
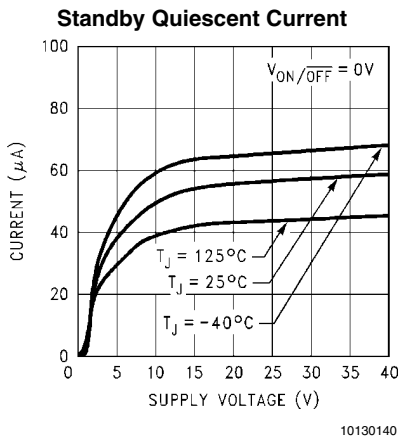


10130104

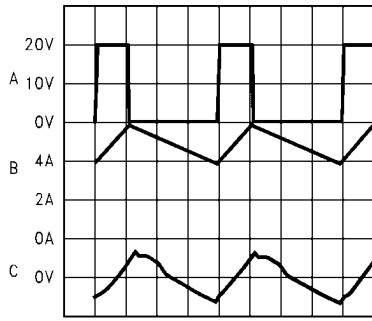
**Operating Quiescent Current**



10130105



**Continuous Mode Switching Waveforms**  
 $V_{IN} = 20V, V_{OUT} = 5V, I_{LOAD} = 5A$   
 $L = 10 \mu H, C_{OUT} = 400 \mu F, C_{OUT}ESR = 13 m\Omega$



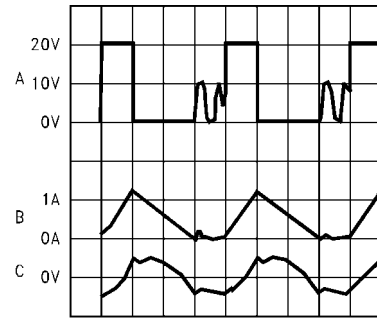
1  $\mu$ sec/Div

10130117

- A:  $V_{SW}$  Pin Voltage, 10 V/div.
- B: Inductor Current, 2 A/div
- C: Output Ripple Voltage, 20 mV/div AC-Coupled

**Horizontal Time Base: 1  $\mu$ s/div**

**Discontinuous Mode Switching Waveforms**  
 $V_{IN} = 20V, V_{OUT} = 5V, I_{LOAD} = 500 mA$   
 $L = 10 \mu H, C_{OUT} = 400 \mu F, C_{OUT}ESR = 13 m\Omega$



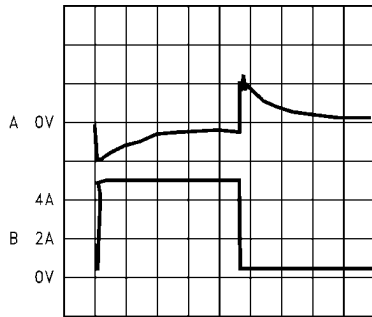
1  $\mu$ sec/Div

10130118

- A:  $V_{SW}$  Pin Voltage, 10 V/div.
- B: Inductor Current, 1 A/div
- C: Output Ripple Voltage, 20 mV/div AC-Coupled

**Horizontal Time Base: 1  $\mu$ s/div**

**Load Transient Response for Continuous Mode**  
 $V_{IN} = 20V, V_{OUT} = 5V$   
 $L = 10 \mu H, C_{OUT} = 400 \mu F, C_{OUT}ESR = 13 m\Omega$



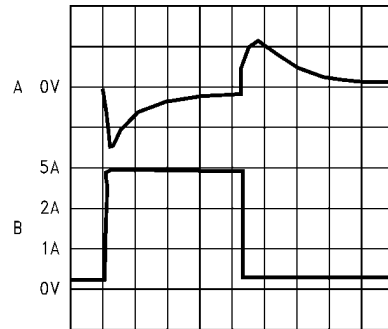
100  $\mu$ sec/Div

10130119

- A: Output Voltage, 100 mV/div, AC-Coupled.
- B: Load Current: 500 mA to 5A Load Pulse

**Horizontal Time Base: 100  $\mu$ s/div**

**Load Transient Response for Discontinuous Mode**  
 $V_{IN} = 20V, V_{OUT} = 5V,$   
 $L = 10 \mu H, C_{OUT} = 400 \mu F, C_{OUT}ESR = 13 m\Omega$



200  $\mu$ sec/Div

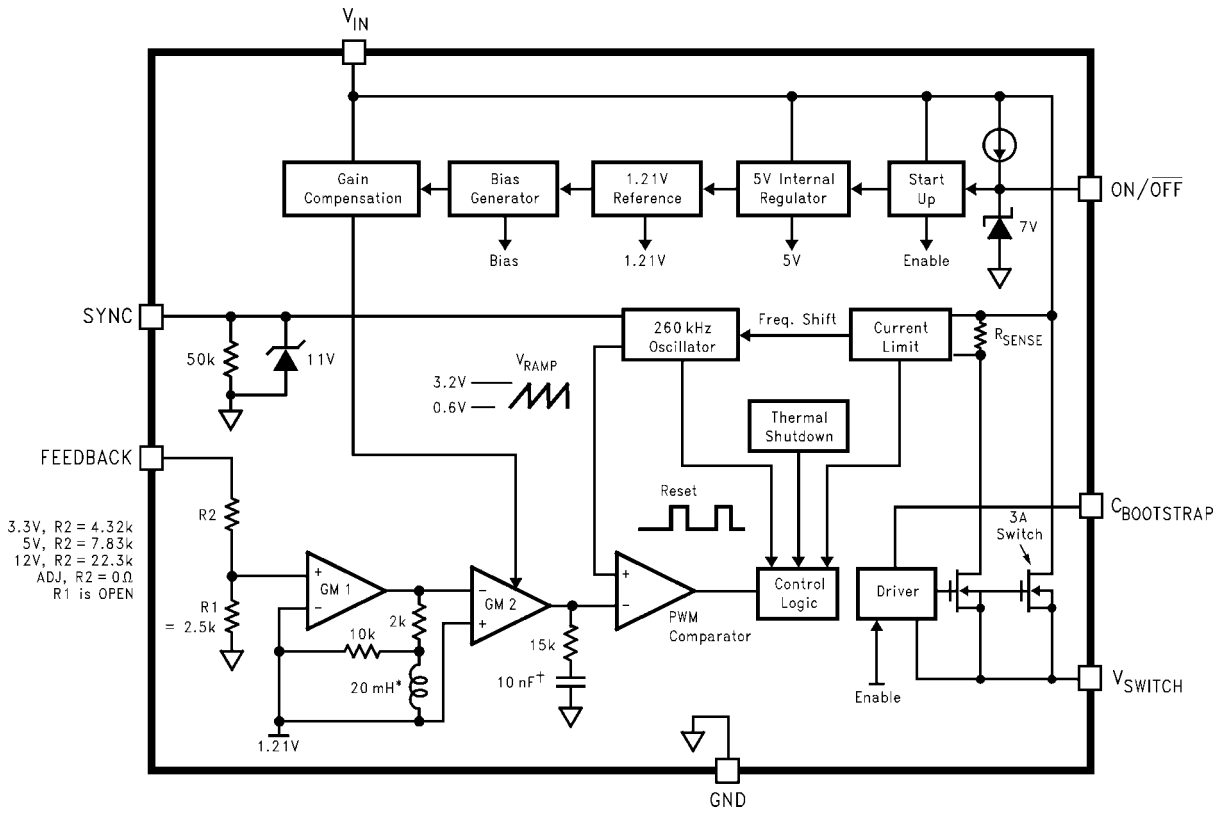
10130120

- A: Output Voltage, 100 mV/div, AC-Coupled.
- B: Load Current: 200 mA to 5A Load Pulse

**Horizontal Time Base: 200  $\mu$ s/div**



# Block Diagram



\* Active Inductor Patent Number 5,514,947  
 † Active Capacitor Patent Number 5,382,918

10130106

## Application Hints

The LM2677 provides all of the active functions required for a step-down (buck) switching regulator. The internal power switch is a DMOS power MOSFET to provide power supply designs with high current capability, up to 5A, and highly efficient operation.

The LM2677 is part of the SIMPLE SWITCHER family of power converters. A complete design uses a minimum number of external components, which have been pre-determined from a variety of manufacturers. Using either this data sheet or a design software program called *Switchers Made Simple* a complete switching power supply can be designed quickly. The software is provided free of charge and can be downloaded from National Semiconductor's Internet site located at <http://www.national.com>.

### SWITCH OUTPUT

This is the output of a power MOSFET switch connected directly to the input voltage. The switch provides energy to an inductor, an output capacitor and the load circuitry under control of an internal pulse-width-modulator (PWM). The PWM controller is internally clocked by a fixed 260KHz oscillator. In a standard step-down application the duty cycle (Time ON/Time OFF) of the power switch is proportional to the ratio of the power supply output voltage to the input voltage. The voltage on pin 1 switches between  $V_{in}$  (switch ON) and below ground by the voltage drop of the external Schottky diode (switch OFF).

### INPUT

The input voltage for the power supply is connected to pin 2. In addition to providing energy to the load the input voltage also provides bias for the internal circuitry of the LM2677. For guaranteed performance the input voltage must be in the range of 8V to 40V. For best performance of the power supply the input pin should always be bypassed with an input capacitor located close to pin 2.

### C BOOST

A capacitor must be connected from pin 3 to the switch output, pin 1. This capacitor boosts the gate drive to the internal MOSFET above  $V_{in}$  to fully turn it ON. This minimizes conduction losses in the power switch to maintain high efficiency. The recommended value for C Boost is 0.01 $\mu$ F.

### GROUND

This is the ground reference connection for all components in the power supply. In fast-switching, high-current applications such as those implemented with the LM2677, it is recommended that a broad ground plane be used to minimize signal coupling throughout the circuit

### SYNC

This input allows control of the switching clock frequency. If left open-circuited the regulator will be switched at the internal

oscillator frequency, between 225KHz and 280KHz. An external clock can be used to force the switching frequency and thereby control the output ripple frequency of the regulator. This capability provides for consistent filtering of the output ripple from system to system as well as precise frequency spectrum positioning of the ripple frequency which is often desired in communications and radio applications. This external frequency must be greater than the LM2677 internal oscillator frequency, which could be as high as 280KHz, to prevent an erroneous reset of the internal ramp oscillator and PWM control of the power switch. The ramp oscillator is reset on the positive going edge of the sync input signal. It is recommended that the external TTL or CMOS compatible clock (between 0V and a level greater than 3V) be ac coupled to the sync input through a 100pf capacitor and a 1K $\Omega$  resistor to ground at pin 5 as shown in [Figure 1](#).

When the SYNC function is used, current limit frequency fold-back is not active. Therefore, the device may not be fully protected against extreme output short circuit conditions. See Additional Application Information.

### FEEDBACK

This is the input to a two-stage high gain amplifier, which drives the PWM controller. It is necessary to connect pin 6 to the actual output of the power supply to set the dc output voltage. For the fixed output devices (3.3V, 5V and 12V outputs), a direct wire connection to the output is all that is required as internal gain setting resistors are provided inside the LM2677. For the adjustable output version two external resistors are required to set the dc output voltage. For stable operation of the power supply it is important to prevent coupling of any inductor flux to the feedback input.

### ON/OFF

This input provides an electrical ON/OFF control of the power supply. Connecting this pin to ground or to any voltage less than 0.8V will completely turn OFF the regulator. The current drain from the input supply when OFF is only 50 $\mu$ A. Pin 7 has an internal pull-up current source of approximately 20 $\mu$ A and a protection clamp zener diode of 7V to ground. When electrically driving the ON/OFF pin the high voltage level for the ON condition should not exceed the 6V absolute maximum limit. When ON/OFF control is not required pin 7 should be left open circuited.

### DAP (LLP PACKAGE)

The Die Attach Pad (DAP) can and should be connected to PCB Ground plane/island. For CAD and assembly guidelines refer to Application Note AN-1187 at <http://power.national.com>.

## DESIGN CONSIDERATIONS

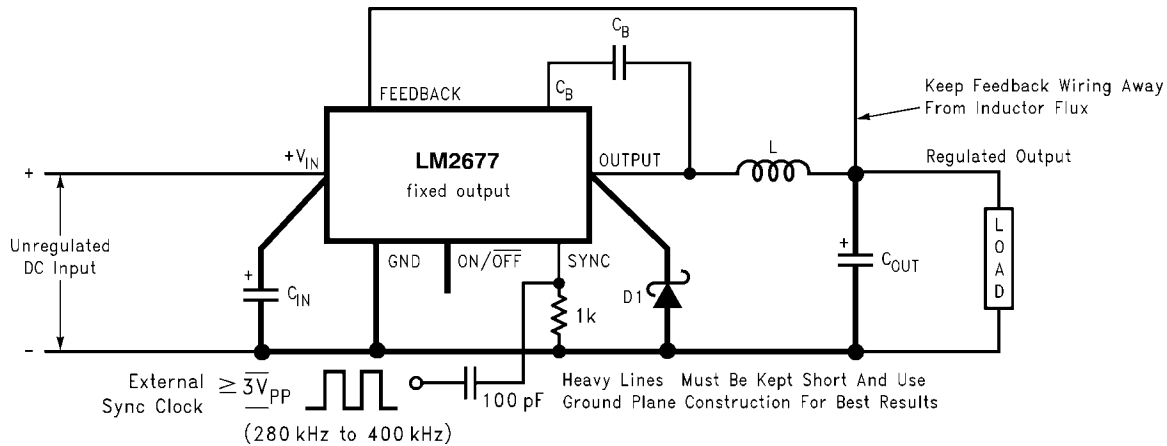


FIGURE 1. Basic circuit for fixed output voltage applications.

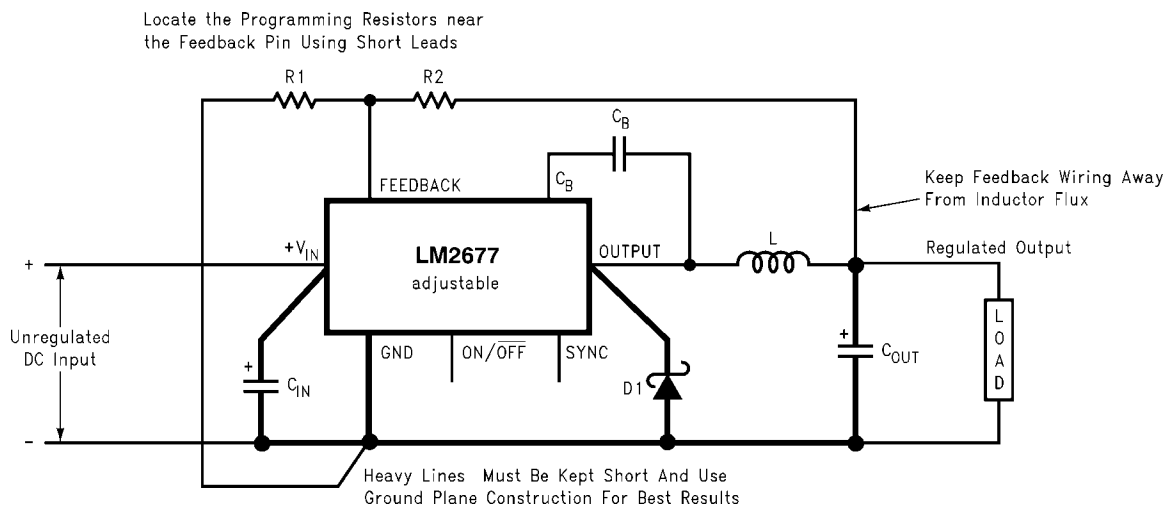


FIGURE 2. Basic circuit for adjustable output voltage applications

Power supply design using the LM2677 is greatly simplified by using recommended external components. A wide range of inductors, capacitors and Schottky diodes from several manufacturers have been evaluated for use in designs that cover the full range of capabilities (input voltage, output voltage and load current) of the LM2677. A simple design procedure using nomographs and component tables provided in this data sheet leads to a working design with very little effort. Alternatively, the design software, **LM267X Made Simple** (version 6.0), can also be used to provide instant component selection, circuit performance calculations for evaluation, a bill of materials component list and a circuit schematic.

**INDUCTOR**

The inductor is the key component in a switching regulator. For efficiency the inductor stores energy during the switch ON time and then transfers energy to the load while the switch is OFF.

Nomographs are used to select the inductance value required for a given set of operating conditions. The nomographs as-

The individual components from the various manufacturers called out for use are still just a small sample of the vast array of components available in the industry. While these components are recommended, they are not exclusively the only components for use in a design. After a close comparison of component specifications, equivalent devices from other manufacturers could be substituted for use in an application.

Important considerations for each external component and an explanation of how the nomographs and selection tables were developed follows.

sume that the circuit is operating in continuous mode (the current flowing through the inductor never falls to zero). The magnitude of inductance is selected to maintain a maximum ripple current of 30% of the maximum load current. If the ripple current exceeds this 30% limit the next larger value is selected.

The inductors offered have been specifically manufactured to provide proper operation under all operating conditions of input and output voltage and load current. Several part types are offered for a given amount of inductance. Both surface mount and through-hole devices are available. The inductors from each of the three manufacturers have unique characteristics.

Renco: ferrite stick core inductors; benefits are typically lowest cost and can withstand ripple and transient peak currents above the rated value. These inductors have an external magnetic field, which may generate EMI.

Pulse Engineering: powdered iron toroid core inductors; these also can withstand higher than rated currents and, being toroid inductors, will have low EMI.

Coilcraft: ferrite drum core inductors; these are the smallest physical size inductors and are available only as surface mount components. These inductors also generate EMI but less than stick inductors.

### OUTPUT CAPACITOR

The output capacitor acts to smooth the dc output voltage and also provides energy storage. Selection of an output capacitor, with an associated equivalent series resistance (ESR), impacts both the amount of output ripple voltage and stability of the control loop.

The output ripple voltage of the power supply is the product of the capacitor ESR and the inductor ripple current. The capacitor types recommended in the tables were selected for having low ESR ratings.

In addition, both surface mount tantalum capacitors and through-hole aluminum electrolytic capacitors are offered as solutions.

Impacting frequency stability of the overall control loop, the output capacitance, in conjunction with the inductor, creates a double pole inside the feedback loop. In addition the capacitance and the ESR value create a zero. These frequency response effects together with the internal frequency compensation circuitry of the LM2677 modify the gain and phase shift of the closed loop system.

As a general rule for stable switching regulator circuits it is desired to have the unity gain bandwidth of the circuit to be limited to no more than one-sixth of the controller switching frequency. With the fixed 260KHz switching frequency of the LM2677, the output capacitor is selected to provide a unity gain bandwidth of 40KHz maximum. Each recommended capacitor value has been chosen to achieve this result.

In some cases multiple capacitors are required either to reduce the ESR of the output capacitor, to minimize output ripple (a ripple voltage of 1% of  $V_{out}$  or less is the assumed performance condition), or to increase the output capacitance to reduce the closed loop unity gain bandwidth (to less than 40KHz). When parallel combinations of capacitors are required it has been assumed that each capacitor is the exact same part type.

The RMS current and working voltage (WV) ratings of the output capacitor are also important considerations. In a typical step-down switching regulator, the inductor ripple current (set to be no more than 30% of the maximum load current by the inductor selection) is the current that flows through the output capacitor. The capacitor RMS current rating must be greater than this ripple current. The voltage rating of the output capacitor should be greater than 1.3 times the maximum output voltage of the power supply. If operation of the system at elevated temperatures is required, the capacitor voltage rating may be de-rated to less than the nominal room temperature rating. Careful inspection of the manufacturer's

specification for de-rating of working voltage with temperature is important.

### INPUT CAPACITOR

Fast changing currents in high current switching regulators place a significant dynamic load on the unregulated power source. An input capacitor helps to provide additional current to the power supply as well as smooth out input voltage variations.

Like the output capacitor, the key specifications for the input capacitor are RMS current rating and working voltage. The RMS current flowing through the input capacitor is equal to one-half of the maximum dc load current so the capacitor should be rated to handle this. Paralleling multiple capacitors proportionally increases the current rating of the total capacitance. The voltage rating should also be selected to be 1.3 times the maximum input voltage. Depending on the unregulated input power source, under light load conditions the maximum input voltage could be significantly higher than normal operation and should be considered when selecting an input capacitor.

The input capacitor should be placed very close to the input pin of the LM2677. Due to relative high current operation with fast transient changes, the series inductance of input connecting wires or PCB traces can create ringing signals at the input terminal which could possibly propagate to the output or other parts of the circuitry. It may be necessary in some designs to add a small valued (0.1 $\mu$ F to 0.47 $\mu$ F) ceramic type capacitor in parallel with the input capacitor to prevent or minimize any ringing.

### CATCH DIODE

When the power switch in the LM2677 turns OFF, the current through the inductor continues to flow. The path for this current is through the diode connected between the switch output and ground. This forward biased diode clamps the switch output to a voltage less than ground. This negative voltage must be greater than  $-1V$  so a low voltage drop (particularly at high current levels) Schottky diode is recommended. Total efficiency of the entire power supply is significantly impacted by the power lost in the output catch diode. The average current through the catch diode is dependent on the switch duty cycle (D) and is equal to the load current times (1-D). Use of a diode rated for much higher current than is required by the actual application helps to minimize the voltage drop and power loss in the diode.

During the switch ON time the diode will be reversed biased by the input voltage. The reverse voltage rating of the diode should be at least 1.3 times greater than the maximum input voltage.

### BOOST CAPACITOR

The boost capacitor creates a voltage used to overdrive the gate of the internal power MOSFET. This improves efficiency by minimizing the on resistance of the switch and associated power loss. For all applications it is recommended to use a 0.01 $\mu$ F/50V ceramic capacitor.

### SYNC COMPONENTS

When synchronizing the LM2677 with an external clock it is recommended to connect the clock to pin 5 through a series 100pf capacitor and connect a 1K $\Omega$  resistor to ground from pin 5. This RC network creates a short 100nS pulse on each positive edge of the clock to reset the internal ramp oscillator. The reset time of the oscillator is approximately 300nS.

### ADDITIONAL APPLICATION INFORMATION

When the output voltage is greater than approximately 6V, and the duty cycle at minimum input voltage is greater than

approximately 50%, the designer should exercise caution in selection of the output filter components. When an application designed to these specific operating conditions is subjected to a current limit fault condition, it may be possible to observe a large hysteresis in the current limit. This can affect the output voltage of the device until the load current is reduced sufficiently to allow the current limit protection circuit to reset itself.

Under current limiting conditions, the LM267x is designed to respond in the following manner:

1. At the moment when the inductor current reaches the current limit threshold, the ON-pulse is immediately terminated. This happens for any application condition.
2. However, the current limit block is also designed to momentarily reduce the duty cycle to below 50% to avoid subharmonic oscillations, which could cause the inductor to saturate.
3. Thereafter, once the inductor current falls below the current limit threshold, there is a small relaxation time during which the duty cycle progressively rises back above 50% to the value required to achieve regulation.

If the output capacitance is sufficiently 'large', it may be possible that as the output tries to recover, the output capacitor charging current is large enough to repeatedly re-trigger the current limit circuit before the output has fully settled. This condition is exacerbated with higher output voltage settings because the energy requirement of the output capacitor varies as the square of the output voltage ( $\frac{1}{2}CV^2$ ), thus requiring an increased charging current.

A simple test to determine if this condition might exist for a suspect application is to apply a short circuit across the output of the converter, and then remove the shorted output condition. In an application with properly selected external components, the output will recover smoothly.

Practical values of external components that have been experimentally found to work well under these specific operating conditions are  $C_{OUT} = 47\mu\text{F}$ ,  $L = 22\mu\text{H}$ . It should be noted that even with these components, for a device's current limit of  $I_{CLIM}$ , the maximum load current under which the possibility of the large current limit hysteresis can be minimized is  $I_{CLIM}/2$ . For example, if the input is 24V and the set output voltage is 18V, then for a desired maximum current of 1.5A, the current limit of the chosen switcher must be confirmed to be at least 3A.

Under extreme over-current or short circuit conditions, the LM267X employs frequency foldback in addition to the current limit. If the cycle-by-cycle inductor current increases above the current limit threshold (due to short circuit or inductor saturation for example) the switching frequency will be automatically reduced to protect the IC. Frequency below 100 KHz is typical for an extreme short circuit condition.

#### SIMPLE DESIGN PROCEDURE

Using the nomographs and tables in this data sheet (or use the available design software at <http://www.national.com>) a complete step-down regulator can be designed in a few simple steps.

**Step 1:** Define the power supply operating conditions:

Required output voltage

Maximum DC input voltage

Maximum output load current

**Step 2:** Set the output voltage by selecting a fixed output LM2677 (3.3V, 5V or 12V applications) or determine the required feedback resistors for use with the adjustable LM2677 –ADJ

**Step 3:** Determine the inductor required by using one of the four nomographs, [Figure 3](#) through [Figure 6](#). Table 1 provides a specific manufacturer and part number for the inductor.

**Step 4:** Using Table 3 (fixed output voltage) or Table 6 (adjustable output voltage), determine the output capacitance required for stable operation. Table 2 provides the specific capacitor type from the manufacturer of choice.

**Step 5:** Determine an input capacitor from Table 4 for fixed output voltage applications. Use Table 2 to find the specific capacitor type. For adjustable output circuits select a capacitor from Table 2 with a sufficient working voltage (WV) rating greater than  $V_{in\ max}$ , and an rms current rating greater than one-half the maximum load current (2 or more capacitors in parallel may be required).

**Step 6:** Select a diode from Table 5. The current rating of the diode must be greater than  $I_{load\ max}$  and the Reverse Voltage rating must be greater than  $V_{in\ max}$ .

**Step 7:** Include a  $0.01\mu\text{F}/50\text{V}$  capacitor for  $C_{boost}$  in the design.

#### FIXED OUTPUT VOLTAGE DESIGN EXAMPLE

A system logic power supply bus of 3.3V is to be generated from a wall adapter which provides an unregulated DC voltage of 13V to 16V. The maximum load current is 2.5A. Through-hole components are preferred.

**Step 1:** Operating conditions are:

$V_{out} = 3.3\text{V}$

$V_{in\ max} = 16\text{V}$

$I_{load\ max} = 2.5\text{A}$

**Step 2:** Select an LM2677T-3.3. The output voltage will have a tolerance of

$\pm 2\%$  at room temperature and  $\pm 3\%$  over the full operating temperature range.

**Step 3:** Use the nomograph for the 3.3V device, [Figure 3](#). The intersection of the 16V horizontal line ( $V_{in\ max}$ ) and the 2.5A vertical line ( $I_{load\ max}$ ) indicates that L33, a  $22\mu\text{H}$  inductor, is required.

From Table 1, L33 in a through-hole component is available from Renco with part number RL-1283-22-43 or part number PE-53933 from Pulse Engineering.

**Step 4:** Use Table 3 to determine an output capacitor. With a 3.3V output and a  $22\mu\text{H}$  inductor there are four through-hole output capacitor solutions with the number of same type capacitors to be paralleled and an identifying capacitor code given. Table 2 provides the actual capacitor characteristics. Any of the following choices will work in the circuit:

1 x  $220\mu\text{F}/10\text{V}$  Sanyo OS-CON (code C5)

1 x  $1000\mu\text{F}/35\text{V}$  Sanyo MV-GX (code C10)

1 x  $2200\mu\text{F}/10\text{V}$  Nichicon PL (code C5)

1 x  $1000\mu\text{F}/35\text{V}$  Panasonic HFQ (code C7)

**Step 5:** Use Table 4 to select an input capacitor. With 3.3V output and  $22\mu\text{H}$  there are three through-hole solutions. These capacitors provide a sufficient voltage rating and an rms current rating greater than 1.25A ( $1/2 I_{load\ max}$ ). Again using Table 2 for specific component characteristics the following choices are suitable:

1 x  $1000\mu\text{F}/63\text{V}$  Sanyo MV-GX (code C14)

1 x  $820\mu\text{F}/63\text{V}$  Nichicon PL (code C24)

1 x  $560\mu\text{F}/50\text{V}$  Panasonic HFQ (code C13)

**Step 6:** From Table 5 a 3A Schottky diode must be selected. For through-hole components 20V rated diodes are sufficient and 2 part types are suitable:

1N5820

SR302

**Step 7:** A 0.01µF capacitor will be used for Cboost.

### ADJUSTABLE OUTPUT DESIGN EXAMPLE

In this example it is desired to convert the voltage from a two battery automotive power supply (voltage range of 20V to 28V, typical in large truck applications) to the 14.8VDC alternator supply typically used to power electronic equipment from single battery 12V vehicle systems. The load current required is 2A maximum. It is also desired to implement the power supply with all surface mount components.

**Step 1:** Operating conditions are:

V<sub>out</sub> = 14.8V

V<sub>in max</sub> = 28V

I<sub>load max</sub> = 2A

**Step 2:** Select an LM2677S-ADJ. To set the output voltage to 14.9V two resistors need to be chosen (R1 and R2 in [Figure 2](#)). For the adjustable device the output voltage is set by the following relationship:

$$V_{OUT} = V_{FB} \left( 1 + \frac{R_2}{R_1} \right)$$

Where V<sub>FB</sub> is the feedback voltage of typically 1.21V.

A recommended value to use for R1 is 1K. In this example then R2 is determined to be:

$$R_2 = R_1 \left( \frac{V_{OUT}}{V_{FB}} - 1 \right) = 1 \text{ k}\Omega \left( \frac{14.8\text{V}}{1.21\text{V}} - 1 \right)$$

R2 = 11.23KΩ

The closest standard 1% tolerance value to use is 11.3KΩ

This will set the nominal output voltage to 14.88V which is within 0.5% of the target value.

**Step 3:** To use the nomograph for the adjustable device, [Figure 6](#), requires a calculation of the inductor Volt•microsecond constant (E•T expressed in V•µs) from the following formula:

$$E \cdot T = (V_{IN(MAX)} - V_{OUT} - V_{SAT}) \cdot \frac{V_{OUT} + V_D}{V_{IN(MAX)} - V_{SAT} + V_D} \cdot \frac{1000}{260} (V \cdot \mu s)$$

where V<sub>SAT</sub> is the voltage drop across the internal power switch which is R<sub>ds(ON)</sub> times I<sub>load</sub>. In this example this would be typically 0.15Ω x 2A or 0.3V and V<sub>D</sub> is the voltage drop across the forward biased Schottky diode, typically 0.5V. The switching frequency of 260KHz is the nominal value to use to estimate the ON time of the switch during which energy is stored in the inductor.

For this example E•T is found to be:

$$E \cdot T = (28 - 14.8 - 0.3) \cdot \frac{14.8 + 0.5}{28 - 0.3 + 0.5} \cdot \frac{1000}{260} (V \cdot \mu s)$$

$$E \cdot T = (12.9\text{V}) \cdot \frac{15.3}{28.2} \cdot 3.85 (V \cdot \mu s) = 26.9 (V \cdot \mu s)$$

Using [Figure 6](#), the intersection of 27V•µs horizontally and the 2A vertical line (I<sub>load max</sub>) indicates that L38, a 68µH inductor, should be used.

From Table 1, L38 in a surface mount component is available from Pulse Engineering with part number PE-54038S.

**Step 4:** Use Table 6 to determine an output capacitor. With a 14.8V output the 12.5 to 15V row is used and with a 68µH inductor there are three surface mount output capacitor solutions. Table 2 provides the actual capacitor characteristics based on the C Code number. Any of the following choices can be used:

1 x 33µF/20V AVX TPS (code C6)

1 x 47µF/20V Sprague 594 (code C8)

1 x 47µF/20V Kemet T495 (code C8)

**Important Note:** When using the adjustable device in low voltage applications (less than 3V output), if the nomograph, [Figure 6](#), selects an inductance of 22µH or less, Table 6 does not provide an output capacitor solution. With these conditions the number of output capacitors required for stable operation becomes impractical. It is recommended to use either a 33µH or 47µH inductor and the output capacitors from Table 6.

**Step 5:** An input capacitor for this example will require at least a 35V WV rating with an rms current rating of 1A (1/2 I<sub>out max</sub>). From Table 2 it can be seen that C12, a 33µF/35V capacitor from Sprague, has the required voltage/current rating of the surface mount components.

**Step 6:** From Table 5 a 3A Schottky diode must be selected. For surface mount diodes with a margin of safety on the voltage rating one of five diodes can be used:

SK34

30BQ040

30WQ04F

MBRS340

MBRD340

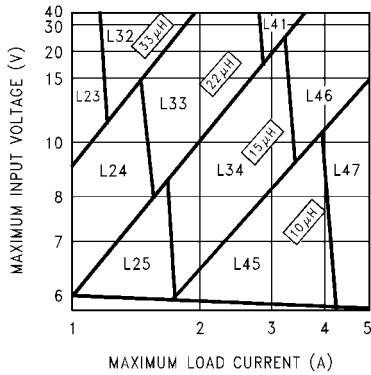
**Step 7:** A 0.01µF capacitor will be used for Cboost.

### LLP PACKAGE DEVICES

The LM2677 is offered in the 14 lead LLP surface mount package to allow for a significantly decreased footprint with equivalent power dissipation compared to the TO-263. For details on mounting and soldering specifications, refer to Application Note AN-1187.

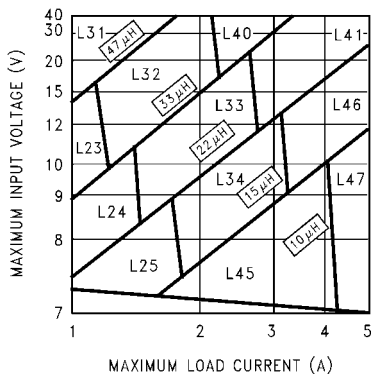
# Inductor Selection Guides

For Continuous Mode Operation



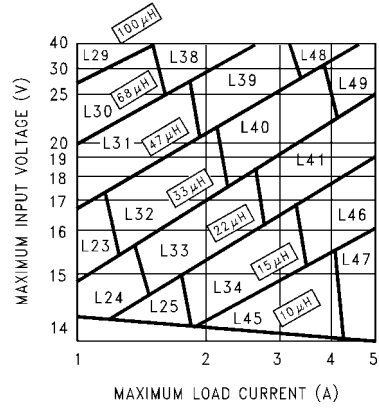
10130121

FIGURE 3. LM2677-3.3



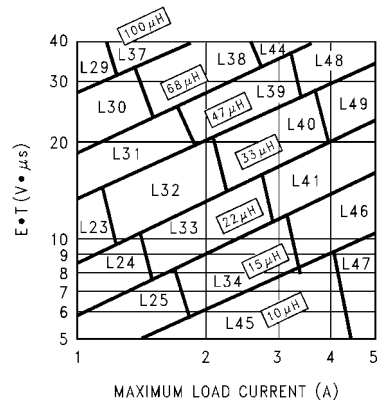
10130122

FIGURE 4. LM2677-5.0



10130123

FIGURE 5. LM2677-12



10130124

FIGURE 6. LM2677-ADJ

TABLE 1. Inductor Manufacturer Part Numbers

| Inductor Reference Number | Inductance ( $\mu\text{H}$ ) | Current (A) | Renco         |               | Pulse Engineering |               | Coilcraft     |
|---------------------------|------------------------------|-------------|---------------|---------------|-------------------|---------------|---------------|
|                           |                              |             | Through Hole  | Surface Mount | Through Hole      | Surface Mount | Surface Mount |
| L23                       | 33                           | 1.35        | RL-5471-7     | RL1500-33     | PE-53823          | PE-53823S     | DO3316-333    |
| L24                       | 22                           | 1.65        | RL-1283-22-43 | RL1500-22     | PE-53824          | PE-53824S     | DO3316-223    |
| L25                       | 15                           | 2.00        | RL-1283-15-43 | RL1500-15     | PE-53825          | PE-53825S     | DO3316-153    |
| L29                       | 100                          | 1.41        | RL-5471-4     | RL-6050-100   | PE-53829          | PE-53829S     | DO5022P-104   |
| L30                       | 68                           | 1.71        | RL-5471-5     | RL6050-68     | PE-53830          | PE-53830S     | DO5022P-683   |
| L31                       | 47                           | 2.06        | RL-5471-6     | RL6050-47     | PE-53831          | PE-53831S     | DO5022P-473   |
| L32                       | 33                           | 2.46        | RL-5471-7     | RL6050-33     | PE-53932          | PE-53932S     | DO5022P-333   |
| L33                       | 22                           | 3.02        | RL-1283-22-43 | RL6050-22     | PE-53933          | PE-53933S     | DO5022P-223   |
| L34                       | 15                           | 3.65        | RL-1283-15-43 | —             | PE-53934          | PE-53934S     | DO5022P-153   |
| L38                       | 68                           | 2.97        | RL-5472-2     | —             | PE-54038          | PE-54038S     | —             |
| L39                       | 47                           | 3.57        | RL-5472-3     | —             | PE-54039          | PE-54039S     | —             |
| L40                       | 33                           | 4.26        | RL-1283-33-43 | —             | PE-54040          | PE-54040S     | —             |
| L41                       | 22                           | 5.22        | RL-1283-22-43 | —             | PE-54041          | P0841         | —             |
| L44                       | 68                           | 3.45        | RL-5473-3     | —             | PE-54044          | —             | —             |
| L45                       | 10                           | 4.47        | RL-1283-10-43 | —             | —                 | P0845         | DO5022P-103HC |
| L46                       | 15                           | 5.60        | RL-1283-15-43 | —             | —                 | P0846         | DO5022P-153HC |
| L47                       | 10                           | 5.66        | RL-1283-10-43 | —             | —                 | P0847         | DO5022P-103HC |
| L48                       | 47                           | 5.61        | RL-1282-47-43 | —             | —                 | P0848         | —             |
| L49                       | 33                           | 5.61        | RL-1282-33-43 | —             | —                 | P0849         | —             |

Inductor Manufacturer Contact Numbers

|                                  |       |                  |
|----------------------------------|-------|------------------|
| <b>Coilcraft</b>                 | Phone | (800) 322-2645   |
|                                  | FAX   | (708) 639-1469   |
| <b>Coilcraft, Europe</b>         | Phone | +44 1236 730 595 |
|                                  | FAX   | +44 1236 730 627 |
| <b>Pulse Engineering</b>         | Phone | (619) 674-8100   |
|                                  | FAX   | (619) 674-8262   |
| <b>Pulse Engineering, Europe</b> | Phone | +353 93 24 107   |
|                                  | FAX   | +353 93 24 459   |
| <b>Renco Electronics</b>         | Phone | (800) 645-5828   |
|                                  | FAX   | (516) 586-5562   |



## Capacitor Selection Guides

TABLE 2. Input and Output Capacitor Codes

| Capacitor Reference Code | Surface Mount  |        |          |                     |        |          |                   |        |          |
|--------------------------|----------------|--------|----------|---------------------|--------|----------|-------------------|--------|----------|
|                          | AVX TPS Series |        |          | Sprague 594D Series |        |          | Kemet T495 Series |        |          |
|                          | C (μF)         | WV (V) | Irms (A) | C (μF)              | WV (V) | Irms (A) | C (μF)            | WV (V) | Irms (A) |
| C1                       | 330            | 6.3    | 1.15     | 120                 | 6.3    | 1.1      | 100               | 6.3    | 0.82     |
| C2                       | 100            | 10     | 1.1      | 220                 | 6.3    | 1.4      | 220               | 6.3    | 1.1      |
| C3                       | 220            | 10     | 1.15     | 68                  | 10     | 1.05     | 330               | 6.3    | 1.1      |
| C4                       | 47             | 16     | 0.89     | 150                 | 10     | 1.35     | 100               | 10     | 1.1      |
| C5                       | 100            | 16     | 1.15     | 47                  | 16     | 1        | 150               | 10     | 1.1      |
| C6                       | 33             | 20     | 0.77     | 100                 | 16     | 1.3      | 220               | 10     | 1.1      |
| C7                       | 68             | 20     | 0.94     | 180                 | 16     | 1.95     | 33                | 20     | 0.78     |
| C8                       | 22             | 25     | 0.77     | 47                  | 20     | 1.15     | 47                | 20     | 0.94     |
| C9                       | 10             | 35     | 0.63     | 33                  | 25     | 1.05     | 68                | 20     | 0.94     |
| C10                      | 22             | 35     | 0.66     | 68                  | 25     | 1.6      | 10                | 35     | 0.63     |
| C11                      |                |        |          | 15                  | 35     | 0.75     | 22                | 35     | 0.63     |
| C12                      |                |        |          | 33                  | 35     | 1        | 4.7               | 50     | 0.66     |
| C13                      |                |        |          | 15                  | 50     | 0.9      |                   |        |          |

Input and Output Capacitor Codes (continued)

| Capacitor Reference Code | Through Hole           |        |          |                    |        |          |                    |        |          |                      |        |          |
|--------------------------|------------------------|--------|----------|--------------------|--------|----------|--------------------|--------|----------|----------------------|--------|----------|
|                          | Sanyo OS-CON SA Series |        |          | Sanyo MV-GX Series |        |          | Nichicon PL Series |        |          | Panasonic HFQ Series |        |          |
|                          | C (μF)                 | WV (V) | Irms (A) | C (μF)             | WV (V) | Irms (A) | C (μF)             | WV (V) | Irms (A) | C (μF)               | WV (V) | Irms (A) |
| C1                       | 47                     | 6.3    | 1        | 1000               | 6.3    | 0.8      | 680                | 10     | 0.8      | 82                   | 35     | 0.4      |
| C2                       | 150                    | 6.3    | 1.95     | 270                | 16     | 0.6      | 820                | 10     | 0.98     | 120                  | 35     | 0.44     |
| C3                       | 330                    | 6.3    | 2.45     | 470                | 16     | 0.75     | 1000               | 10     | 1.06     | 220                  | 35     | 0.76     |
| C4                       | 100                    | 10     | 1.87     | 560                | 16     | 0.95     | 1200               | 10     | 1.28     | 330                  | 35     | 1.01     |
| C5                       | 220                    | 10     | 2.36     | 820                | 16     | 1.25     | 2200               | 10     | 1.71     | 560                  | 35     | 1.4      |
| C6                       | 33                     | 16     | 0.96     | 1000               | 16     | 1.3      | 3300               | 10     | 2.18     | 820                  | 35     | 1.62     |
| C7                       | 100                    | 16     | 1.92     | 150                | 35     | 0.65     | 3900               | 10     | 2.36     | 1000                 | 35     | 1.73     |
| C8                       | 150                    | 16     | 2.28     | 470                | 35     | 1.3      | 6800               | 10     | 2.68     | 2200                 | 35     | 2.8      |
| C9                       | 100                    | 20     | 2.25     | 680                | 35     | 1.4      | 180                | 16     | 0.41     | 56                   | 50     | 0.36     |
| C10                      | 47                     | 25     | 2.09     | 1000               | 35     | 1.7      | 270                | 16     | 0.55     | 100                  | 50     | 0.5      |
| C11                      |                        |        |          | 220                | 63     | 0.76     | 470                | 16     | 0.77     | 220                  | 50     | 0.92     |
| C12                      |                        |        |          | 470                | 63     | 1.2      | 680                | 16     | 1.02     | 470                  | 50     | 1.44     |
| C13                      |                        |        |          | 680                | 63     | 1.5      | 820                | 16     | 1.22     | 560                  | 50     | 1.68     |
| C14                      |                        |        |          | 1000               | 63     | 1.75     | 1800               | 16     | 1.88     | 1200                 | 50     | 2.22     |
| C15                      |                        |        |          |                    |        |          | 220                | 25     | 0.63     | 330                  | 63     | 1.42     |
| C16                      |                        |        |          |                    |        |          | 220                | 35     | 0.79     | 1500                 | 63     | 2.51     |
| C17                      |                        |        |          |                    |        |          | 560                | 35     | 1.43     |                      |        |          |
| C18                      |                        |        |          |                    |        |          | 2200               | 35     | 2.68     |                      |        |          |
| C19                      |                        |        |          |                    |        |          | 150                | 50     | 0.82     |                      |        |          |
| C20                      |                        |        |          |                    |        |          | 220                | 50     | 1.04     |                      |        |          |
| C21                      |                        |        |          |                    |        |          | 330                | 50     | 1.3      |                      |        |          |
| C22                      |                        |        |          |                    |        |          | 100                | 63     | 0.75     |                      |        |          |
| C23                      |                        |        |          |                    |        |          | 390                | 63     | 1.62     |                      |        |          |
| C24                      |                        |        |          |                    |        |          | 820                | 63     | 2.22     |                      |        |          |
| C25                      |                        |        |          |                    |        |          | 1200               | 63     | 2.51     |                      |        |          |

**Capacitor Manufacturer Contact Numbers**

|                       |       |                |
|-----------------------|-------|----------------|
| <b>Nichicon</b>       | Phone | (847) 843-7500 |
|                       | FAX   | (847) 843-2798 |
| <b>Panasonic</b>      | Phone | (714) 373-7857 |
|                       | FAX   | (714) 373-7102 |
| <b>AVX</b>            | Phone | (845) 448-9411 |
|                       | FAX   | (845) 448-1943 |
| <b>Sprague/Vishay</b> | Phone | (207) 324-4140 |
|                       | FAX   | (207) 324-7223 |
| <b>Sanyo</b>          | Phone | (619) 661-6322 |
|                       | FAX   | (619) 661-1055 |
| <b>Kemet</b>          | Phone | (864) 963-6300 |
|                       | FAX   | (864) 963-6521 |

TABLE 3. Output Capacitors for Fixed Output Voltage Application

| Output Voltage (V) | Inductance ( $\mu\text{H}$ ) | Surface Mount  |        |                     |        |                   |        |
|--------------------|------------------------------|----------------|--------|---------------------|--------|-------------------|--------|
|                    |                              | AVX TPS Series |        | Sprague 594D Series |        | Kemet T495 Series |        |
|                    |                              | No.            | C Code | No.                 | C Code | No.               | C Code |
| 3.3                | 10                           | 5              | C1     | 5                   | C1     | 5                 | C2     |
|                    | 15                           | 4              | C1     | 4                   | C1     | 4                 | C3     |
|                    | 22                           | 3              | C2     | 2                   | C7     | 3                 | C4     |
|                    | 33                           | 1              | C1     | 2                   | C7     | 3                 | C4     |
| 5                  | 10                           | 4              | C2     | 4                   | C6     | 4                 | C4     |
|                    | 15                           | 3              | C3     | 2                   | C7     | 3                 | C5     |
|                    | 22                           | 3              | C2     | 2                   | C7     | 3                 | C4     |
|                    | 33                           | 2              | C2     | 2                   | C3     | 2                 | C4     |
|                    | 47                           | 2              | C2     | 1                   | C7     | 2                 | C4     |
| 12                 | 10                           | 4              | C5     | 3                   | C6     | 5                 | C9     |
|                    | 15                           | 3              | C5     | 2                   | C7     | 4                 | C9     |
|                    | 22                           | 2              | C5     | 2                   | C6     | 3                 | C8     |
|                    | 33                           | 2              | C5     | 1                   | C7     | 3                 | C8     |
|                    | 47                           | 2              | C4     | 1                   | C6     | 2                 | C8     |
|                    | 68                           | 1              | C5     | 1                   | C5     | 2                 | C7     |
|                    | 100                          | 1              | C4     | 1                   | C5     | 1                 | C8     |

| Output Voltage (V) | Inductance ( $\mu\text{H}$ ) | Through Hole           |        |                    |        |                    |        |                      |        |
|--------------------|------------------------------|------------------------|--------|--------------------|--------|--------------------|--------|----------------------|--------|
|                    |                              | Sanyo OS-CON SA Series |        | Sanyo MV-GX Series |        | Nichicon PL Series |        | Panasonic HFQ Series |        |
|                    |                              | No.                    | C Code | No.                | C Code | No.                | C Code | No.                  | C Code |
| 3.3                | 10                           | 2                      | C5     | 2                  | C6     | 1                  | C8     | 2                    | C6     |
|                    | 15                           | 2                      | C5     | 2                  | C5     | 1                  | C7     | 2                    | C5     |
|                    | 22                           | 1                      | C5     | 1                  | C10    | 1                  | C5     | 1                    | C7     |
|                    | 33                           | 1                      | C5     | 1                  | C10    | 1                  | C5     | 1                    | C7     |
| 5                  | 10                           | 2                      | C4     | 2                  | C5     | 1                  | C6     | 2                    | C5     |
|                    | 15                           | 1                      | C5     | 1                  | C10    | 1                  | C5     | 1                    | C7     |
|                    | 22                           | 1                      | C5     | 1                  | C9     | 1                  | C5     | 1                    | C5     |
|                    | 33                           | 1                      | C4     | 1                  | C5     | 1                  | C4     | 1                    | C4     |
|                    | 47                           | 1                      | C4     | 1                  | C4     | 1                  | C2     | 2                    | C4     |
| 12                 | 10                           | 2                      | C7     | 1                  | C10    | 1                  | C14    | 2                    | C4     |
|                    | 15                           | 1                      | C8     | 1                  | C6     | 1                  | C17    | 1                    | C5     |
|                    | 22                           | 1                      | C7     | 1                  | C5     | 1                  | C13    | 1                    | C5     |
|                    | 33                           | 1                      | C7     | 1                  | C4     | 1                  | C12    | 1                    | C4     |
|                    | 47                           | 1                      | C7     | 1                  | C3     | 1                  | C11    | 1                    | C3     |
|                    | 68                           | 1                      | C6     | 1                  | C2     | 1                  | C10    | 1                    | C3     |
|                    | 100                          | 1                      | C6     | 1                  | C2     | 1                  | C9     | 1                    | C1     |

No. represents the number of identical capacitor types to be connected in parallel

C Code indicates the Capacitor Reference number in [Table 2](#) for identifying the specific component from the manufacturer.

**TABLE 4. Input Capacitors for Fixed Output Voltage Application**

(Assumes worst case maximum input voltage and load current for a given inductance value)

| Output Voltage (V) | Inductance (µH) | Surface Mount  |        |                     |        |                   |        |
|--------------------|-----------------|----------------|--------|---------------------|--------|-------------------|--------|
|                    |                 | AVX TPS Series |        | Sprague 594D Series |        | Kemet T495 Series |        |
|                    |                 | No.            | C Code | No.                 | C Code | No.               | C Code |
| 3.3                | 10              | 3              | C7     | 2                   | C10    | 3                 | C9     |
|                    | 15              | *              | *      | 3                   | C13    | 4                 | C12    |
|                    | 22              | *              | *      | 2                   | C13    | 3                 | C12    |
|                    | 33              | *              | *      | 2                   | C13    | 3                 | C12    |
| 5                  | 10              | 3              | C4     | 2                   | C6     | 3                 | C9     |
|                    | 15              | 4              | C9     | 3                   | C12    | 4                 | C10    |
|                    | 22              | *              | *      | 3                   | C13    | 4                 | C12    |
|                    | 33              | *              | *      | 2                   | C13    | 3                 | C12    |
|                    | 47              | *              | *      | 1                   | C13    | 2                 | C12    |
| 12                 | 10              | 4              | C9     | 2                   | C10    | 4                 | C10    |
|                    | 15              | 4              | C8     | 2                   | C10    | 4                 | C10    |
|                    | 22              | 4              | C9     | 3                   | C12    | 4                 | C10    |
|                    | 33              | *              | *      | 3                   | C13    | 4                 | C12    |
|                    | 47              | *              | *      | 2                   | C13    | 3                 | C12    |
|                    | 68              | *              | *      | 2                   | C13    | 2                 | C12    |
|                    | 100             | *              | *      | 1                   | C13    | 2                 | C12    |

| Output Voltage (V) | Inductance (µH) | Through Hole           |        |                    |        |                    |        |                      |        |
|--------------------|-----------------|------------------------|--------|--------------------|--------|--------------------|--------|----------------------|--------|
|                    |                 | Sanyo OS-CON SA Series |        | Sanyo MV-GX Series |        | Nichicon PL Series |        | Panasonic HFQ Series |        |
|                    |                 | No.                    | C Code | No.                | C Code | No.                | C Code | No.                  | C Code |
| 3.3                | 10              | 2                      | C9     | 2                  | C8     | 1                  | C18    | 1                    | C8     |
|                    | 15              | *                      | *      | 2                  | C13    | 1                  | C25    | 1                    | C16    |
|                    | 22              | *                      | *      | 1                  | C14    | 1                  | C24    | 1                    | C16    |
|                    | 33              | *                      | *      | 1                  | C14    | 1                  | C24    | 1                    | C16    |
| 5                  | 10              | 2                      | C7     | 2                  | C8     | 1                  | C25    | 1                    | C8     |
|                    | 15              | *                      | *      | 2                  | C8     | 1                  | C25    | 1                    | C8     |
|                    | 22              | *                      | *      | 2                  | C13    | 1                  | C25    | 1                    | C16    |
|                    | 33              | *                      | *      | 1                  | C14    | 1                  | C23    | 1                    | C13    |
|                    | 47              | *                      | *      | 1                  | C12    | 1                  | C19    | 1                    | C11    |
| 12                 | 10              | 2                      | C10    | 2                  | C8     | 1                  | C18    | 1                    | C8     |
|                    | 15              | 2                      | C10    | 2                  | C8     | 1                  | C18    | 1                    | C8     |
|                    | 22              | *                      | *      | 2                  | C8     | 1                  | C18    | 1                    | C8     |
|                    | 33              | *                      | *      | 2                  | C12    | 1                  | C24    | 1                    | C14    |
|                    | 47              | *                      | *      | 1                  | C14    | 1                  | C23    | 1                    | C13    |
|                    | 68              | *                      | *      | 1                  | C13    | 1                  | C21    | 1                    | C15    |
|                    | 100             | *                      | *      | 1                  | C11    | 1                  | C22    | 1                    | C11    |

\* Check voltage rating of capacitors to be greater than application input voltage.

No. represents the number of identical capacitor types to be connected in parallel

C Code indicates the Capacitor Reference number in [Table 2](#) for identifying the specific component from the manufacturer.

TABLE 5. Schottky Diode Selection Table

| Reverse Voltage (V) | Surface Mount                                    |                       | Through Hole                        |                             |
|---------------------|--|-----------------------|-------------------------------------|-----------------------------|
|                     | 3A   | 5A or More            | 3A                                  | 5A or More                  |
| 20V                 | SK32   |                       | 1N5820<br>SR302                     |                             |
| 30V                 | SK33<br>30WQ03F                                  | MBRD835L              | 1N5821<br>31DQ03                    |                             |
| 40V                 | SK34<br>30BQ040<br>30WQ04F<br>MBRS340<br>MBRD340 | MBRB1545CT<br>6TQ045S | 1N5822<br>MBR340<br>31DQ04<br>SR403 | MBR745<br>80SQ045<br>6TQ045 |
| 50V or More         | SK35<br>30WQ05F                                  |                       | MBR350<br>31DQ05<br>SR305           |                             |

## Diode Manufacturer Contact Numbers

|                                |       |                |
|--------------------------------|-------|----------------|
| <b>International Rectifier</b> | Phone | (310) 322-3331 |
|                                | FAX   | (310) 322-3332 |
| <b>Motorola</b>                | Phone | (800) 521-6274 |
|                                | FAX   | (602) 244-6609 |
| <b>General Semiconductor</b>   | Phone | (516) 847-3000 |
|                                | FAX   | (516) 847-3236 |
| <b>Diodes, Inc.</b>            | Phone | (805) 446-4800 |
|                                | FAX   | (805) 446-4850 |

TABLE 6. Output Capacitors for Adjustable Output Voltage Applications

| Output Voltage (V) | Inductance ( $\mu\text{H}$ ) | Surface Mount       |        |                     |        |                   |        |
|--------------------|------------------------------|---------------------|--------|---------------------|--------|-------------------|--------|
|                    |                              | AVX TPS Series      |        | Sprague 594D Series |        | Kemet T495 Series |        |
|                    |                              | No.                 | C Code | No.                 | C Code | No.               | C Code |
| 1.21 to 2.50       | 33*                          | 7                   | C1     | 6                   | C2     | 7                 | C3     |
|                    | 47*                          | 5                   | C1     | 4                   | C2     | 5                 | C3     |
| 2.5 to 3.75        | 33*                          | 4                   | C1     | 3                   | C2     | 4                 | C3     |
|                    | 47*                          | 3                   | C1     | 2                   | C2     | 3                 | C3     |
| 3.75 to 5          | 22                           | 4                   | C1     | 3                   | C2     | 4                 | C3     |
|                    | 33                           | 3                   | C1     | 2                   | C2     | 3                 | C3     |
|                    | 47                           | 2                   | C1     | 2                   | C2     | 2                 | C3     |
| 5 to 6.25          | 22                           | 3                   | C2     | 1                   | C3     | 3                 | C4     |
|                    | 33                           | 2                   | C2     | 2                   | C3     | 2                 | C4     |
|                    | 47                           | 2                   | C2     | 2                   | C3     | 2                 | C4     |
|                    | 68                           | 1                   | C2     | 1                   | C3     | 1                 | C4     |
| 6.25 to 7.5        | 22                           | 3                   | C2     | 1                   | C4     | 3                 | C4     |
|                    | 33                           | 2                   | C2     | 1                   | C3     | 2                 | C4     |
|                    | 47                           | 1                   | C3     | 1                   | C4     | 1                 | C6     |
|                    | 68                           | 1                   | C2     | 1                   | C3     | 1                 | C4     |
| 7.5 to 10          | 33                           | 2                   | C5     | 1                   | C6     | 2                 | C8     |
|                    | 47                           | 1                   | C5     | 1                   | C6     | 2                 | C8     |
|                    | 68                           | 1                   | C5     | 1                   | C6     | 1                 | C8     |
|                    | 100                          | 1                   | C4     | 1                   | C5     | 1                 | C8     |
| 10 to 12.5         | 33                           | 1                   | C5     | 1                   | C6     | 2                 | C8     |
|                    | 47                           | 1                   | C5     | 1                   | C6     | 2                 | C8     |
|                    | 68                           | 1                   | C5     | 1                   | C6     | 1                 | C8     |
|                    | 100                          | 1                   | C5     | 1                   | C6     | 1                 | C8     |
| 12.5 to 15         | 33                           | 1                   | C6     | 1                   | C8     | 1                 | C8     |
|                    | 47                           | 1                   | C6     | 1                   | C8     | 1                 | C8     |
|                    | 68                           | 1                   | C6     | 1                   | C8     | 1                 | C8     |
|                    | 100                          | 1                   | C6     | 1                   | C8     | 1                 | C8     |
| 15 to 20           | 33                           | 1                   | C8     | 1                   | C10    | 2                 | C10    |
|                    | 47                           | 1                   | C8     | 1                   | C9     | 2                 | C10    |
|                    | 68                           | 1                   | C8     | 1                   | C9     | 2                 | C10    |
|                    | 100                          | 1                   | C8     | 1                   | C9     | 1                 | C10    |
| 20 to 30           | 33                           | 2                   | C9     | 2                   | C11    | 2                 | C11    |
|                    | 47                           | 1                   | C10    | 1                   | C12    | 1                 | C11    |
|                    | 68                           | 1                   | C9     | 1                   | C12    | 1                 | C11    |
|                    | 100                          | 1                   | C9     | 1                   | C12    | 1                 | C11    |
| 30 to 37           | 10                           | No Values Available |        | 4                   | C13    | 8                 | C12    |
|                    | 15                           |                     |        | 3                   | C13    | 5                 | C12    |
|                    | 22                           |                     |        | 2                   | C13    | 4                 | C12    |
|                    | 33                           |                     |        | 1                   | C13    | 3                 | C12    |
|                    | 47                           |                     |        | 1                   | C13    | 2                 | C12    |
|                    | 68                           |                     |        | 1                   | C13    | 2                 | C12    |

## Output Capacitors for Adjustable Output Voltage Applications (continued)

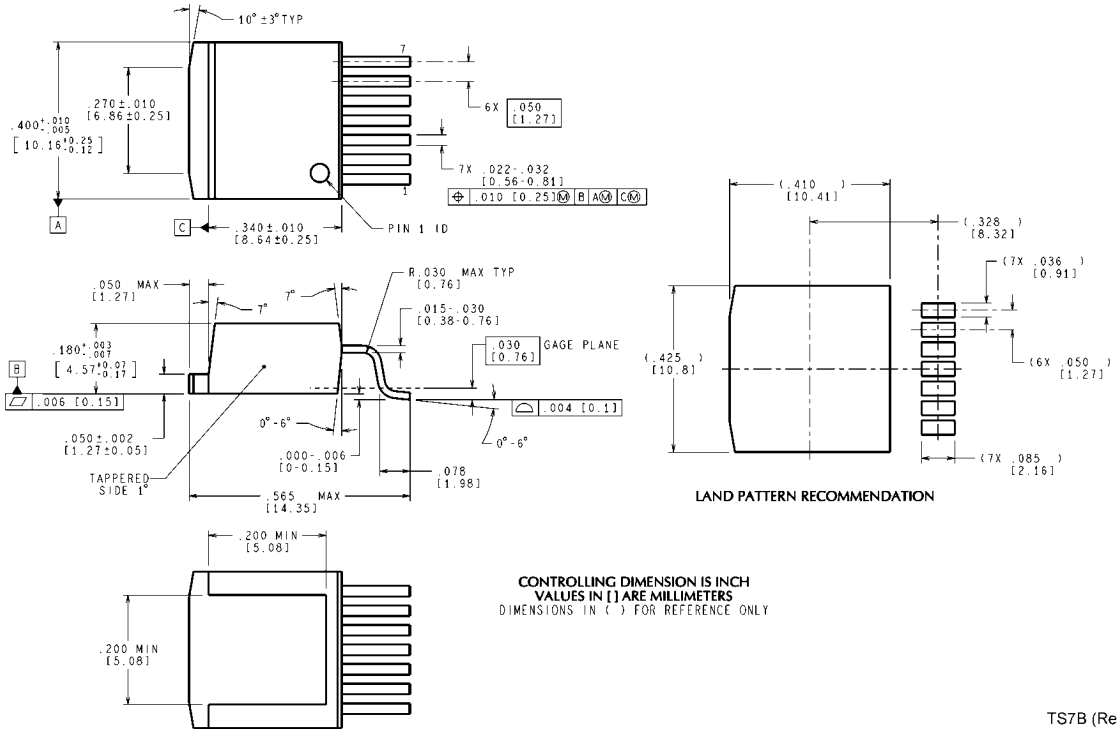
| Output Voltage (V) | Inductance (µH) | Through Hole           |        |                    |        |                    |        |                      |        |
|--------------------|-----------------|------------------------|--------|--------------------|--------|--------------------|--------|----------------------|--------|
|                    |                 | Sanyo OS-CON SA Series |        | Sanyo MV-GX Series |        | Nichicon PL Series |        | Panasonic HFQ Series |        |
|                    |                 | No.                    | C Code | No.                | C Code | No.                | C Code | No.                  | C Code |
| 1.21 to 2.50       | 33*             | 2                      | C3     | 5                  | C1     | 5                  | C3     | 3                    | C      |
|                    | 47*             | 2                      | C2     | 4                  | C1     | 3                  | C3     | 2                    | C5     |
| 2.5 to 3.75        | 33*             | 1                      | C3     | 3                  | C1     | 3                  | C1     | 2                    | C5     |
|                    | 47*             | 1                      | C2     | 2                  | C1     | 2                  | C3     | 1                    | C5     |
| 3.75 to 5          | 22              | 1                      | C3     | 3                  | C1     | 3                  | C1     | 2                    | C5     |
|                    | 33              | 1                      | C2     | 2                  | C1     | 2                  | C1     | 1                    | C5     |
|                    | 47              | 1                      | C2     | 2                  | C1     | 1                  | C3     | 1                    | C5     |
| 5 to 6.25          | 22              | 1                      | C5     | 2                  | C6     | 2                  | C3     | 2                    | C5     |
|                    | 33              | 1                      | C4     | 1                  | C6     | 2                  | C1     | 1                    | C5     |
|                    | 47              | 1                      | C4     | 1                  | C6     | 1                  | C3     | 1                    | C5     |
|                    | 68              | 1                      | C4     | 1                  | C6     | 1                  | C1     | 1                    | C5     |
| 6.25 to 7.5        | 22              | 1                      | C5     | 1                  | C6     | 2                  | C1     | 1                    | C5     |
|                    | 33              | 1                      | C4     | 1                  | C6     | 1                  | C3     | 1                    | C5     |
|                    | 47              | 1                      | C4     | 1                  | C6     | 1                  | C1     | 1                    | C5     |
|                    | 68              | 1                      | C4     | 1                  | C2     | 1                  | C1     | 1                    | C5     |
| 7.5 to 10          | 33              | 1                      | C7     | 1                  | C6     | 1                  | C14    | 1                    | C5     |
|                    | 47              | 1                      | C7     | 1                  | C6     | 1                  | C14    | 1                    | C5     |
|                    | 68              | 1                      | C7     | 1                  | C2     | 1                  | C14    | 1                    | C2     |
|                    | 100             | 1                      | C7     | 1                  | C2     | 1                  | C14    | 1                    | C2     |
| 10 to 12.5         | 33              | 1                      | C7     | 1                  | C6     | 1                  | C14    | 1                    | C5     |
|                    | 47              | 1                      | C7     | 1                  | C2     | 1                  | C14    | 1                    | C5     |
|                    | 68              | 1                      | C7     | 1                  | C2     | 1                  | C9     | 1                    | C2     |
|                    | 100             | 1                      | C7     | 1                  | C2     | 1                  | C9     | 1                    | C2     |
| 12.5 to 15         | 33              | 1                      | C9     | 1                  | C10    | 1                  | C15    | 1                    | C2     |
|                    | 47              | 1                      | C9     | 1                  | C10    | 1                  | C15    | 1                    | C2     |
|                    | 68              | 1                      | C9     | 1                  | C10    | 1                  | C15    | 1                    | C2     |
|                    | 100             | 1                      | C9     | 1                  | C10    | 1                  | C15    | 1                    | C2     |
| 15 to 20           | 33              | 1                      | C10    | 1                  | C7     | 1                  | C15    | 1                    | C2     |
|                    | 47              | 1                      | C10    | 1                  | C7     | 1                  | C15    | 1                    | C2     |
|                    | 68              | 1                      | C10    | 1                  | C7     | 1                  | C15    | 1                    | C2     |
|                    | 100             | 1                      | C10    | 1                  | C7     | 1                  | C15    | 1                    | C2     |
| 20 to 30           | 33              | No Values Available    |        | 1                  | C7     | 1                  | C16    | 1                    | C2     |
|                    | 47              |                        |        | 1                  | C7     | 1                  | C16    | 1                    | C2     |
|                    | 68              |                        |        | 1                  | C7     | 1                  | C16    | 1                    | C2     |
|                    | 100             |                        |        | 1                  | C7     | 1                  | C16    | 1                    | C2     |
| 30 to 37           | 10              | No Values Available    |        | 1                  | C12    | 1                  | C20    | 1                    | C10    |
|                    | 15              |                        |        | 1                  | C11    | 1                  | C20    | 1                    | C11    |
|                    | 22              |                        |        | 1                  | C11    | 1                  | C20    | 1                    | C10    |
|                    | 33              |                        |        | 1                  | C11    | 1                  | C20    | 1                    | C10    |
|                    | 47              |                        |        | 1                  | C11    | 1                  | C20    | 1                    | C10    |
|                    | 68              |                        |        | 1                  | C11    | 1                  | C20    | 1                    | C10    |

\* Set to a higher value for a practical design solution. See Applications Hints section

No. represents the number of identical capacitor types to be connected in parallel

C Code indicates the Capacitor Reference number in [Table 2](#) for identifying the specific component from the manufacturer.

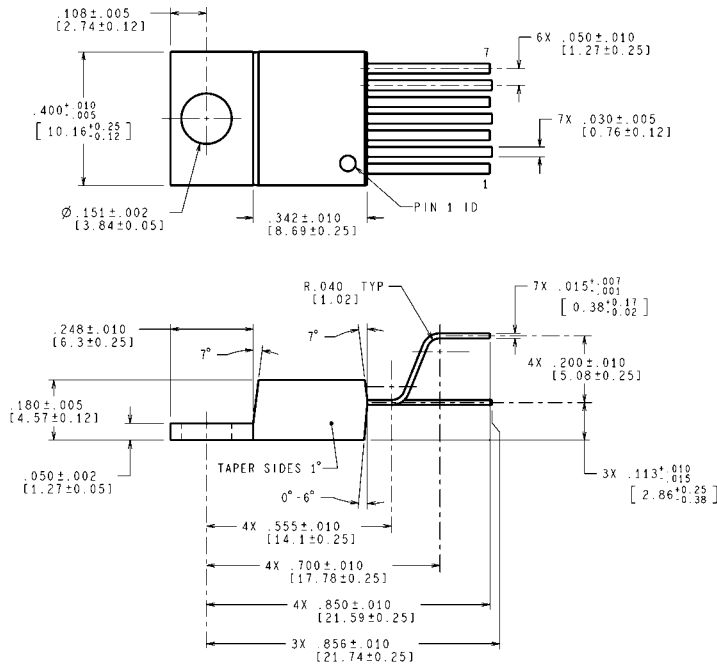
**Physical Dimensions** inches (millimeters) unless otherwise noted



**TO-263 Surface Mount Power Package**  
**Order Number LM2677S-3.3, LM2677S-5.0,**  
**LM2677S-12 or LM2677S-ADJ**  
**NS Package Number TS7B**

TS7B (Rev E)

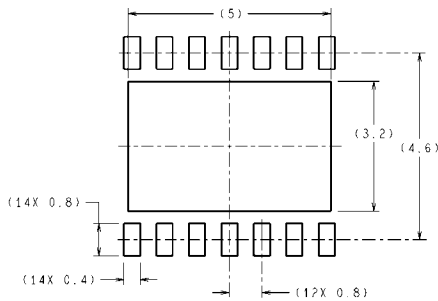




CONTROLLING DIMENSIONS IS INCH  
 VALUES IN [ ] ARE MILLIMETERS

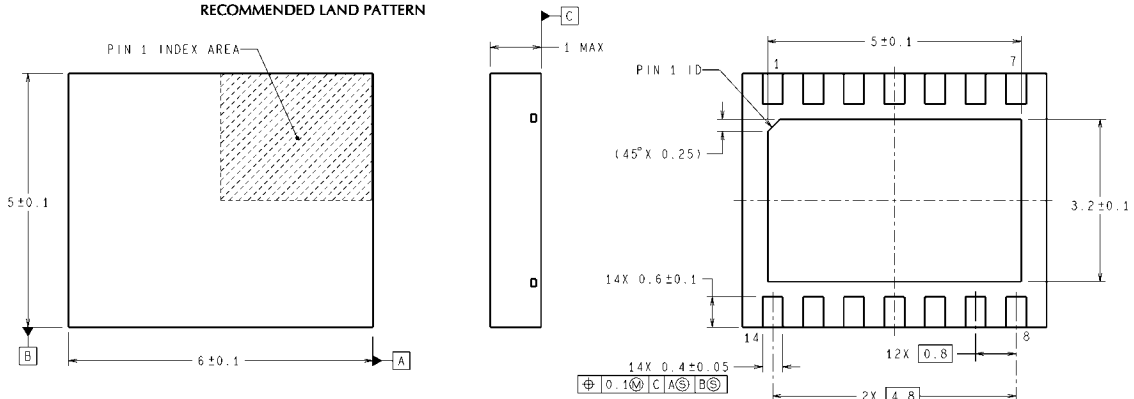
TA07B (Rev E)

**TO-220 Power Package**  
**Order Number LM2677T-3.3, LM2677T-5.0,**  
**LM2677T-12 or LM2677T-ADJ**  
**NS Package Number TA07B**



RECOMMENDED LAND PATTERN

DIMENSIONS ARE IN MILLIMETERS  
 DIMENSIONS IN ( ) FOR REFERENCE ONLY



SRC14A (Rev A)

**14-Lead LLP Package**  
**NS Package Number SRC14A**

**Notes**

## IMPORTANT NOTICE

Texas Instruments Incorporated and its subsidiaries (TI) reserve the right to make corrections, modifications, enhancements, improvements, and other changes to its products and services at any time and to discontinue any product or service without notice. Customers should obtain the latest relevant information before placing orders and should verify that such information is current and complete. All products are sold subject to TI's terms and conditions of sale supplied at the time of order acknowledgment.

TI warrants performance of its hardware products to the specifications applicable at the time of sale in accordance with TI's standard warranty. Testing and other quality control techniques are used to the extent TI deems necessary to support this warranty. Except where mandated by government requirements, testing of all parameters of each product is not necessarily performed.

TI assumes no liability for applications assistance or customer product design. Customers are responsible for their products and applications using TI components. To minimize the risks associated with customer products and applications, customers should provide adequate design and operating safeguards.

TI does not warrant or represent that any license, either express or implied, is granted under any TI patent right, copyright, mask work right, or other TI intellectual property right relating to any combination, machine, or process in which TI products or services are used. Information published by TI regarding third-party products or services does not constitute a license from TI to use such products or services or a warranty or endorsement thereof. Use of such information may require a license from a third party under the patents or other intellectual property of the third party, or a license from TI under the patents or other intellectual property of TI.

Reproduction of TI information in TI data books or data sheets is permissible only if reproduction is without alteration and is accompanied by all associated warranties, conditions, limitations, and notices. Reproduction of this information with alteration is an unfair and deceptive business practice. TI is not responsible or liable for such altered documentation. Information of third parties may be subject to additional restrictions.

Resale of TI products or services with statements different from or beyond the parameters stated by TI for that product or service voids all express and any implied warranties for the associated TI product or service and is an unfair and deceptive business practice. TI is not responsible or liable for any such statements.

TI products are not authorized for use in safety-critical applications (such as life support) where a failure of the TI product would reasonably be expected to cause severe personal injury or death, unless officers of the parties have executed an agreement specifically governing such use. Buyers represent that they have all necessary expertise in the safety and regulatory ramifications of their applications, and acknowledge and agree that they are solely responsible for all legal, regulatory and safety-related requirements concerning their products and any use of TI products in such safety-critical applications, notwithstanding any applications-related information or support that may be provided by TI. Further, Buyers must fully indemnify TI and its representatives against any damages arising out of the use of TI products in such safety-critical applications.

TI products are neither designed nor intended for use in military/aerospace applications or environments unless the TI products are specifically designated by TI as military-grade or "enhanced plastic." Only products designated by TI as military-grade meet military specifications. Buyers acknowledge and agree that any such use of TI products which TI has not designated as military-grade is solely at the Buyer's risk, and that they are solely responsible for compliance with all legal and regulatory requirements in connection with such use.

TI products are neither designed nor intended for use in automotive applications or environments unless the specific TI products are designated by TI as compliant with ISO/TS 16949 requirements. Buyers acknowledge and agree that, if they use any non-designated products in automotive applications, TI will not be responsible for any failure to meet such requirements.

Following are URLs where you can obtain information on other Texas Instruments products and application solutions:

### Products

|                        |  |
|------------------------|--|
| Audio                  | <a href="http://www.ti.com/audio">www.ti.com/audio</a>                               |
| Amplifiers             | <a href="http://amplifier.ti.com">amplifier.ti.com</a>                               |
| Data Converters        | <a href="http://dataconverter.ti.com">dataconverter.ti.com</a>                       |
| DLP® Products          | <a href="http://www.dlp.com">www.dlp.com</a>   |
| DSP                    | <a href="http://dsp.ti.com">dsp.ti.com</a>   |
| Clocks and Timers      | <a href="http://www.ti.com/clocks">www.ti.com/clocks</a>                             |
| Interface              | <a href="http://interface.ti.com">interface.ti.com</a>                               |
| Logic                  | <a href="http://logic.ti.com">logic.ti.com</a>                                       |
| Power Mgmt             | <a href="http://power.ti.com">power.ti.com</a>                                       |
| Microcontrollers       | <a href="http://microcontroller.ti.com">microcontroller.ti.com</a>                   |
| RFID                   | <a href="http://www.ti-rfid.com">www.ti-rfid.com</a>                                 |
| OMAP Mobile Processors | <a href="http://www.ti.com/omap">www.ti.com/omap</a>                                 |
| Wireless Connectivity  | <a href="http://www.ti.com/wirelessconnectivity">www.ti.com/wirelessconnectivity</a> |

### Applications

|                               |  |
|-------------------------------|--|
| Automotive and Transportation | <a href="http://www.ti.com/automotive">www.ti.com/automotive</a>                         |
| Communications and Telecom    | <a href="http://www.ti.com/communications">www.ti.com/communications</a>                 |
| Computers and Peripherals     | <a href="http://www.ti.com/computers">www.ti.com/computers</a>                           |
| Consumer Electronics          | <a href="http://www.ti.com/consumer-apps">www.ti.com/consumer-apps</a>                   |
| Energy and Lighting           | <a href="http://www.ti.com/energy">www.ti.com/energy</a>                                 |
| Industrial                    | <a href="http://www.ti.com/industrial">www.ti.com/industrial</a>                         |
| Medical                       | <a href="http://www.ti.com/medical">www.ti.com/medical</a>                               |
| Security                      | <a href="http://www.ti.com/security">www.ti.com/security</a>                             |
| Space, Avionics and Defense   | <a href="http://www.ti.com/space-avionics-defense">www.ti.com/space-avionics-defense</a> |
| Video and Imaging             | <a href="http://www.ti.com/video">www.ti.com/video</a>                                   |

TI E2E Community Home Page

[e2e.ti.com](http://e2e.ti.com)

Mailing Address: Texas Instruments, Post Office Box 655303, Dallas, Texas 75265  
Copyright © 2012, Texas Instruments Incorporated