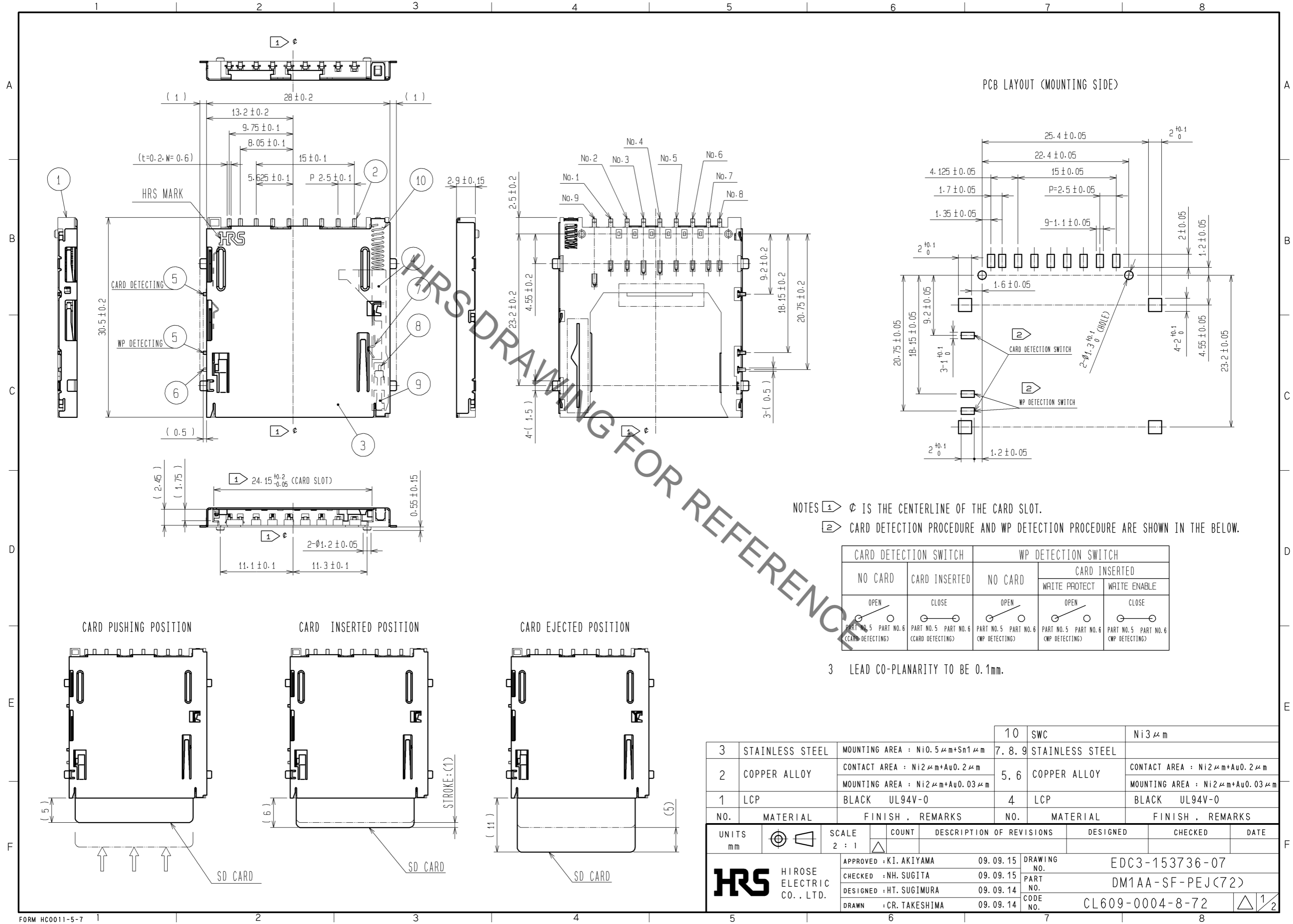


Sep.1.2019 Copyright 2019 HIROSE ELECTRIC CO., LTD. All Rights Reserved.
 In case of consideration for using Automotive equipment / device which demand high reliability, kindly contact our sales window correspondents.



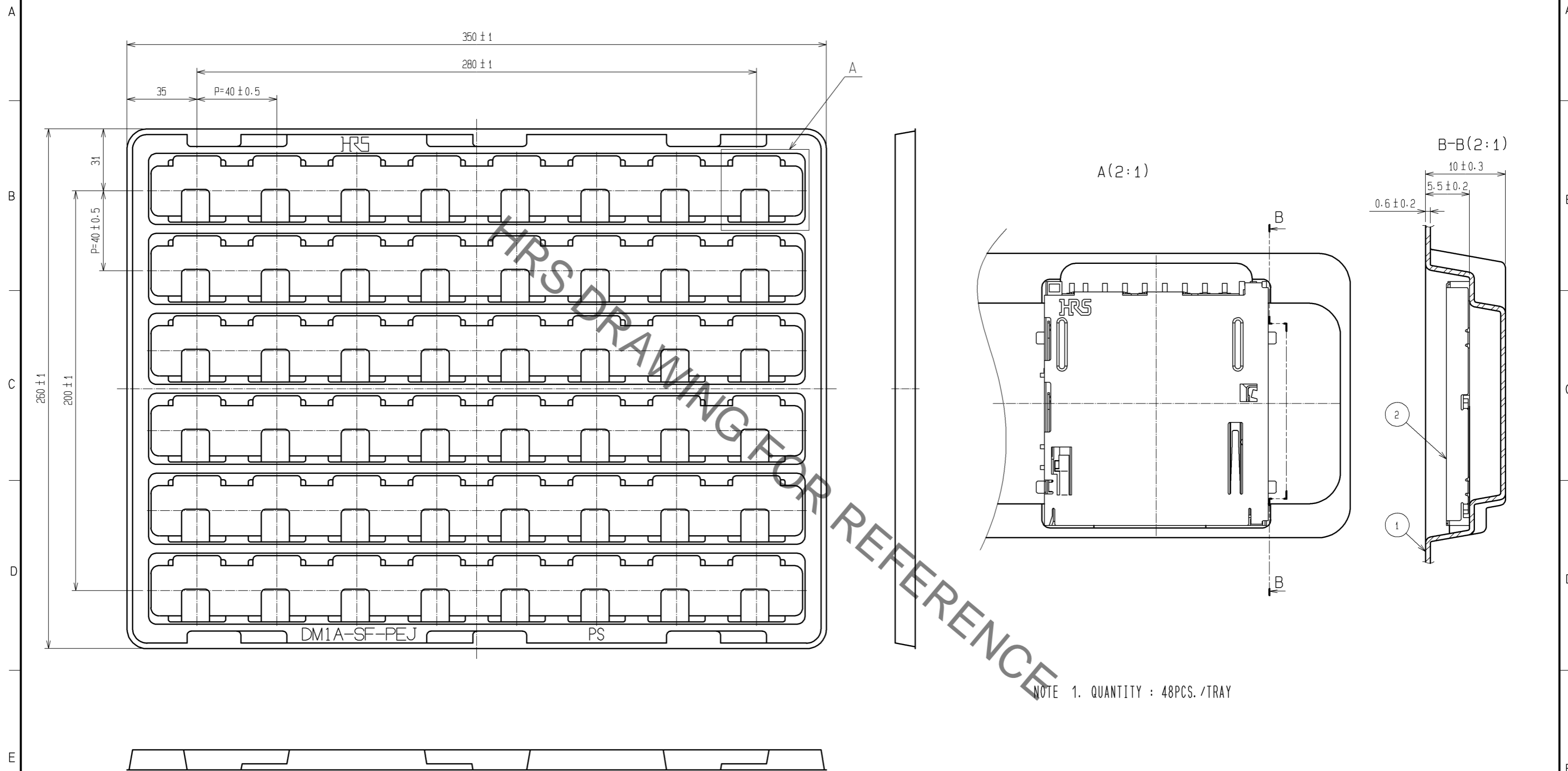
NOTES ① ϕ IS THE CENTERLINE OF THE CARD SLOT.
 ② CARD DETECTION PROCEDURE AND WP DETECTION PROCEDURE ARE SHOWN IN THE BELOW.

3 LEAD CO-PLANARITY TO BE 0.1mm.

3	STAINLESS STEEL	MOUNTING AREA : Ni0.5 μ m+Sn1 μ m	10	SWC	Ni3 μ m
2	COPPER ALLOY	CONTACT AREA : Ni2 μ m+Au0.2 μ m MOUNTING AREA : Ni2 μ m+Au0.03 μ m	7, 8, 9	STAINLESS STEEL	CONTACT AREA : Ni2 μ m+Au0.2 μ m MOUNTING AREA : Ni2 μ m+Au0.03 μ m
1	LCP	BLACK UL94V-0	5, 6	COPPER ALLOY	
NO.	MATERIAL	FINISH . REMARKS	NO.	MATERIAL	FINISH . REMARKS
UNITS mm		SCALE 2 : 1	COUNT 	DESCRIPTION OF REVISIONS	DESIGNED
HRS HIROSE ELECTRIC CO., LTD.		APPROVED : KI. AKIYAMA 09.09.15	DESIGNED : HT. SUGIMURA 09.09.14	DRAWING NO. EDC3-153736-07	CHECKED
		CHECKED : NH. SUGITA 09.09.15	DRAWN : CR. TAKESHIMA 09.09.14	PART NO. DM1AA-SF-PEJ(72)	DATE
				CODE NO. CL609-0004-8-72	

Sep.1.2019 Copyright 2019 HIROSE ELECTRIC CO., LTD. All Rights Reserved.
 In case of consideration for using Automotive equipment / device which demand high reliability, kindly contact our sales window correspondents.

CONFIGURATION OF PACKING TRAY



NOTE 1. QUANTITY : 48PCS./TRAY

2	CONNECTOR:DM1AA-SF-PEJ(72)
1	PS CLEAR
NO.	MATERIAL

HRS	DRAWING NO.	EDC3-153736-07	△ 2/2
	PART NO.	DM1AA-SF-PEJ(72)	
	CODE NO.	CL609-0004-8-72	