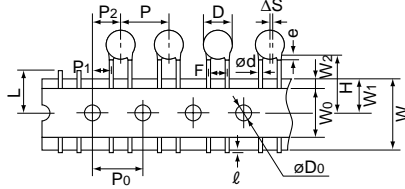
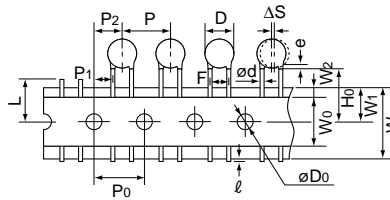


■ Taping Specifications

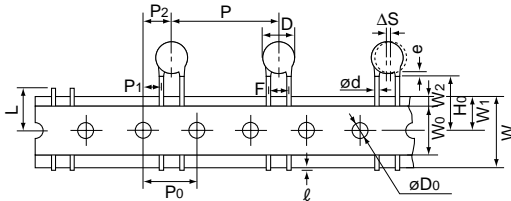
- 15.0mm pitch / lead spacing 7.5mm taping
Straight type
(Lead Code: P3)



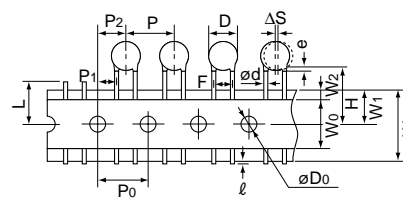
- 15.0mm pitch / lead spacing 7.5mm taping
Vertical crimp type
(Lead Code: N3)



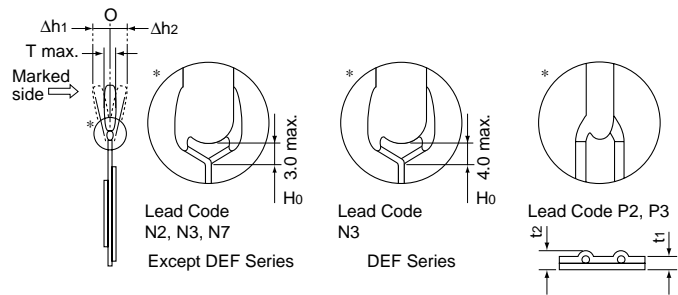
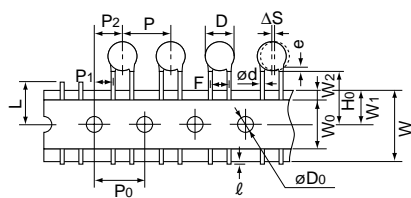
- 30.0mm pitch / lead spacing 7.5mm taping
Vertical crimp type
(Lead Code: N7)



- 12.7mm pitch / lead spacing 5.0mm taping
Straight type
(Lead Code: P2)



- 12.7mm pitch / lead spacing 5.0mm taping
Vertical crimp type
(Lead Code: N2)



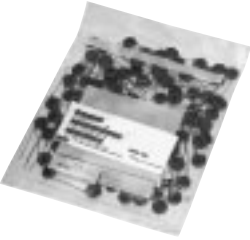

| Item | Code | P3 | N3 | N7 | P2 | N2 |
|---|------|--|------------------------------------|----------|--------------------------------------|------------------------------------|
| Pitch of component | P | 15.0±2.0 | | 30.0±2.0 | 12.7±1.0 | |
| Pitch of sprocket hole | P0 | 15.0±0.3 | | | 12.7±0.3 | |
| Lead spacing | F | 7.5±1.0 | | | 5.0 ^{+0.8} _{-0.2} | |
| Length from hole center to component center | P2 | 7.5±1.5 | | | 6.35±1.3 | |
| Length from hole center to lead | P1 | 3.75±1.0 | | | 3.85±0.7 | |
| Body diameter | D | See the individual product specifications. | | | | |
| Deviation along tape, left or right | ΔS | 0±2.0 | | | 0±1.0 | |
| Carrier tape width | W | 18.0±0.5 | | | | |
| Position of sprocket hole | W1 | 9.0±0.5 | | | | |
| Lead distance between reference and bottom planes | H | 20.0 ^{+1.5} _{-1.0} | — | | 20.0 ^{+1.5} _{-1.0} | — |
| | H0 | — | 18.0 ^{+2.0} ₋₀ | | — | 18.0 ^{+2.0} ₋₀ |
| Protrusion length | ℓ | +0.5 to -1.0 | | | | |
| Diameter of sprocket hole | φD0 | 4.0±0.1 | | | | |
| Lead diameter | φd | 0.6±0.05 | | | | |
| Total tape thickness | t1 | 0.6±0.3 | | | | |
| Total thickness, tape and lead wire | t2 | 1.5 max. | | | | |
| Body thickness | T | See the individual product specifications. | | | | |
| Portion to cut in case of defect | L | 11.0 ⁺⁰ _{-1.0} | | | | |
| Hold down tape width | W0 | 11.5 min. | | | | |
| Hold down tape position | W2 | 1.5±1.5 | | | | |
| Coating extension on lead | e | 3.0 max. (Vertical crimp type: Up to the end of crimp) | | | | |
| Deviation across tape, front | Δh1 | 2.0 max. | | | 1.0 max. | |
| Deviation across tape, rear | Δh2 | | | | | |

(in : mm)

Continued on the following page.

Continued from the preceding page.

■ Packaging Styles

| Bulk | Taping |
|---|--|
| Polyethylene Bag  | Ammo Pack  |

■ Minimum Quantity (Order in Sets Only)

| [Bulk] | | (pcs./Bag) | |
|--|------------------|------------------|----------------------|
| | Body Dia. D (mm) | Lead Code A□, C□ | Lead Code B□, D□, J□ |
| | | Long | Short |
| DES Series DEH Series DEA Series DEB Series | 4.5 to 6 | 500 | 500 |
| | 7 | 250 *1 | 500 |
| | 8 to 11 | 250 | 500 |
| | 12 | 200 *2 | 250 *3 |
| | 13, 14 | 200 | 250 |
| | 15 to 18 | 100 | 200 |
| DEC Series DEF Series | 19 to 21 | 50 | 100 |
| | 7 to 9 | 250 | 500 |
| | 10, 11 | 100 | — |
| | 12 to 15 | 100 | — |

*1 Lead Spacing F=5.0mm (Code: A2): 500pcs.

*2 Rated Voltage DC250V (Code: 2E), DC500V (Code: 2H): 250pcs.

*3 Rated Voltage DC250V (Code: 2E), DC500V (Code: 2H): 500pcs.

| [Taping] | | (pcs./Ammo Pack) | |
|------------|--------|------------------|-----|
| Lead Code | N2, P2 | N3, P3 | N7 |
| DES Series | 1,500 | 1,000 | 500 |
| DEH Series | 1,500 | 900 *4 | 500 |
| DEA Series | 1,500 | 900 *4 | 500 |
| DEB Series | 1,500 | 900 *4 | 500 |
| DEF Series | — | 900 | — |

*4 Rated Voltage DC1kV (Code: 3A): 1,000pcs.