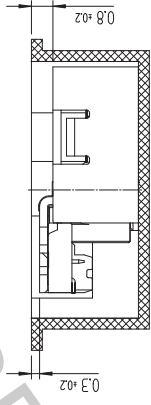
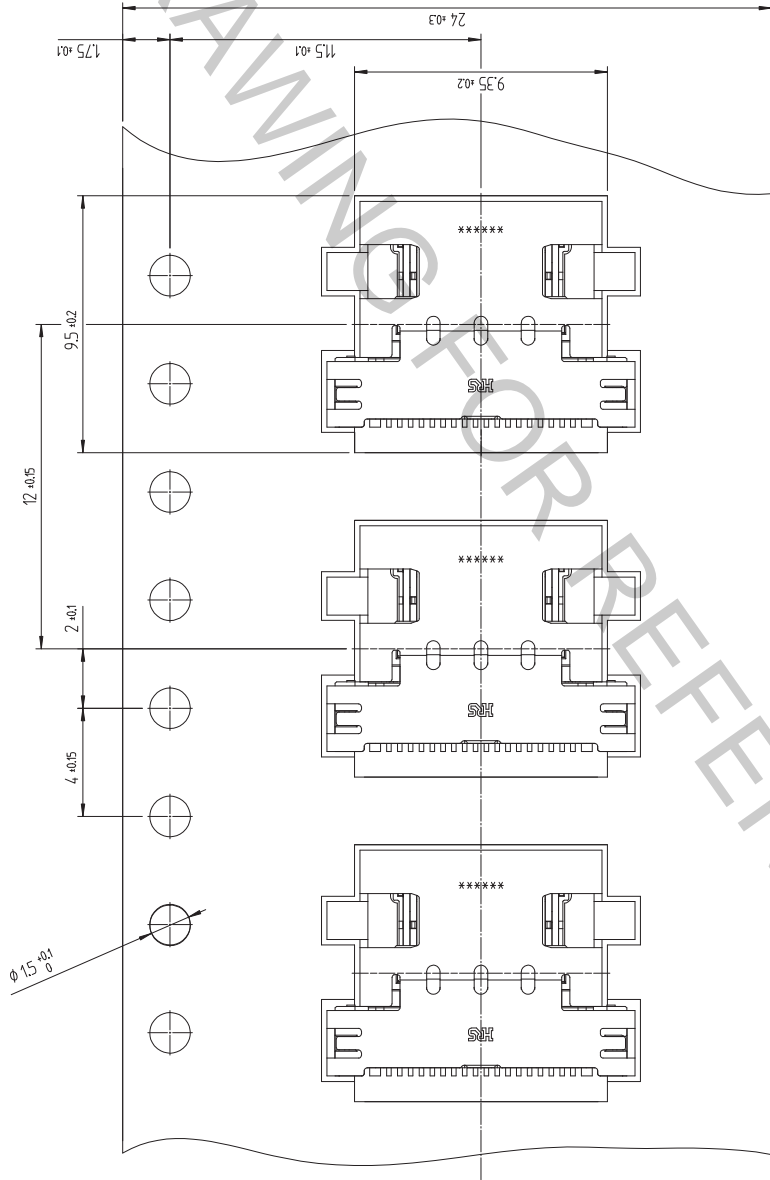
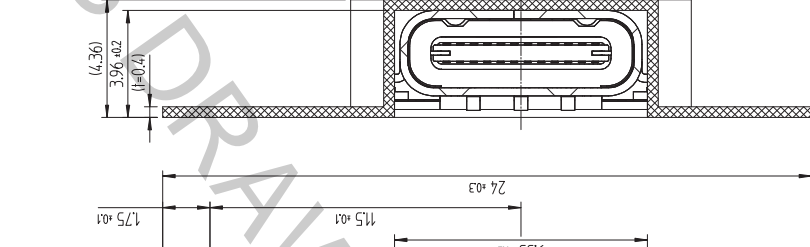
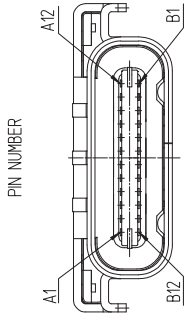
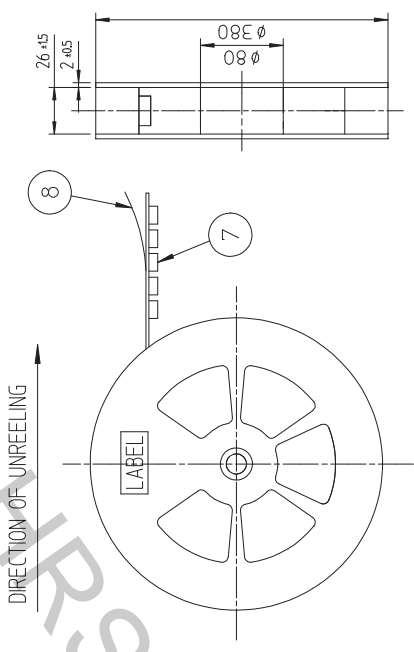




In case that the application demands a high level of reliability, such as automotive use, please contact a company representative for further information.

年 月 日 DATE	年 月 日 DATE	年 月 日 DATE	年 月 日 DATE
描 繪 者 DRAWN	檢 査 者 CHECKED	訂 正 者 REVISED	描 繪 者 DRAWN
△ 數 量 COUNT	△ 數 量 COUNT	△ 數 量 COUNT	△ 數 量 COUNT
△ 訂 正 項 目 DISCUSSION OF REVISIONS	△ 訂 正 項 目 DISCUSSION OF REVISIONS	△ 訂 正 項 目 DISCUSSION OF REVISIONS	△ 訂 正 項 目 DISCUSSION OF REVISIONS



A1	A2	A3	A4	A5	A6	A7	A8	A9	A10	A11	A12
GND	TX1+	TX1-	Vbus	CC1	D+	D-	SBU1	Vbus	RX2-	RX2+	GND
GND	RX1+	RX1-	Vbus	SBU2	D+	D-	CC2	Vbus	TX2-	TX2+	GND
B12	B11	B10	B9	B8	B7	B6	B5	B4	B3	B2	B1

4	STAINLESS STEEL	Ni-5	8	PS	COVER TAPE
3	COPPER ALLOY	Contact : Ni-5+Pd-Ni0.75Min+Au0.05Min Lead : Ni-5+Au0.05Min	7	PS	EMBOSS CARRIER TAPE
2	COPPER ALLOY	Contact : Ni-5+Pd-Ni0.75Min+Au0.05Min Lead : Ni-5+Au0.05Min	6	STAINLESS STEEL	Ni-5
1	LCP	UL94V-0,COLOR BLACK	5	STAINLESS STEEL	Other Ni-5 / LEAD Ni-5+Au 0.03Min
NO.	MATERIAL	FINISH/REMARKS	NO.	MATERIAL	FINISH/REMARKS

DESIGNED	CHECKED	APPROVED	RELEASED
CELJIM 15.09.04	HJLEE 15.09.04	T.SKANG 15.09.04	ENG 15.12.11 DEPT

DRAWING NO.	EDC3-611479	PART NO.	CX70M-24P1
SCALE	5:1	CODE NO	CL 6240-0002-1
UNITS	mm		

**DRAWING FOR REFERENCE**  
This is subject to change without notice