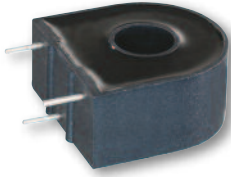


# Current Sense Transformers

## Low Frequency



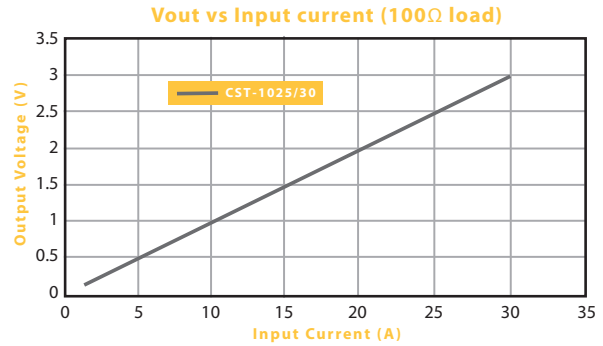
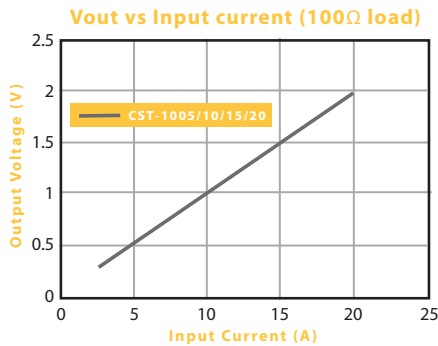
### :: CST Series Description

Triad current sense transformers are used to detect the current passing through a conductor. These transformers are very reliable and operate effectively between 50-60 Hz. They are constructed of UL rated 130°C materials.

### :: Specifications

Part No.	Ip Amps	Turns Ratio	Terminating Resistor		DCR (Ohms) Nominal	Volts/Amp @ rated Ip 100	Net Weight (grams) REF	Case Dimensions – mm					
			Ohms	Watt				A	B	C	D	E	F
CST-1005	5	1000:1	100	0.0025	40.00	0.0958	20.0	23.50	24.80	12.00	15.00	7.50	8.50
CST-1010	10	1000:1	100	0.0100	40.00	0.0969	20.0	23.50	24.80	12.00	15.00	7.50	8.50
CST-1015	15	1000:1	100	0.0230	40.00	0.0971	20.0	23.50	24.80	12.00	15.00	7.50	8.50
CST-1020	20	1000:1	100	0.0400	40.00	0.0977	20.0	23.50	24.80	12.00	15.00	7.50	8.50
CST-1025	25	1000:1	100	0.0630	46.00	0.0976	30.0	30.20	30.20	14.30	20.32	10.16	11.40
CST-1030	30	1000:1	100	0.0900	46.00	0.0977	30.0	30.20	30.20	14.30	20.32	10.16	11.40

Ip: Primary Current



### :: Outline Dimensions

#### Technical Notes

1. Pin length: 5 ±1mm
2. Pin diameter: 0.8 ±0.1mm
3. Pin 3 normally for mechanical support only
3. 4KV Dielectric

