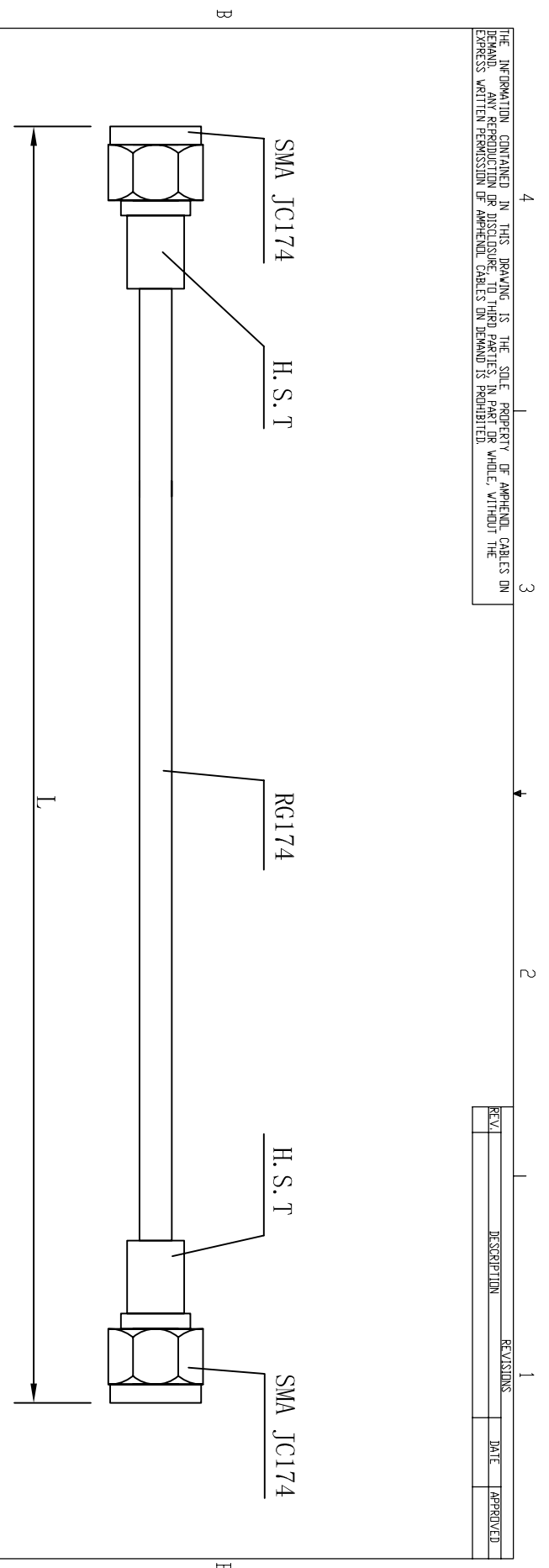


THE INFORMATION CONTAINED IN THIS DRAWING IS THE SOLE PROPERTY OF AMPHENOL CABLES ON DEMAND. ANY REPRODUCTION OR DISCLOSURE, IN PART OR WHOLE, WITHOUT THE EXPRESS WRITTEN PERMISSION OF AMPHENOL CABLES ON DEMAND IS PROHIBITED.

REV.	DESCRIPTION	REVISIONS	DATE	APPROVED



MATERIAL:  
 SMA: BODY: BRASS, GOLD-PLATED,  
 CENTER PIN: BRASS, GOLD-PLATED,  
 CABLE: RG174/U  
 THE TOLERANCE IS: <1000 ±5  
 >=1000 ±10

No.	ACD NO	L(mm)	TITLE
11	CO-174SMA200-010	3050	CA SMA M/SMA M RG174/U 10"
10	CO-174SMA200-007.5	2286	CA SMA M/SMA M RG174/U 7.5"
9	CO-174SMA200-005	1525	CA SMA M/SMA M RG174/U 5"
8	CO-174SMA200-004	1220	CA SMA M/SMA M RG174/U 4"
7	CO-174SMA200-003	915	CA SMA M/SMA M RG174/U 3"
6	CO-174SMA200-002.5	762	CA SMA M/SMA M RG174/U 2.5"
5	CO-174SMA200-002	610	CA SMA M/SMA M RG174/U 2"
4	CO-174SMA200-001.5	457	CA SMA M/SMA M RG174/U 1.5"
3	CO-174SMA200-001	305	CA SMA M/SMA M RG174/U 1"
2	CO-174SMA200-000.8	203	CA SMA M/SMA M RG174/U 8"
1	CO-174SMA200-000.6	152	CA SMA M/SMA M RG174/U 6"



NOTES: UNLESS OTHERWISE SPECIFIED

UNLESS OTHERWISE SPECIFIED		E&R N.D.	
DIMENSIONS ARE IN INCHES		TOLERANCES ARE:	
DECIMALS	ANGLES	APPROVALS	DATE
.X	± .X		2006-11-18
.XX	± .XX	CHECKED	
.XXX	± .XXX	RESP ENG	
		MFG ENG	
THIRD ANGLE PROJECTION		SIZE DWG. NO.	
		CO-174SMA200-XXX.X	
		REV.	

TWO IN-LINE SMA

Amphenol Cables on Demand  
 20 VALLEY ST. ENDICOTT, NY 13760