



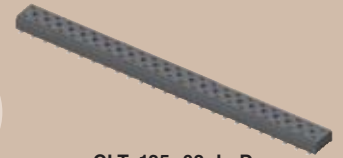
(2,00mm) .0787"

CLT SERIES

CLT-115-02-F-D-A-K-BE



CLT-105-02-F-D



CLT-125-02-L-D

LOW PROFILE DUAL WIPE SOCKET

SPECIFICATIONS

For complete specifications and recommended PCB layouts see www.samtec.com?CLT

Insulator Material: Black Liquid Crystal Polymer



Contact Material: Phosphor Bronze
Plating: Sn or Au over 50µ" (1,27µm) Ni
Current Rating: 3.3A @ 80°C ambient (6 contacts powered)

Operating Temp Range: -55°C to +125°C
Contact Resistance: 10 mΩ max

Insertion Depth:
 Top Entry= (1,40mm) .055" minimum
 Bottom Entry= (2,57mm) .101" minimum (add board thickness for correct post OAL)

Insertion Force: (Single contact only) 1.8oz (0,50N) avg.

Withdrawal Force: (Single contact only) .6oz (0,17N) avg.

Max Cycles: 100 with 10µ" (0,25µm) Au
RoHS Compliant: Yes

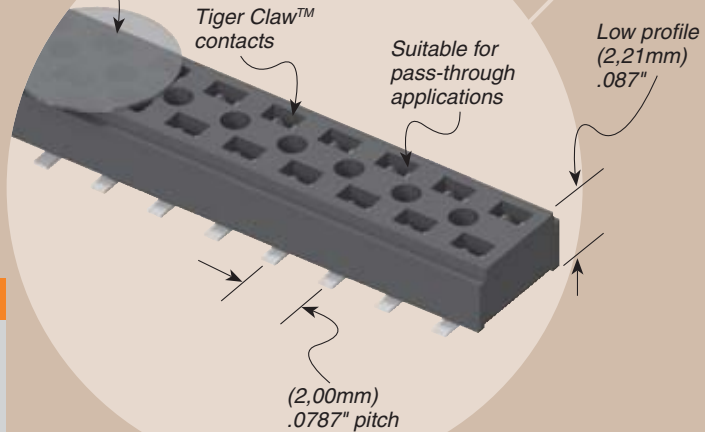
Processing: Lead-Free Solderable: Yes

SMT Lead Coplanarity: (0,10mm) .004" max (02-25) (0,15mm) .006" max (26-34) (0,20mm) .008" max (35-50)

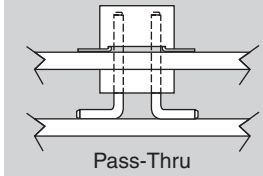
Mates with: TMM, TMMH, MTMM, MMT, TW



Available with optional Pick & Place Pads



APPLICATION



CLT	1	NO. PINS PER ROW	LEAD STYLE	PLATING OPTION	D	OTHER OPTIONS
-----	---	------------------	------------	----------------	---	---------------

02 thru 50

- 01 = Through-hole
- 02 = Surface Mount
- 03 = Through-hole

- F = Gold flash on contact, Matte Tin on tail
- L = 10µ" (0,25µm) Gold on contact, Matte Tin on tail
- G = 10µ" (0,25µm) Gold on contact, Gold flash on tail

- All options require Style -02
- BE = Bottom Entry (Required for bottom entry applications)
- A = Alignment Pin (3 positions minimum) Metal or plastic at Samtec's discretion
- K = (5,00mm) .197" DIA Polyimide Film Pick & Place Pad (04 thru 50 only)
- P = Pick & Place Pad (4 positions minimum) (Not always necessary for auto placement.)
- TR = Tape & Reel Packaging (36 positions max)

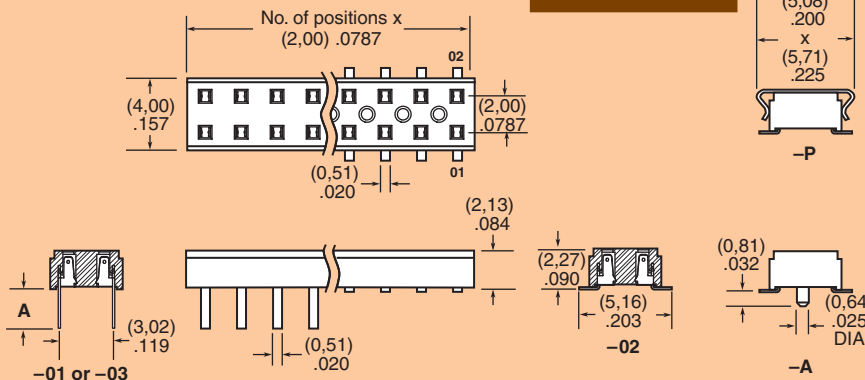
LEAD STYLE	A
-01	(2,16) .085
-03	(2,95) .116

TAPE & REEL AVAILABILITY

No tooling charges.
 Minimum order is the lesser of a full reel quantity or 125 pieces.
 Order any quantity above minimum.
 In-house design, manufacture.
 Quick turn-around.
 Call Samtec for specifications and ordering information.

Note: Other Gold plating options available. Contact Samtec.

Note: Some lengths, styles and options are non-standard, non-returnable.



Due to technical progress, all designs, specifications and components are subject to change without notice.

WWW.SAMTEC.COM