

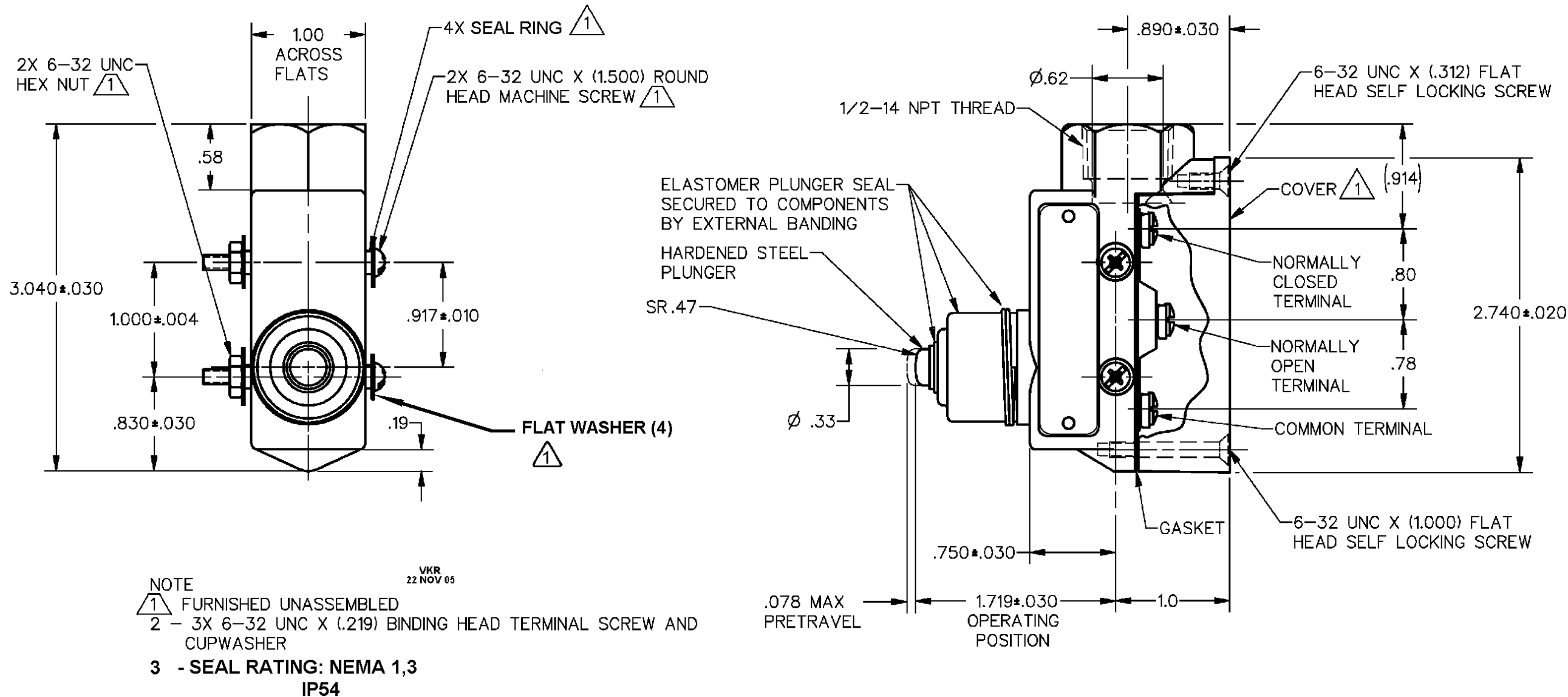
MICRO SWITCH
a Honeywell Division

SWITCH - ENCLOSED

CATALOG LISTING
BZE6-2RN

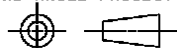
FED. MFG. CODE 91929

DDM/CAD
 DRAWN
 S A V 5 OCT 92
 CHECK
 BP 22 NOV 05
 CHECK
 5 OCT 92
 REVISIONS
 D 0017057
 K D R 17 FEB 94
 C 77179A
 S M 21 APR 93
 B 73655
 S A V 5 OCT 92
 A 73736
 CO-73736
 ISSUE
M
 12
 CATALOG LISTING
BZE6-2RN
 REPLACES
 RELEASE NO.



THIS DRAWING COVERS A PROPRIETARY ITEM AND IS THE PROPERTY OF MICRO SWITCH, A DIVISION OF HONEYWELL. THIS DRAWING IS NOT TO BE COPIED OR USED WITHOUT THE APPROVAL OF MICRO SWITCH

THIRD ANGLE PROJECTION



CHARACTERISTICS	ELECTRICAL DATA
OPERATING FORCE ———— 9-24 OZ	CONTACT ARRANGEMENT S P D T
RELEASE FORCE ———— 4 OZ MIN	L74 15A 125, 250 OR 480 VAC 2A 600 VAC
DIFFERENTIAL TRAVEL ——— .002 MAX	1/8HP 125 VAC, 1/4HP 250 VAC
OVERTRAVEL ———— .219 MIN	1/2A 125 VDC, 1/4A 250 VDC
BASIC SWITCH REPLACEMENT ——— BZ-2RQ77	CE 1.5A, 240 Vac

CHARACTERISTICS	ELECTRICAL DATA
OPERATING FORCE ———— 9-24 OZ	CONTACT ARRANGEMENT S P D T
RELEASE FORCE ———— 4 OZ MIN	L74 15A 125, 250 OR 480 VAC 2A 600 VAC
DIFFERENTIAL TRAVEL ——— .002 MAX	1/8HP 125 VAC, 1/4HP 250 VAC
OVERTRAVEL ———— .219 MIN	1/2A 125 VDC, 1/4A 250 VDC
BASIC SWITCH REPLACEMENT ——— BZ-2RQ77	CE 1.5A, 240 Vac

SCALE	TOLERANCES
FULL	UNLESS OTHERWISE SPECIFIED TOLERANCES ARE
DO NOT SCALE PRINT	ONE PLACE (.0) $\pm .030$
	TWO PLACE (.00) $\pm .015$
	THREE PLACE (.000) $\pm .005$
	ANGLES \pm
WEIGHT	.56 LB

ANSI Y14.5M-1982 APPLIES