

Panasonic
ideas for life

**VERSITILE
HIGH PERFORMANCE
MINIATURE SWITCHES**

**AH7 (NV)
SWITCHES**



FEATURES

- Extra long-life spring mechanism
—More than 10⁷ mechanical operations,
10⁵ electrical
- High contact rating of 15 Amps with
an operating force of only 200 g
- Safety insulation guard types
available
- Available in a wide operating force
and capacity range
- UL/CSA/VDE/SEMKO approved

**TYPICAL
APPLICATIONS**

- Home appliances
- Vending machines
- Amusement and communication
equipment
- Copiers
- General industrial machines

ORDERING INFORMATION

Ex. AH7

| Type of switch | Contact arrangement | Terminal | Actuators | Operating force by pin plunger (max.) | Agency standard | Contact |
|----------------|--|---|--|---------------------------------------|---|--|
| NV switch | 1: Bottom COM terminal SPDT 2: Bottom COM terminal SPST-NC 3: Bottom COM terminal SPST-NO 4: Side COM terminal SPDT 5: Side COM terminal SPST-NC 6: Side COM terminal SPST-NO | 2: Solder terminal without guard 5: .187 Quick-connect/solder terminal without guard 8: .250 Quick-connect terminal | 0: Pin plunger 1: Short hinge lever 2: Hinge lever 3: Long hinge lever 4: Simulated roller lever 5: Short roller lever 6: Roller lever | *1 | 9: UL/CSA 6 × 10 ³ rated 8: VDE/SEMKO (VDE is not available for Side COM terminal SPDT and Side COM terminal SPST-NO type.) | F: Cadmium free (F is required only for silver alloy contact type. F is not required for gold clad contact type as it is originally cadmium free.) |

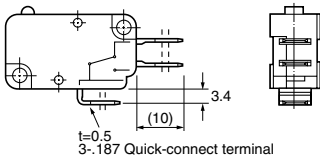
*1

| Type | | 0.49N | 0.98N | 1.96N | 2.94N | 3.92N | |
|---------------------|------------------|------------------------------------|-------|-------|-------|-------|-----|
| Heat Resistant type | Ag alloy contact | .187 Quick connect/solder terminal | 356 | 456 | 555 | 655 | 755 |
| | | Solder terminal | 356 | 456 | | | |
| | Au clad contact | .250 Quick connect terminal | — | — | 562 | — | — |
| Standard type | Ag alloy contact | .187 Quick connect/solder terminal | 362 | 462 | 5 | 6 | 7 |
| | | Solder terminal | 360 | 460 | | | |
| | Au clad contact | .250 Quick connect terminal | — | — | 561 | — | — |

TERMINALS

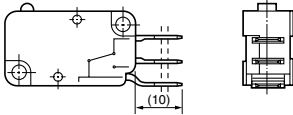
1. .187 Quick-connect/solder terminal

1) Bottom COM terminal

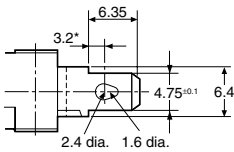


t=0.5
3-.187 Quick-connect terminal

2) Side COM terminal



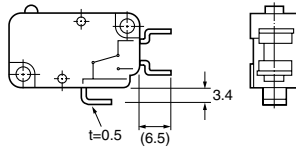
3) Terminal portion dimensions



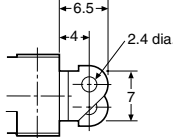
* Indicating for the center of 1.6 dia.

2. Solder terminal

1) Bottom COM terminal

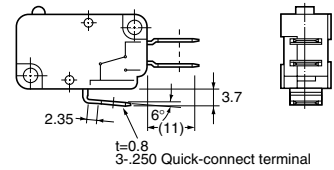


2) Terminal portion dimensions



3. .250 Quick-connect terminal

1) Bottom COM terminal



t=0.8
3-.250 Quick-connect terminal

2) Terminal portion dimensions

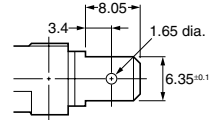


TABLE OF PRODUCT TYPES

| Types | Contact rating | Contact arrangement | | | Schematic | | Terminals | | | Operating force, max. | | | | |
|--|----------------|---------------------|---------|---------|-------------------------------------|-------------------------------|------------------------------------|-----------------|-----------------------------|-----------------------|-------|-------|-------|-------|
| | | SPDT | SPST-NC | SPST-NO | Bottom COM terminal (without guard) | Side terminal (without guard) | .187 Quick-connect/solder terminal | Solder terminal | .250 Quick-connect terminal | 0.49N | 0.98N | 1.96N | 2.94N | 3.92N |
| Heat resistant type | 15A 250V AC | ● | ● | ● | ● | ● | ● | ● | ● | — | — | ● | ● | ● |
| | 10A 250V AC | ● | ● | ● | ● | ● | ● | ● | ● | — | ● | — | — | — |
| | 5A 250V AC | ● | ● | ● | ● | ● | ● | ● | ● | ● | — | — | — | — |
| Heat resistant type (Low-level circuit type) | 3A 250V AC | ● | ● | ● | ● | ● | ● | — | — | ● | ● | ● | ● | ● |

AH7

PRODUCT TYPES

1. Heat resistant type (Ag alloy contact type)

.187 Quick-connect/solder terminal without guard

[SPDT type]

| Actuators | Operating force, max. | Bottom COM terminal | Side COM terminal |
|------------------------|-----------------------|---------------------|-------------------|
| Pin plunger | 0.49N | AH7150356*F | AH7450356*F |
| | 0.98N | AH7150456*F | AH7450456*F |
| | 1.96N | AH7150555*F | AH7450555*F |
| | 2.94N | AH7150655*F | AH7450655*F |
| | 3.92N | AH7150755*F | AH7450755*F |
| Short hinge lever | 0.59N | AH7151356*F | AH7451356*F |
| | 1.08N | AH7151456*F | AH7451456*F |
| | 2.16N | AH7151555*F | AH7451555*F |
| | 3.14N | AH7151655*F | AH7451655*F |
| | 4.12N | AH7151755*F | AH7451755*F |
| Hinge lever | 0.29N | AH7152356*F | AH7452356*F |
| | 0.59N | AH7152456*F | AH7452456*F |
| | 1.18N | AH7152555*F | AH7452555*F |
| | 1.77N | AH7152655*F | AH7452655*F |
| | 2.35N | AH7152755*F | AH7452755*F |
| Long hinge lever | 0.15N | AH7153356*F | AH7453356*F |
| | 0.29N | AH7153456*F | AH7453456*F |
| | 0.59N | AH7153555*F | AH7453555*F |
| | 0.88N | AH7153655*F | AH7453655*F |
| | 1.18N | AH7153755*F | AH7453755*F |
| Simulated roller lever | 0.29N | AH7154356*F | AH7454356*F |
| | 0.59N | AH7154456*F | AH7454456*F |
| | 1.18N | AH7154555*F | AH7454555*F |
| | 1.77N | AH7154655*F | AH7454655*F |
| | 2.35N | AH7154755*F | AH7454755*F |
| Short roller lever | 0.59N | AH7155356*F | AH7455356*F |
| | 1.08N | AH7155456*F | AH7455456*F |
| | 2.16N | AH7155555*F | AH7455555*F |
| | 3.14N | AH7155655*F | AH7455655*F |
| | 4.12N | AH7155755*F | AH7455755*F |
| Roller lever | 0.29N | AH7156356*F | AH7456356*F |
| | 0.59N | AH7156456*F | AH7456456*F |
| | 1.18N | AH7156555*F | AH7456555*F |
| | 1.77N | AH7156655*F | AH7456655*F |
| | 2.35N | AH7156755*F | AH7456755*F |

Remark:
When ordering solder terminal, change the fifth digit of part number from "5" to "2".
(ex.) AH7150555→AH7120555
*: When ordering international standard approved types, please insert following number to the * marked position
9: UL/CSA 6×10³ rated
8: VDE/SEMKO (VDE is not available for Side COM terminal SPDT and Side COM terminal SPST-NO type.)

[SPST-NC type]

| Actuators | Operating force, max. | Bottom COM terminal | Side COM terminal |
|------------------------|-----------------------|---------------------|-------------------|
| Pin plunger | 0.49N | AH7250356*F | AH7550356*F |
| | 0.98N | AH7250456*F | AH7550456*F |
| | 1.96N | AH7250555*F | AH7550555*F |
| | 2.94N | AH7250655*F | AH7550655*F |
| | 3.92N | AH7250755*F | AH7550755*F |
| Short hinge lever | 0.59N | AH7251356*F | AH7551356*F |
| | 1.08N | AH7251456*F | AH7551456*F |
| | 2.16N | AH7251555*F | AH7551555*F |
| | 3.14N | AH7251655*F | AH7551655*F |
| | 4.12N | AH7251755*F | AH7551755*F |
| Hinge lever | 0.29N | AH7252356*F | AH7552356*F |
| | 0.59N | AH7252456*F | AH7552456*F |
| | 1.18N | AH7252555*F | AH7552555*F |
| | 1.77N | AH7252655*F | AH7552655*F |
| | 2.35N | AH7252755*F | AH7552755*F |
| Long hinge lever | 0.15N | AH7253356*F | AH7553356*F |
| | 0.29N | AH7253456*F | AH7553456*F |
| | 0.59N | AH7253555*F | AH7553555*F |
| | 0.88N | AH7253655*F | AH7553655*F |
| | 1.18N | AH7253755*F | AH7553755*F |
| Simulated roller lever | 0.29N | AH7254356*F | AH7554356*F |
| | 0.59N | AH7254456*F | AH7554456*F |
| | 1.18N | AH7254555*F | AH7554555*F |
| | 1.77N | AH7254655*F | AH7554655*F |
| | 2.35N | AH7254755*F | AH7554755*F |
| Short roller lever | 0.59N | AH7255356*F | AH7555356*F |
| | 1.08N | AH7255456*F | AH7555456*F |
| | 2.16N | AH7255555*F | AH7555555*F |
| | 3.14N | AH7255655*F | AH7555655*F |
| | 4.12N | AH7255755*F | AH7555755*F |
| Roller lever | 0.29N | AH7256356*F | AH7556356*F |
| | 0.59N | AH7256456*F | AH7556456*F |
| | 1.18N | AH7256555*F | AH7556555*F |
| | 1.77N | AH7256655*F | AH7556655*F |
| | 2.35N | AH7256755*F | AH7556755*F |

Remark:
When ordering solder terminal, change the fifth digit of part number from "5" to "2".
(ex.) AH7150555→AH7120555
*: When ordering international standard approved types, please insert following number to the * marked position
9: UL/CSA 6×10³ rated
8: VDE/SEMKO (VDE is not available for Side COM terminal SPDT and Side COM terminal SPST-NO type.)

[SPST-NO type]

| Actuators | Operating force, max. | Bottom COM terminal | Side COM terminal |
|------------------------|-----------------------|---------------------|-------------------|
| Pin plunger | 0.49N | AH7350356*F | AH7650356*F |
| | 0.98N | AH7350456*F | AH7650456*F |
| | 1.96N | AH7350555*F | AH7650555*F |
| | 2.94N | AH7350655*F | AH7650655*F |
| | 3.92N | AH7350755*F | AH7650755*F |
| Short hinge lever | 0.59N | AH7351356*F | AH7651356*F |
| | 1.08N | AH7351456*F | AH7651456*F |
| | 2.16N | AH7351555*F | AH7651555*F |
| | 3.14N | AH7351655*F | AH7651655*F |
| | 4.12N | AH7351755*F | AH7651755*F |
| Hinge lever | 0.29N | AH7352356*F | AH7652356*F |
| | 0.59N | AH7352456*F | AH7652456*F |
| | 1.18N | AH7352555*F | AH7652555*F |
| | 1.77N | AH7352655*F | AH7652655*F |
| | 2.35N | AH7352755*F | AH7652755*F |
| Long hinge lever | 0.15N | AH7353356*F | AH7653356*F |
| | 0.29N | AH7353456*F | AH763456*F |
| | 0.59N | AH7353555*F | AH7653555*F |
| | 0.88N | AH7353655*F | AH7653655*F |
| | 1.18N | AH7353755*F | AH7653755*F |
| Simulated roller lever | 0.29N | AH7354356*F | AH7654356*F |
| | 0.59N | AH7354456*F | AH7654456*F |
| | 1.18N | AH7354555*F | AH7654555*F |
| | 1.77N | AH7354655*F | AH7654655*F |
| | 2.35N | AH7354755*F | AH7654755*F |
| Short roller lever | 0.59N | AH7355356*F | AH7655356*F |
| | 1.08N | AH7355456*F | AH7655456*F |
| | 2.16N | AH7355555*F | AH7655555*F |
| | 3.14N | AH7355655*F | AH7655655*F |
| | 4.12N | AH7355755*F | AH7655755*F |
| Roller lever | 0.29N | AH7356356*F | AH7656356*F |
| | 0.59N | AH7356456*F | AH7656456*F |
| | 1.18N | AH7356555*F | AH7656555*F |
| | 1.77N | AH7356655*F | AH7656655*F |
| | 2.35N | AH7356755*F | AH7656755*F |

Remark:

When ordering solder terminal, change the fifth digit of part number from "5" to "2".
(ex.) AH7150555→AH7120555

*: When ordering international standard approved types, please insert following number to the * marked position

9: UL/CSA 6×10³ rated

8: VDE/SEMKO (VDE is not available for Side COM terminal SPDT and Side COM terminal SPST-NO type.)

AH7

Solder terminal without guard [SPDT type]

| Actuators | Operating force, max. | Bottom COM terminal | Side COM terminal |
|------------------------|-----------------------|---------------------|-------------------|
| Pin plunger | 0.49N | AH7120356*F | AH7420356*F |
| | 0.98N | AH7120456*F | AH7420456*F |
| | 1.96N | AH7120555*F | AH7420555*F |
| | 2.94N | AH7120655*F | AH7420655*F |
| | 3.92N | AH7120755*F | AH7420755*F |
| Short hinge lever | 0.59N | AH7121356*F | AH7421356*F |
| | 1.08N | AH7121456*F | AH7421456*F |
| | 2.16N | AH7121555*F | AH7421555*F |
| | 3.14N | AH7121655*F | AH7421655*F |
| | 4.12N | AH7121755*F | AH7421755*F |
| Hinge lever | 0.29N | AH7122356*F | AH7422356*F |
| | 0.59N | AH7122456*F | AH7422456*F |
| | 1.18N | AH7122555*F | AH7422555*F |
| | 1.77N | AH7122655*F | AH7422655*F |
| | 2.35N | AH7122755*F | AH7422755*F |
| Long hinge lever | 0.15N | AH7123356*F | AH7423356*F |
| | 0.29N | AH7123456*F | AH7423456*F |
| | 0.59N | AH7123555*F | AH7423555*F |
| | 0.88N | AH7123655*F | AH7423655*F |
| | 1.18N | AH7123755*F | AH7423755*F |
| Simulated roller lever | 0.29N | AH7124356*F | AH7424356*F |
| | 0.59N | AH7124456*F | AH7424456*F |
| | 1.18N | AH7124555*F | AH7424555*F |
| | 1.77N | AH7124655*F | AH7424655*F |
| | 2.35N | AH7124755*F | AH7424755*F |
| Short roller lever | 0.59N | AH7125356*F | AH7425356*F |
| | 1.08N | AH7125456*F | AH7425456*F |
| | 2.16N | AH7125555*F | AH7425555*F |
| | 3.14N | AH7125655*F | AH7425655*F |
| | 4.12N | AH7125755*F | AH7425755*F |
| Roller lever | 0.29N | AH7126356*F | AH7426356*F |
| | 0.59N | AH7126456*F | AH7426456*F |
| | 1.18N | AH7126555*F | AH7426555*F |
| | 1.77N | AH7126655*F | AH7426655*F |
| | 2.35N | AH7126755*F | AH7426755*F |

Remark:
When ordering international standard approved types, please insert following number to the * marked position
9: UL/CSA 6×10³ rated
8: VDE/SEMKO (VDE is not available for Side COM terminal SPDT and Side COM terminal SPST-NO type.)

[SPST-NC type]

| Actuators | Operating force, max. | Bottom COM terminal | Side COM terminal |
|------------------------|-----------------------|---------------------|-------------------|
| Pin plunger | 0.49N | AH7220356*F | AH7520356*F |
| | 0.98N | AH7220456*F | AH7520456*F |
| | 1.96N | AH7220555*F | AH7520555*F |
| | 2.94N | AH7220655*F | AH7520655*F |
| | 3.92N | AH7220755*F | AH7520755*F |
| Short hinge lever | 0.59N | AH7221356*F | AH7521356*F |
| | 1.08N | AH7221456*F | AH7521456*F |
| | 2.16N | AH7221555*F | AH7521555*F |
| | 3.14N | AH7221655*F | AH7521655*F |
| | 4.12N | AH7221755*F | AH7521755*F |
| Hinge lever | 0.29N | AH7222356*F | AH7522356*F |
| | 0.59N | AH7222456*F | AH7522456*F |
| | 1.18N | AH7222555*F | AH7522555*F |
| | 1.77N | AH7222655*F | AH7522655*F |
| | 2.35N | AH7222755*F | AH7522755*F |
| Long hinge lever | 0.15N | AH7223356*F | AH7523356*F |
| | 0.29N | AH7223456*F | AH7523456*F |
| | 0.59N | AH7223555*F | AH7523555*F |
| | 0.88N | AH7223655*F | AH7523655*F |
| | 1.18N | AH7223755*F | AH7523755*F |
| Simulated roller lever | 0.29N | AH7224356*F | AH7524356*F |
| | 0.59N | AH7224456*F | AH7524456*F |
| | 1.18N | AH7224555*F | AH7524555*F |
| | 1.77N | AH7224655*F | AH7524655*F |
| | 2.35N | AH7224755*F | AH7524755*F |
| Short roller lever | 0.59N | AH7225356*F | AH7525356*F |
| | 1.08N | AH7225456*F | AH7525456*F |
| | 2.16N | AH7225555*F | AH7525555*F |
| | 3.14N | AH7225655*F | AH7525655*F |
| | 4.12N | AH7225755*F | AH7525755*F |
| Roller lever | 0.29N | AH7226356*F | AH7526356*F |
| | 0.59N | AH7226456*F | AH7526456*F |
| | 1.18N | AH7226555*F | AH7526555*F |
| | 1.77N | AH7226655*F | AH7526655*F |
| | 2.35N | AH7226755*F | AH7526755*F |

Remark:
When ordering international standard approved types, please insert following number to the * marked position
9: UL/CSA 6×10³ rated
8: VDE/SEMKO (VDE is not available for Side COM terminal SPDT and Side COM terminal SPST-NO type.)

[SPST-NO type]

| Actuators | Operating force, max. | Bottom COM terminal | Side COM terminal |
|------------------------|-----------------------|---------------------|-------------------|
| Pin plunger | 0.49N | AH7320356*F | AH7620356*F |
| | 0.98N | AH7320456*F | AH7620456*F |
| | 1.96N | AH7320555*F | AH7620555*F |
| | 2.94N | AH7320655*F | AH7620655*F |
| | 3.92N | AH7320755*F | AH7620755*F |
| Short hinge lever | 0.59N | AH7321356*F | AH7621356*F |
| | 1.08N | AH7321456*F | AH7621456*F |
| | 2.16N | AH7321555*F | AH7621555*F |
| | 3.14N | AH7321655*F | AH7621655*F |
| | 4.12N | AH7321755*F | AH7621755*F |
| Hinge lever | 0.29N | AH7322356*F | AH7622356*F |
| | 0.59N | AH7322456*F | AH7622456*F |
| | 1.18N | AH7322555*F | AH7622555*F |
| | 1.77N | AH7322655*F | AH7622655*F |
| | 2.35N | AH7322755*F | AH7622755*F |
| Long hinge lever | 0.15N | AH7323356*F | AH7623356*F |
| | 0.29N | AH7323456*F | AH7623456*F |
| | 0.59N | AH7323555*F | AH7623555*F |
| | 0.88N | AH7323655*F | AH7623655*F |
| | 1.18N | AH7323755*F | AH7623755*F |
| Simulated roller lever | 0.29N | AH7324356*F | AH7624356*F |
| | 0.59N | AH7324456*F | AH7624456*F |
| | 1.18N | AH7324555*F | AH7624555*F |
| | 1.77N | AH7324655*F | AH7624655*F |
| | 2.35N | AH7324755*F | AH7624755*F |
| Short roller lever | 0.59N | AH7325356*F | AH7625356*F |
| | 1.08N | AH7325456*F | AH7625456*F |
| | 2.16N | AH7325555*F | AH7625555*F |
| | 3.14N | AH7325655*F | AH7625655*F |
| | 4.12N | AH7325755*F | AH7625755*F |
| Roller lever | 0.29N | AH7326356*F | AH7626356*F |
| | 0.59N | AH7326456*F | AH7626456*F |
| | 1.18N | AH7326555*F | AH7626555*F |
| | 1.77N | AH7326655*F | AH7626655*F |
| | 2.35N | AH7326755*F | AH7626755*F |

Remark:

When ordering international standard approved types, please insert following number to the * marked position

9: UL/CSA 6x10³ rated

8: VDE/SEMKO (VDE is not available for Side COM terminal SPDT and Side COM terminal SPST-NO type.)

AH7

.250 Quick-connect terminal [SPDT type]

| Actuators | Operating force, max. | Bottom COM terminal | Side COM terminal |
|------------------------|-----------------------|---------------------|-------------------|
| Pin plunger | 1.96N | AH7180555*F | AH7480555*F |
| | 2.94N | AH7180655*F | AH7480655*F |
| | 3.92N | AH7180755*F | AH7480755*F |
| Short hinge lever | 2.16N | AH7181555*F | AH7481555*F |
| | 3.14N | AH7181655*F | AH7481655*F |
| | 4.12N | AH7181755*F | AH7481755*F |
| Hinge lever | 1.18N | AH7182555*F | AH7482555*F |
| | 1.77N | AH7182655*F | AH7482655*F |
| | 2.35N | AH7182755*F | AH7482755*F |
| Long hinge lever | 0.59N | AH7183555*F | AH7483555*F |
| | 0.88N | AH7183655*F | AH7483655*F |
| | 1.18N | AH7183755*F | AH7483755*F |
| Simulated roller lever | 1.18N | AH7184555*F | AH7484555*F |
| | 1.77N | AH7184655*F | AH7484655*F |
| | 2.35N | AH7184755*F | AH7484755*F |
| Short roller lever | 2.16N | AH7185555*F | AH7485555*F |
| | 3.14N | AH7185655*F | AH7485655*F |
| | 4.12N | AH7185755*F | AH7485755*F |
| Roller lever | 1.18N | AH7186555*F | AH7486555*F |
| | 1.77N | AH7186655*F | AH7486655*F |
| | 2.35N | AH7186755*F | AH7486755*F |

Remark:
When ordering international standard approved types, please insert following number to the * marked position
9: UL/CSA 6×10³ rated
8: VDE/SEMKO (VDE is not available for Side COM terminal SPDT and Side COM terminal SPST-NO type.)

[SPST-NC type]

| Actuators | Operating force, max. | Bottom COM terminal | Side COM terminal |
|------------------------|-----------------------|---------------------|-------------------|
| Pin plunger | 1.96N | AH7280555*F | AH7580555*F |
| | 2.94N | AH7280655*F | AH7580655*F |
| | 3.92N | AH7280755*F | AH7580755*F |
| Short hinge lever | 2.16N | AH7281555*F | AH7581555*F |
| | 3.14N | AH7281655*F | AH7581655*F |
| | 4.12N | AH7281755*F | AH7581755*F |
| Hinge lever | 1.18N | AH7282555*F | AH7582555*F |
| | 1.77N | AH7282655*F | AH7582655*F |
| | 2.35N | AH7282755*F | AH7582755*F |
| Long hinge lever | 0.59N | AH7283555*F | AH7583555*F |
| | 0.88N | AH7283655*F | AH7583655*F |
| | 1.18N | AH7283755*F | AH7583755*F |
| Simulated roller lever | 1.18N | AH7284555*F | AH7584555*F |
| | 1.77N | AH7284655*F | AH7584655*F |
| | 2.35N | AH7284755*F | AH7584755*F |
| Short roller lever | 2.16N | AH7285555*F | AH7585555*F |
| | 3.14N | AH7285655*F | AH7585655*F |
| | 4.12N | AH7285755*F | AH7585755*F |
| Roller lever | 1.18N | AH7286555*F | AH7586555*F |
| | 1.77N | AH7286655*F | AH7586655*F |
| | 2.35N | AH7286755*F | AH7586755*F |

Remark:
When ordering international standard approved types, please insert following number to the * marked position
9: UL/CSA 6×10³ rated
8: VDE/SEMKO (VDE is not available for Side COM terminal SPDT and Side COM terminal SPST-NO type.)

[SPST-NO type]

| Actuators | Operating force, max. | Bottom COM terminal | Side COM terminal |
|------------------------|-----------------------|---------------------|-------------------|
| Pin plunger | 1.96N | AH7380555*F | AH7680555*F |
| | 2.94N | AH7380655*F | AH7680655*F |
| | 3.92N | AH7380755*F | AH7680755*F |
| Short hinge lever | 2.16N | AH7381555*F | AH7681555*F |
| | 3.14N | AH7381655*F | AH7681655*F |
| | 4.12N | AH7381755*F | AH7681755*F |
| Hinge lever | 1.18N | AH7382555*F | AH7682555*F |
| | 1.77N | AH7382655*F | AH7682655*F |
| | 2.35N | AH7382755*F | AH7682755*F |
| Long hinge lever | 0.59N | AH7383555*F | AH7683555*F |
| | 0.88N | AH7383655*F | AH7683655*F |
| | 1.18N | AH7383755*F | AH7683755*F |
| Simulated roller lever | 1.18N | AH7384555*F | AH7684555*F |
| | 1.77N | AH7384655*F | AH7684655*F |
| | 2.35N | AH7384755*F | AH7684755*F |
| Short roller lever | 2.16N | AH7385555*F | AH7685555*F |
| | 3.14N | AH7385655*F | AH7685655*F |
| | 4.12N | AH7385755*F | AH7685755*F |
| Roller lever | 1.18N | AH7386555*F | AH7686555*F |
| | 1.77N | AH7386655*F | AH7686655*F |
| | 2.35N | AH7386755*F | AH7686755*F |

Remark:
When ordering international standard approved types, please insert following number to the * marked position
9: UL/CSA 6×10³ rated
8: VDE/SEMKO (VDE is not available for Side COM terminal SPDT and Side COM terminal SPST-NO type.)

2. Heat resistant type (Au clad contact type)

.187 Quick-connect/solder terminal without guard
[SPDT type]

| Actuators | Operating force, max. | Bottom COM terminal | Side COM terminal |
|------------------------|-----------------------|---------------------|-------------------|
| Pin plunger | 0.49N | AH7150362* | AH7450362* |
| | 0.98N | AH7150462* | AH7450462* |
| | 1.96N | AH7150562* | AH7450562* |
| Short hinge lever | 0.59N | AH7151362* | AH7451362* |
| | 1.08N | AH7151462* | AH7451462* |
| | 2.16N | AH7151562* | AH7451562* |
| Hinge lever | 0.29N | AH7152362* | AH7452362* |
| | 0.59N | AH7152462* | AH7452462* |
| | 1.18N | AH7152562* | AH7452562* |
| Long hinge lever | 0.15N | AH7153362* | AH7453362* |
| | 0.29N | AH7153462* | AH7453462* |
| | 0.59N | AH7153562* | AH7453562* |
| Simulated roller lever | 0.29N | AH7154362* | AH7454362* |
| | 0.59N | AH7154462* | AH7454462* |
| | 1.18N | AH7154562* | AH7454562* |
| Short roller lever | 0.59N | AH7155362* | AH7455362* |
| | 1.08N | AH7155462* | AH7455462* |
| | 2.16N | AH7155562* | AH7455562* |
| Roller lever | 0.29N | AH7156362* | AH7456362* |
| | 0.59N | AH7156462* | AH7456462* |
| | 1.18N | AH7156562* | AH7456562* |

Remark:

*: When ordering international standard approved types, please insert following number to the * marked position
9: UL/CSA 6×10³ rated
8: VDE/SEMKO (VDE is not available for Side COM terminal SPDT and Side COM terminal SPST-NO type.)

[SPST-NC type]

| Actuators | Operating force, max. | Bottom COM terminal | Side COM terminal |
|------------------------|-----------------------|---------------------|-------------------|
| Pin plunger | 0.49N | AH7250362* | AH7550362* |
| | 0.98N | AH7250462* | AH7550462* |
| | 1.96N | AH7250562* | AH7550562* |
| Short hinge lever | 0.59N | AH7251362* | AH7551362* |
| | 1.08N | AH7251462* | AH7551462* |
| | 2.16N | AH7251562* | AH7551562* |
| Hinge lever | 0.29N | AH7252362* | AH7552362* |
| | 0.59N | AH7252462* | AH7552462* |
| | 1.18N | AH7252562* | AH7552562* |
| Long hinge lever | 0.15N | AH7253362* | AH7553362* |
| | 0.29N | AH7253462* | AH7553462* |
| | 0.59N | AH7253562* | AH7553562* |
| Simulated roller lever | 0.29N | AH7254362* | AH7554362* |
| | 0.59N | AH7254462* | AH7554462* |
| | 1.18N | AH7254562* | AH7554562* |
| Short roller lever | 0.59N | AH7255362* | AH7555362* |
| | 1.08N | AH7255462* | AH7555462* |
| | 2.16N | AH7255562* | AH7555562* |
| Roller lever | 0.29N | AH7256362* | AH7556362* |
| | 0.59N | AH7256462* | AH7556462* |
| | 1.18N | AH7256562* | AH7556562* |

Remark:

*: When ordering international standard approved types, please insert following number to the * marked position
9: UL/CSA 6×10³ rated
8: VDE/SEMKO (VDE is not available for Side COM terminal SPDT and Side COM terminal SPST-NO type.)

[SPST-NO type]

| Actuators | Operating force, max. | Bottom COM terminal | Side COM terminal |
|------------------------|-----------------------|---------------------|-------------------|
| Pin plunger | 0.49N | AH7350362* | AH7650362* |
| | 0.98N | AH7350462* | AH7650462* |
| | 1.96N | AH7350562* | AH7650562* |
| Short hinge lever | 0.59N | AH7351362* | AH7651362* |
| | 1.08N | AH7351462* | AH7651462* |
| | 2.16N | AH7351562* | AH7651562* |
| Hinge lever | 0.29N | AH7352362* | AH7652362* |
| | 0.59N | AH7352462* | AH7652462* |
| | 1.18N | AH7352562* | AH7652562* |
| Long hinge lever | 0.15N | AH7353362* | AH7653362* |
| | 0.29N | AH7353462* | AH7653462* |
| | 0.59N | AH7353562* | AH7653562* |
| Simulated roller lever | 0.29N | AH7354362* | AH7654362* |
| | 0.59N | AH7354462* | AH7654462* |
| | 1.18N | AH7354562* | AH7654562* |
| Short roller lever | 0.59N | AH7355362* | AH7655362* |
| | 1.08N | AH7355462* | AH7655462* |
| | 2.16N | AH7355562* | AH7655562* |
| Roller lever | 0.29N | AH7356362* | AH7656362* |
| | 0.59N | AH7356462* | AH7656462* |
| | 1.18N | AH7356562* | AH7656562* |

Remark:

*: When ordering international standard approved types, please insert following number to the * marked position
9: UL/CSA 6×10³ rated
8: VDE/SEMKO (VDE is not available for Side COM terminal SPDT and Side COM terminal SPST-NO type.)

AH7

3. Standard type (Ag alloy contact type)

.187 Quick-connect/solder terminal without guard
[SPDT type]

| Actuators | Operating force, max. | Bottom COM terminal | Side COM terminal |
|------------------------|-----------------------|---------------------|-------------------|
| Pin plunger | 0.49N | AH7150360*F | AH7450360*F |
| | 0.98N | AH7150460*F | AH7450460*F |
| | 1.96N | AH71505*F | AH74505*F |
| | 2.94N | AH71506*F | AH74506*F |
| | 3.92N | AH71507*F | AH74507*F |
| Short hinge lever | 0.59N | AH7151360*F | AH7451360*F |
| | 1.08N | AH7151460*F | AH7451460*F |
| | 2.16N | AH71515*F | AH74515*F |
| | 3.14N | AH71516*F | AH74516*F |
| | 4.12N | AH71517*F | AH74517*F |
| Hinge lever | 0.29N | AH7152360*F | AH7452360*F |
| | 0.59N | AH7152460*F | AH7452460*F |
| | 1.18N | AH71525*F | AH74525*F |
| | 1.77N | AH71526*F | AH74526*F |
| | 2.35N | AH71527*F | AH74527*F |
| Long hinge lever | 0.15N | AH7153360*F | AH7453360*F |
| | 0.29N | AH7153460*F | AH7453460*F |
| | 0.59N | AH71535*F | AH74535*F |
| | 0.88N | AH71536*F | AH74536*F |
| | 1.18N | AH71537*F | AH74537*F |
| Simulated roller lever | 0.29N | AH7154360*F | AH7454360*F |
| | 0.59N | AH7154460*F | AH7454460*F |
| | 1.18N | AH71545*F | AH74545*F |
| | 1.77N | AH71546*F | AH74546*F |
| | 2.35N | AH71547*F | AH74547*F |
| Short roller lever | 0.59N | AH7155360*F | AH7455360*F |
| | 1.08N | AH7155460*F | AH7455460*F |
| | 2.16N | AH71555*F | AH74555*F |
| | 3.14N | AH71556*F | AH74556*F |
| | 4.12N | AH71557*F | AH74557*F |
| Roller lever | 0.29N | AH7156360*F | AH7456360*F |
| | 0.59N | AH7156460*F | AH7456460*F |
| | 1.18N | AH71565*F | AH74565*F |
| | 1.77N | AH71566*F | AH74566*F |
| | 2.35N | AH71567*F | AH74567*F |

Remark:
When ordering solder terminal, change the fifth digit of part number from "5" to "2".
(ex.) AH7150555→AH7120555
*: When ordering international standard approved types, please insert following number to the * marked position
9: UL/CSA 6×10³ rated
8: VDE/SEMKO (VDE is not available for Side COM terminal SPDT and Side COM terminal SPST-NO type.)

[SPST-NC type]

| Actuators | Operating force, max. | Bottom COM terminal | Side COM terminal |
|------------------------|-----------------------|---------------------|-------------------|
| Pin plunger | 0.49N | AH7250360*F | AH7550360*F |
| | 0.98N | AH7250460*F | AH7550460*F |
| | 1.96N | AH72505*F | AH75505*F |
| | 2.94N | AH72506*F | AH75506*F |
| | 3.92N | AH72507*F | AH75507*F |
| Short hinge lever | 0.59N | AH7251360*F | AH7551360*F |
| | 1.08N | AH7251460*F | AH7551460*F |
| | 2.16N | AH72515*F | AH75515*F |
| | 3.14N | AH72516*F | AH75516*F |
| | 4.12N | AH72517*F | AH75517*F |
| Hinge lever | 0.29N | AH7252360*F | AH7552360*F |
| | 0.59N | AH7252460*F | AH7552460*F |
| | 1.18N | AH72525*F | AH75525*F |
| | 1.77N | AH72526*F | AH75526*F |
| | 2.35N | AH72527*F | AH75527*F |
| Long hinge lever | 0.15N | AH7253360*F | AH7553360*F |
| | 0.29N | AH7253460*F | AH7553460*F |
| | 0.59N | AH72535*F | AH75535*F |
| | 0.88N | AH72536*F | AH75536*F |
| | 1.18N | AH72537*F | AH75537*F |
| Simulated roller lever | 0.29N | AH7254360*F | AH7554360*F |
| | 0.59N | AH7254460*F | AH7554460*F |
| | 1.18N | AH72545*F | AH75545*F |
| | 1.77N | AH72546*F | AH75546*F |
| | 2.35N | AH72547*F | AH75547*F |
| Short roller lever | 0.59N | AH7255360*F | AH7555360*F |
| | 1.08N | AH7255460*F | AH7555460*F |
| | 2.16N | AH72555*F | AH75555*F |
| | 3.14N | AH72556*F | AH75556*F |
| | 4.12N | AH72557*F | AH75557*F |
| Roller lever | 0.29N | AH7256360*F | AH7556360*F |
| | 0.59N | AH7256460*F | AH7556460*F |
| | 1.18N | AH72565*F | AH75565*F |
| | 1.77N | AH72566*F | AH75566*F |
| | 2.35N | AH72567*F | AH75567*F |

Remark:
When ordering solder terminal, change the fifth digit of part number from "5" to "2".
(ex.) AH7150555→AH7120555
*: When ordering international standard approved types, please insert following number to the * marked position
9: UL/CSA 6×10³ rated
8: VDE/SEMKO (VDE is not available for Side COM terminal SPDT and Side COM terminal SPST-NO type.)

[SPST-NO type]

| Actuators | Operating force, max. | Bottom COM terminal | Side COM terminal |
|------------------------|-----------------------|---------------------|-------------------|
| Pin plunger | 0.49N | AH7350360*F | AH7650360*F |
| | 0.98N | AH7350460*F | AH7650460*F |
| | 1.96N | AH73505*F | AH76505*F |
| | 2.94N | AH73506*F | AH76506*F |
| | 3.92N | AH73507*F | AH76507*F |
| Short hinge lever | 0.59N | AH7351360*F | AH7651360*F |
| | 1.08N | AH7351460*F | AH7651460*F |
| | 2.16N | AH73515*F | AH76515*F |
| | 3.14N | AH73516*F | AH76516*F |
| | 4.12N | AH73517*F | AH76517*F |
| Hinge lever | 0.29N | AH7352360*F | AH7652360*F |
| | 0.59N | AH7352460*F | AH7652460*F |
| | 1.18N | AH73525*F | AH76525*F |
| | 1.77N | AH73526*F | AH76526*F |
| | 2.35N | AH73527*F | AH76527*F |
| Long hinge lever | 0.15N | AH7353360*F | AH7653360*F |
| | 0.29N | AH7353460*F | AH763460*F |
| | 0.59N | AH73535*F | AH76535*F |
| | 0.88N | AH73536*F | AH76536*F |
| | 1.18N | AH73537*F | AH76537*F |
| Simulated roller lever | 0.29N | AH7354360*F | AH7654360*F |
| | 0.59N | AH7354460*F | AH7654460*F |
| | 1.18N | AH73545*F | AH76545*F |
| | 1.77N | AH73546*F | AH76546*F |
| | 2.35N | AH73547*F | AH76547*F |
| Short roller lever | 0.59N | AH7355360*F | AH7655360*F |
| | 1.08N | AH7355460*F | AH7655460*F |
| | 2.16N | AH73555*F | AH76555*F |
| | 3.14N | AH73556*F | AH76556*F |
| | 4.12N | AH73557*F | AH76557*F |
| Roller lever | 0.29N | AH7356360*F | AH7656360*F |
| | 0.59N | AH7356460*F | AH7656460*F |
| | 1.18N | AH73565*F | AH76565*F |
| | 1.77N | AH73566*F | AH76566*F |
| | 2.35N | AH73567*F | AH76567*F |

Remark:

When ordering solder terminal, change the fifth digit of part number from "5" to "2".
(ex.) AH7150555→AH7120555

*: When ordering international standard approved types, please insert following number to the * marked position

9: UL/CSA 6×10³ rated

8: VDE/SEMKO (VDE is not available for Side COM terminal SPDT and Side COM terminal SPST-NO type.)

AH7

Solder terminal without guard

[SPDT type]

| Actuators | Operating force, max. | Bottom COM terminal | Side COM terminal |
|------------------------|-----------------------|---------------------|-------------------|
| Pin plunger | 0.49N | AH7120360*F | AH7420360*F |
| | 0.98N | AH7120460*F | AH7420460*F |
| | 1.96N | AH71205*F | AH74205*F |
| | 2.94N | AH71206*F | AH74206*F |
| | 3.92N | AH71207*F | AH74207*F |
| Short hinge lever | 0.59N | AH7121360*F | AH7421360*F |
| | 1.08N | AH7121460*F | AH7421460*F |
| | 2.16N | AH71215*F | AH74215*F |
| | 3.14N | AH71216*F | AH74216*F |
| | 4.12N | AH71217*F | AH74217*F |
| Hinge lever | 0.29N | AH7122360*F | AH7422360*F |
| | 0.59N | AH7122460*F | AH7422460*F |
| | 1.18N | AH71225*F | AH74225*F |
| | 1.77N | AH71226*F | AH74226*F |
| | 2.35N | AH71227*F | AH74227*F |
| Long hinge lever | 0.15N | AH7123360*F | AH7423360*F |
| | 0.29N | AH7123460*F | AH7423460*F |
| | 0.59N | AH71235*F | AH74235*F |
| | 0.88N | AH71236*F | AH74236*F |
| | 1.18N | AH71237*F | AH74237*F |
| Simulated roller lever | 0.29N | AH7124360*F | AH7424360*F |
| | 0.59N | AH7124460*F | AH7424460*F |
| | 1.18N | AH71245*F | AH74245*F |
| | 1.77N | AH71246*F | AH74246*F |
| | 2.35N | AH71247*F | AH74247*F |
| Short roller lever | 0.59N | AH7125360*F | AH7425360*F |
| | 1.08N | AH7125460*F | AH7425460*F |
| | 2.16N | AH71255*F | AH74255*F |
| | 3.14N | AH71256*F | AH74256*F |
| | 4.12N | AH71257*F | AH74257*F |
| Roller lever | 0.29N | AH7126360*F | AH7426360*F |
| | 0.59N | AH7126460*F | AH7426460*F |
| | 1.18N | AH71265*F | AH74265*F |
| | 1.77N | AH71266*F | AH74266*F |
| | 2.35N | AH71267*F | AH74267*F |

Remark:
 When ordering international standard approved types, please insert following number to the * marked position
 9: UL/CSA 6×10³ rated
 8: VDE/SEMKO (VDE is not available for Side COM terminal SPDT and Side COM terminal SPST-NO type.)

[SPST-NC type]

| Actuators | Operating force, max. | Bottom COM terminal | Side COM terminal |
|------------------------|-----------------------|---------------------|-------------------|
| Pin plunger | 0.49N | AH7220360*F | AH7520360*F |
| | 0.98N | AH7220460*F | AH7520460*F |
| | 1.96N | AH72205*F | AH75205*F |
| | 2.94N | AH72206*F | AH75206*F |
| | 3.92N | AH72207*F | AH75207*F |
| Short hinge lever | 0.59N | AH7221360*F | AH7521360*F |
| | 1.08N | AH7221460*F | AH7521460*F |
| | 2.16N | AH72215*F | AH75215*F |
| | 3.14N | AH72216*F | AH75216*F |
| | 4.12N | AH72217*F | AH75217*F |
| Hinge lever | 0.29N | AH7222360*F | AH7522360*F |
| | 0.59N | AH7222460*F | AH7522460*F |
| | 1.18N | AH72225*F | AH75225*F |
| | 1.77N | AH72226*F | AH75226*F |
| | 2.35N | AH72227*F | AH75227*F |
| Long hinge lever | 0.15N | AH7223360*F | AH7523360*F |
| | 0.29N | AH7223460*F | AH7523460*F |
| | 0.59N | AH72235*F | AH75235*F |
| | 0.88N | AH72236*F | AH75236*F |
| | 1.18N | AH72237*F | AH75237*F |
| Simulated roller lever | 0.29N | AH7224360*F | AH7524360*F |
| | 0.59N | AH7224460*F | AH7524460*F |
| | 1.18N | AH72245*F | AH75245*F |
| | 1.77N | AH72246*F | AH75246*F |
| | 2.35N | AH72247*F | AH75247*F |
| Short roller lever | 0.59N | AH7225360*F | AH7525360*F |
| | 1.08N | AH7225460*F | AH7525460*F |
| | 2.16N | AH72255*F | AH75255*F |
| | 3.14N | AH72256*F | AH75256*F |
| | 4.12N | AH72257*F | AH75257*F |
| Roller lever | 0.29N | AH7226360*F | AH7526360*F |
| | 0.59N | AH7226460*F | AH7526460*F |
| | 1.18N | AH72265*F | AH75265*F |
| | 1.77N | AH72266*F | AH75266*F |
| | 2.35N | AH72267*F | AH75267*F |

Remark:
 When ordering international standard approved types, please insert following number to the * marked position
 9: UL/CSA 6×10³ rated
 8: VDE/SEMKO (VDE is not available for Side COM terminal SPDT and Side COM terminal SPST-NO type.)

[SPST-NO type]

| Actuators | Operating force, max. | Bottom COM terminal | Side COM terminal |
|------------------------|-----------------------|---------------------|-------------------|
| Pin plunger | 0.49N | AH7320360°F | AH7620360°F |
| | 0.98N | AH7320460°F | AH7620460°F |
| | 1.96N | AH73205°F | AH76205°F |
| | 2.94N | AH73206°F | AH76206°F |
| | 3.92N | AH73207°F | AH76207°F |
| Short hinge lever | 0.59N | AH7321360°F | AH7621360°F |
| | 1.08N | AH7321460°F | AH7621460°F |
| | 2.16N | AH73215°F | AH76215°F |
| | 3.14N | AH73216°F | AH76216°F |
| | 4.12N | AH73217°F | AH76217°F |
| Hinge lever | 0.29N | AH7322360°F | AH7622360°F |
| | 0.59N | AH7322460°F | AH7622460°F |
| | 1.18N | AH73225°F | AH76225°F |
| | 1.77N | AH73226°F | AH76226°F |
| | 2.35N | AH73227°F | AH76227°F |
| Long hinge lever | 0.15N | AH7323360°F | AH7623360°F |
| | 0.29N | AH7323460°F | AH7623460°F |
| | 0.59N | AH73235°F | AH76235°F |
| | 0.88N | AH73236°F | AH76236°F |
| | 1.18N | AH73237°F | AH76237°F |
| Simulated roller lever | 0.29N | AH7324360°F | AH7624360°F |
| | 0.59N | AH7324460°F | AH7624460°F |
| | 1.18N | AH73245°F | AH76245°F |
| | 1.77N | AH73246°F | AH76246°F |
| | 2.35N | AH73247°F | AH76247°F |
| Short roller lever | 0.59N | AH7325360°F | AH7625360°F |
| | 1.08N | AH7325460°F | AH7625460°F |
| | 2.16N | AH73255°F | AH76255°F |
| | 3.14N | AH73256°F | AH76256°F |
| | 4.12N | AH73257°F | AH76257°F |
| Roller lever | 0.29N | AH7326360°F | AH7626360°F |
| | 0.59N | AH7326460°F | AH7626460°F |
| | 1.18N | AH73265°F | AH76265°F |
| | 1.77N | AH73266°F | AH76266°F |
| | 2.35N | AH73267°F | AH76267°F |

Remark:

When ordering international standard approved types, please insert following number to the * marked position

9: UL/CSA 6x10³ rated

8: VDE/SEMKO (VDE is not available for Side COM terminal SPDT and Side COM terminal SPST-NO type.)

AH7

.250 Quick-connect terminal [SPDT type]

| Actuators | Operating force, max. | Bottom COM terminal | Side COM terminal |
|------------------------|-----------------------|---------------------|-------------------|
| Pin plunger | 1.96N | AH71805*F | AH74805*F |
| | 2.94N | AH71806*F | AH74806*F |
| | 3.92N | AH71807*F | AH74807*F |
| Short hinge lever | 2.16N | AH71815*F | AH74815*F |
| | 3.14N | AH71816*F | AH74816*F |
| | 4.12N | AH71817*F | AH74817*F |
| Hinge lever | 1.18N | AH71825*F | AH74825*F |
| | 1.77N | AH71826*F | AH74826*F |
| | 2.35N | AH71827*F | AH74827*F |
| Long hinge lever | 0.59N | AH71835*F | AH74835*F |
| | 0.88N | AH71836*F | AH74836*F |
| | 1.18N | AH71837*F | AH74837*F |
| Simulated roller lever | 1.18N | AH71845*F | AH74845*F |
| | 1.77N | AH71846*F | AH74846*F |
| | 2.35N | AH71847*F | AH74847*F |
| Short roller lever | 2.16N | AH71855*F | AH74855*F |
| | 3.14N | AH71856*F | AH74856*F |
| | 4.12N | AH71857*F | AH74857*F |
| Roller lever | 1.18N | AH71865*F | AH74865*F |
| | 1.77N | AH71866*F | AH74866*F |
| | 2.35N | AH71867*F | AH74867*F |

Remark:
When ordering international standard approved types, please insert following number to the * marked position
9: UL/CSA 6×10³ rated
8: VDE/SEMKO (VDE is not available for Side COM terminal SPDT and Side COM terminal SPST-NO type.)

[SPST-NC type]

| Actuators | Operating force, max. | Bottom COM terminal | Side COM terminal |
|------------------------|-----------------------|---------------------|-------------------|
| Pin plunger | 1.96N | AH72805*F | AH75805*F |
| | 2.94N | AH72806*F | AH75806*F |
| | 3.92N | AH72807*F | AH75807*F |
| Short hinge lever | 2.16N | AH72815*F | AH75815*F |
| | 3.14N | AH72816*F | AH75816*F |
| | 4.12N | AH72817*F | AH75817*F |
| Hinge lever | 1.18N | AH72825*F | AH75825*F |
| | 1.77N | AH72826*F | AH75826*F |
| | 2.35N | AH72827*F | AH75827*F |
| Long hinge lever | 0.59N | AH72835*F | AH75835*F |
| | 0.88N | AH72836*F | AH75836*F |
| | 1.18N | AH72837*F | AH75837*F |
| Simulated roller lever | 1.18N | AH72845*F | AH75845*F |
| | 1.77N | AH72846*F | AH75846*F |
| | 2.35N | AH72847*F | AH75847*F |
| Short roller lever | 2.16N | AH72855*F | AH75855*F |
| | 3.14N | AH72856*F | AH75856*F |
| | 4.12N | AH72857*F | AH75857*F |
| Roller lever | 1.18N | AH72865*F | AH75865*F |
| | 1.77N | AH72866*F | AH75866*F |
| | 2.35N | AH72867*F | AH75867*F |

Remark:
When ordering international standard approved types, please insert following number to the * marked position
9: UL/CSA 6×10³ rated
8: VDE/SEMKO (VDE is not available for Side COM terminal SPDT and Side COM terminal SPST-NO type.)

[SPST-NO type]

| Actuators | Operating force, max. | Bottom COM terminal | Side COM terminal |
|------------------------|-----------------------|---------------------|-------------------|
| Pin plunger | 1.96N | AH73805*F | AH76805*F |
| | 2.94N | AH73806*F | AH76806*F |
| | 3.92N | AH73807*F | AH76807*F |
| Short hinge lever | 2.16N | AH73815*F | AH76815*F |
| | 3.14N | AH73816*F | AH76816*F |
| | 4.12N | AH73817*F | AH76817*F |
| Hinge lever | 1.18N | AH73825*F | AH76825*F |
| | 1.77N | AH73826*F | AH76826*F |
| | 2.35N | AH73827*F | AH76827*F |
| Long hinge lever | 0.59N | AH73835*F | AH76835*F |
| | 0.88N | AH73836*F | AH76836*F |
| | 1.18N | AH73837*F | AH76837*F |
| Simulated roller lever | 1.18N | AH73845*F | AH76845*F |
| | 1.77N | AH73846*F | AH76846*F |
| | 2.35N | AH73847*F | AH76847*F |
| Short roller lever | 2.16N | AH73855*F | AH76855*F |
| | 3.14N | AH73856*F | AH76856*F |
| | 4.12N | AH73857*F | AH76857*F |
| Roller lever | 1.18N | AH73865*F | AH76865*F |
| | 1.77N | AH73866*F | AH76866*F |
| | 2.35N | AH73867*F | AH76867*F |

Remark:
When ordering international standard approved types, please insert following number to the * marked position
9: UL/CSA 6×10³ rated
8: VDE/SEMKO (VDE is not available for Side COM terminal SPDT and Side COM terminal SPST-NO type.)

4. Standard type (Au clad contact type)

.187 Quick-connect/solder terminal without guard

[SPDT type]

| Actuators | Operating force, max. | Bottom COM terminal | Side COM terminal |
|------------------------|-----------------------|---------------------|-------------------|
| Pin plunger | 0.49N | AH7150361* | AH7450361* |
| | 0.98N | AH7150461* | AH7450461* |
| | 1.96N | AH7150561* | AH7450561* |
| Short hinge lever | 0.59N | AH7151361* | AH7451361* |
| | 1.08N | AH7151461* | AH7451461* |
| | 2.16N | AH7151561* | AH7451561* |
| Hinge lever | 0.29N | AH7152361* | AH7452361* |
| | 0.59N | AH7152461* | AH7452461* |
| | 1.18N | AH7152561* | AH7452561* |
| Long hinge lever | 0.15N | AH7153361* | AH7453361* |
| | 0.29N | AH7153461* | AH7453461* |
| | 0.59N | AH7153561* | AH7453561* |
| Simulated roller lever | 0.29N | AH7154361* | AH7454361* |
| | 0.59N | AH7154461* | AH7454461* |
| | 1.18N | AH7154561* | AH7454561* |
| Short roller lever | 0.59N | AH7155361* | AH7455361* |
| | 1.08N | AH7155461* | AH7455461* |
| | 2.16N | AH7155561* | AH7455561* |
| Roller lever | 0.29N | AH7156361* | AH7456361* |
| | 0.59N | AH7156461* | AH7456461* |
| | 1.18N | AH7156561* | AH7456561* |

Remark:

*: When ordering international standard approved types, please insert following number to the * marked position

9: UL/CSA 6×10³ rated

8: VDE/SEMKO (VDE is not available for Side COM terminal SPDT and Side COM terminal SPST-NO type.)

[SPST-NC type]

| Actuators | Operating force, max. | Bottom COM terminal | Side COM terminal |
|------------------------|-----------------------|---------------------|-------------------|
| Pin plunger | 0.49N | AH7250361* | AH7550361* |
| | 0.98N | AH7250461* | AH7550461* |
| | 1.96N | AH7250561* | AH7550561* |
| Short hinge lever | 0.59N | AH7251361* | AH7551361* |
| | 1.08N | AH7251461* | AH7551461* |
| | 2.16N | AH7251561* | AH7551561* |
| Hinge lever | 0.29N | AH7252361* | AH7552361* |
| | 0.59N | AH7252461* | AH7552461* |
| | 1.18N | AH7252561* | AH7552561* |
| Long hinge lever | 0.15N | AH7253361* | AH7553361* |
| | 0.29N | AH7253461* | AH7553461* |
| | 0.59N | AH7253561* | AH7553561* |
| Simulated roller lever | 0.29N | AH7254361* | AH7554361* |
| | 0.59N | AH7254461* | AH7554461* |
| | 1.18N | AH7254561* | AH7554561* |
| Short roller lever | 0.59N | AH7255361* | AH7555361* |
| | 1.08N | AH7255461* | AH7555461* |
| | 2.16N | AH7255561* | AH7555561* |
| Roller lever | 0.29N | AH7256361* | AH7556361* |
| | 0.59N | AH7256461* | AH7556461* |
| | 1.18N | AH7256561* | AH7556561* |

Remark:

*: When ordering international standard approved types, please insert following number to the * marked position

9: UL/CSA 6×10³ rated

8: VDE/SEMKO (VDE is not available for Side COM terminal SPDT and Side COM terminal SPST-NO type.)

[SPST-NO type]

| Actuators | Operating force, max. | Bottom COM terminal | Side COM terminal |
|------------------------|-----------------------|---------------------|-------------------|
| Pin plunger | 0.49N | AH7350361* | AH7650361* |
| | 0.98N | AH7350461* | AH7650461* |
| | 1.96N | AH7350561* | AH7650561* |
| Short hinge lever | 0.59N | AH7351361* | AH7651361* |
| | 1.08N | AH7351461* | AH7651461* |
| | 2.16N | AH7351561* | AH7651561* |
| Hinge lever | 0.29N | AH7352361* | AH7652361* |
| | 0.59N | AH7352461* | AH7652461* |
| | 1.18N | AH7352561* | AH7652561* |
| Long hinge lever | 0.15N | AH7353361* | AH7653361* |
| | 0.29N | AH7353461* | AH763461* |
| | 0.59N | AH7353561* | AH7653561* |
| Simulated roller lever | 0.29N | AH7354361* | AH7654361* |
| | 0.59N | AH7354461* | AH7654461* |
| | 1.18N | AH7354561* | AH7654561* |
| Short roller lever | 0.59N | AH7355361* | AH7655361* |
| | 1.08N | AH7355461* | AH7655461* |
| | 2.16N | AH7355561* | AH7655561* |
| Roller lever | 0.29N | AH7356361* | AH7656361* |
| | 0.59N | AH7356461* | AH7656461* |
| | 1.18N | AH7356561* | AH7656561* |

Remark:

*: When ordering international standard approved types, please insert following number to the * marked position

9: UL/CSA 6×10³ rated

8: VDE/SEMKO (VDE is not available for Side COM terminal SPDT and Side COM terminal SPST-NO type.)

AH7

SPECIFICATIONS

1. Contact rating

| Contact | Operating force by pin plunger (max.) | Rating (resistive load) |
|---|---------------------------------------|---------------------------|
| Movable contact: AgSnO ₂ alloy Stational contact: AgZnO alloy | 0.49N | 5A 250V AC, 0.5A 125V DC |
| | 0.98N | 10A 250V AC, 0.6A 125V DC |
| | 1.96N, 3.92N | 15A 250V AC, 0.6A 125V DC |
| AgNi alloy + Au clad | 0.49 to 1.96N | 3A 250V AC |

- Gold clad low level circuit type (resistive load)

Minimum load:

6V DC 5mA

12V DC 2mA

24V DC 1mA

2. Characteristics

| Contact | | Movable contact: AgSnO ₂ alloy Stational contact: AgZnO alloy | | | AgNi alloy + Au clad | | | | |
|--|---|---|---------------------|---------------------|---|---|---------------------|---------------------|-------|
| Operating force by pin plunger (max.) | | 0.49N | 0.98N | 1.96N, 2.94N, 3.92N | — | — | 0.49N | 0.98N | 1.96N |
| Expected life (min.) | Mechanical (at O.T. rated) | Min. 10 ⁷ (at 60 cpm) | | | | | | | |
| | Electrical (at O.T. min.) | Min. 10 ⁵ (at rated load, 20 cpm) | | | | | | | |
| Insulation resistance (min.) | | Min. 100MΩ (at 500V DC) | | | | | | | |
| Dielectric strength | Between terminals | 1,000V AC for 1min. | | | | | | | |
| | Between terminals and other exposed metal parts | 1,500V AC for 1min. | | | | | | | |
| | Between terminals and ground | 1,500V AC for 1min. | | | | | | | |
| Contact resistance (Initial) | | Max. 50mΩ (by voltage drop at 1A 6 to 8V DC) | | | Max. 50 mΩ (by voltage drop at 0.1A 6 to 8V DC) | | | | |
| Vibration resistance (by pin plunger types) | | 10 to 55 Hz at amplitude of 0.75mm (Contact opening: max. 1msec.) | | | | | | | |
| Shock resistance (by pin plunger types) Min. | | 98m/s ² | 196m/s ² | 294m/s ² | 98m/s ² | | 196m/s ² | 294m/s ² | |
| Allowable operating speed | | 0.1 to 1,000mm/sec. | | | | | | | |
| Max. operating cycle rate | | 600/min. | | | | | | | |
| Ambient temperature | | -25°C to +120°C (No freezing below 0°C) | | | | | | | |
| Unit weight | | 8g | | | | | | | |

3. Operating characteristics

1) Pin plunger

mm

| Fifth digit of part number | O.F. max. | R.F. min. | P.T. max. | M.D. max. | O.T. min. | O.P. max. |
|----------------------------|-----------|-----------|-----------|-----------|-----------|-----------|
| 1 | — | — | — | — | — | — |
| 2 | — | — | — | — | — | — |
| 3 | 0.49N | 0.12N | 1.6 | 0.4 | 0.8 | 14.7±0.6 |
| 4 | 0.98N | 0.25N | 1.6 | 0.4 | 0.8 | 14.7±0.6 |
| 5 | 1.96N | 0.49N | 1.6 | 0.4 | 0.8 | 14.7±0.6 |
| 6 | 2.94N | 0.74N | 1.6 | 0.4 | 0.8 | 14.7±0.6 |
| 7 | 3.92N | 0.98N | 1.6 | 0.4 | 0.8 | 14.7±0.6 |

2) Short hinge lever

| Fifth digit of part number | O.F. max. | R.F. min. | P.T. max. | M.D. max. | O.T. min. | O.P. max. |
|----------------------------|-----------|-----------|-----------|-----------|-----------|-----------|
| 3 | 0.59N | 0.098N | 1.6 | 0.5 | 0.8 | 15.3±0.8 |
| 4 | 1.08N | 0.20N | 1.6 | 0.5 | 0.8 | 15.3±0.8 |
| 5 | 2.16N | 0.39N | 1.6 | 0.5 | 0.8 | 15.3±0.8 |
| 6 | 3.14N | 0.59N | 1.6 | 0.5 | 0.8 | 15.3±0.8 |
| 7 | 4.12N | 0.78N | 1.6 | 0.5 | 0.8 | 15.3±0.8 |

3) Hinge lever

| Fifth digit of part number | O.F. max. | R.F. min. | P.T. max. | M.D. max. | O.T. min. | O.P. max. |
|----------------------------|-----------|-----------|-----------|-----------|-----------|-----------|
| 3 | 0.29N | 0.049N | 3.2 | 1.2 | 1.2 | 15.3±1.2 |
| 4 | 0.59N | 0.098N | 3.2 | 1.2 | 1.2 | 15.3±1.2 |
| 5 | 1.18N | 0.20N | 3.2 | 1.2 | 1.2 | 15.3±1.2 |
| 6 | 1.77N | 0.29N | 3.2 | 1.2 | 1.2 | 15.3±1.2 |
| 7 | 2.35N | 0.39N | 3.2 | 1.2 | 1.2 | 15.3±1.2 |

4) Long hinge lever

| Fifth digit of part number | O.F. max. | R.F. min. | P.T. max. | M.D. max. | O.T. min. | O.P. max. |
|----------------------------|-----------|-----------|-----------|-----------|-----------|-----------|
| 3 | 0.15N | 0.025N | 7.5 | 2.2 | 2.2 | 15.3±2.6 |
| 4 | 0.29N | 0.049N | 7.5 | 2.2 | 2.2 | 15.3±2.6 |
| 5 | 0.59N | 0.098N | 7.5 | 2.2 | 2.2 | 15.3±2.6 |
| 6 | 0.88N | 0.15N | 7.5 | 2.2 | 2.2 | 15.3±2.6 |
| 7 | 1.18N | 0.39N | 7.5 | 2.2 | 2.2 | 15.3±2.6 |

5) Simulated roller lever

| Fifth digit of part number | O.F. max. | R.F. min. | P.T. max. | M.D. max. | O.T. min. | O.P. max. |
|----------------------------|-----------|-----------|-----------|-----------|-----------|-----------|
| 3 | 0.29N | 0.049N | 3.2 | 1.2 | 1.2 | 18.5±1.2 |
| 4 | 0.59N | 0.098N | 3.2 | 1.2 | 1.2 | 18.5±1.2 |
| 5 | 1.18N | 0.20N | 3.2 | 1.2 | 1.2 | 18.5±1.2 |
| 6 | 1.77N | 0.29N | 3.2 | 1.2 | 1.2 | 18.5±1.2 |
| 7 | 2.35N | 0.39N | 3.2 | 1.2 | 1.2 | 18.5±1.2 |

6) Short roller lever

| Fifth digit of part number | O.F. max. | R.F. min. | P.T. max. | M.D. max. | O.T. min. | O.P. max. |
|----------------------------|-----------|-----------|-----------|-----------|-----------|-----------|
| 3 | 0.59N | 0.098N | 1.6 | 0.5 | 0.8 | 20.7±0.8 |
| 4 | 1.08N | 0.20N | 1.6 | 0.5 | 0.8 | 20.7±0.8 |
| 5 | 2.16N | 0.39N | 1.6 | 0.5 | 0.8 | 20.7±0.8 |
| 6 | 3.14N | 0.59N | 1.6 | 0.5 | 0.8 | 20.7±0.8 |
| 7 | 4.12N | 0.78N | 1.6 | 0.5 | 0.8 | 20.7±0.8 |

7) Roller lever

| Fifth digit of part number | O.F. max. | R.F. min. | P.T. max. | M.D. max. | O.T. min. | O.P. max. |
|----------------------------|-----------|-----------|-----------|-----------|-----------|-----------|
| 3 | 0.29N | 0.049N | 3.2 | 1.2 | 1.2 | 20.7±1.2 |
| 4 | 0.59N | 0.098N | 3.2 | 1.2 | 1.2 | 20.7±1.2 |
| 5 | 1.18N | 0.20N | 3.2 | 1.2 | 1.2 | 20.7±1.2 |
| 6 | 1.77N | 0.29N | 3.2 | 1.2 | 1.2 | 20.7±1.2 |
| 7 | 2.35N | 0.39N | 3.2 | 1.2 | 1.2 | 20.7±1.2 |

DIMENSIONS

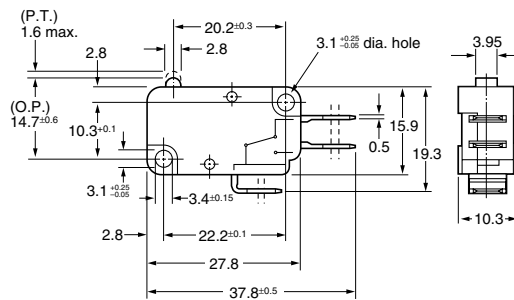
mm

1. Pin plunger

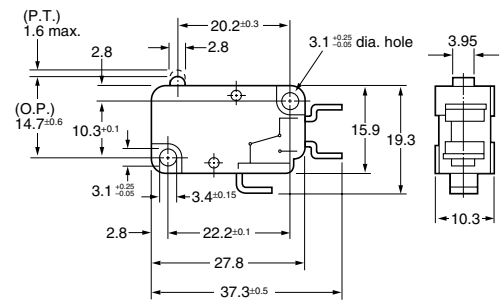
Bottom COM terminal (Guardless)



.187 Quick-connect/Solder terminal



Solder terminal



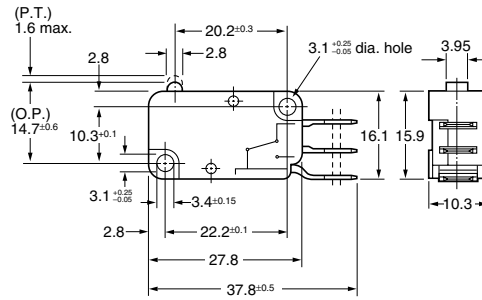
AH7

Side COM terminal (with right-hand guard)
 Side COM terminal (Guardless)

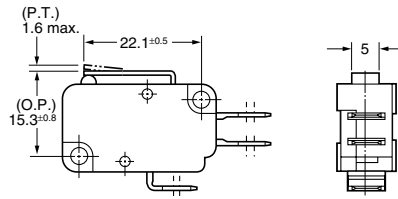
mm



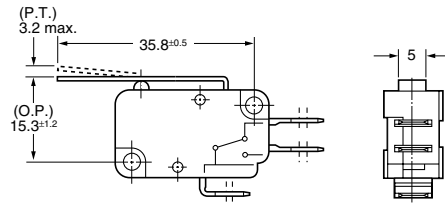
.187 Quick-connect/Solder terminal



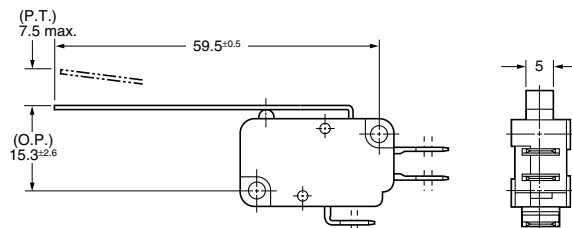
2. Short hinge lever



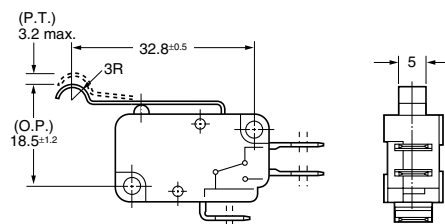
3. Hinge lever



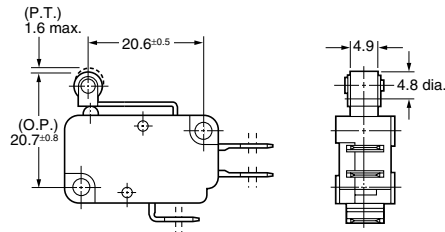
4. Long hinge lever



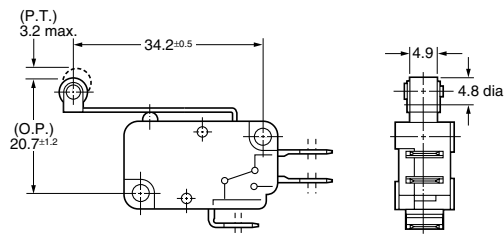
5. Simulated roller lever



6. Short roller lever



7. Roller lever



NOTES

1. Use M3 screws to mount switches with less than 0.49N·m torque. Use of screw washers or adhesive lock is recommended. Before mounting, check insulation distance between terminals as well as between terminals and ground. If enough distance is not secured, it is recommended to use insulation material in mounting.
2. Set 70 to 100% overtravel in actual use. When the operation object is in the free position, force should not be applied directly to the actuator or to the pin plunger. Also force should be applied to the pin plunger from vertical direction to the switch.
3. When specifying NV switches, allow \pm 20% to the listed operating and release forces.

4. Hand soldering should be accomplished in less than 5 seconds, preferably with a 60 watt iron. Avoid contacting the switch case with the soldering iron.
5. Low-level circuit type is recommended for using under low-level current and voltage.
6. Avoid using NV switches in the following conditions:
 - In corrosive gases, such as hydrogen sulfide.
 - In flammable or explosive gases such as gasoline or thinner etc.
 - In a dusty environment.
 - In an ambient temperature under -25°C or over 80°C .
 - In an ambient humidity over 85% R.H..