

# Single-In-Line Conformal Series 770



## Low Profile Conformal Products

CTS' expertise in resistor network technology is available in space-saving conformal products.

- High-reliability cermet resistors
- Space saving over individual resistors
- Available in odd or even number of pins from 4 to 12 leads
- 2.54mm/100in. pin spacing

## Resistance Range:

Standard: 10Ω through 1 MegΩ

## Resistance Tolerance:

Standard: ±2% or 0.5Ω (whichever is greater)

## Maximum Operating Voltage:

100V not to exceed rated power

## Temperature Coefficient:

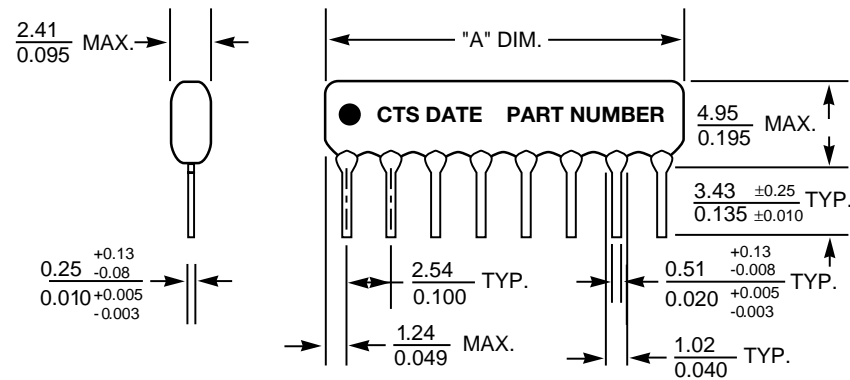
100Ω to 1 MegΩ  
±100PPM/°C typical  
22Ω to 99Ω  
±200PPM/°C typical

## Operating Temperature Range:

-55°C to +125°C

## Dielectric Strength:

100 VAC



### NOTES:

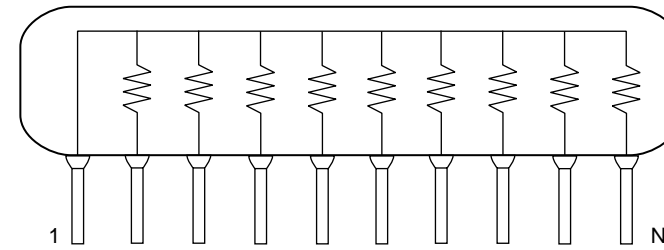
- General Tolerances mm ±0.25  
inch ±0.010
- Dimensions are mm/in.
- Copper Alloy Leads, Solder-coated
- Product Color Blue

Number Pins	"A" Dimension ±0.25/0.010	Package Power @25°C	Package Power @70°C
4	10.11/0.398	0.60 W	0.40 W
5	12.65/0.498	0.83 W	0.52 W
6	15.19/0.598	0.96 W	0.64 W
7	17.30/0.698	1.18 W	0.76 W
8	20.27/0.798	1.32 W	0.88 W
9	22.81/0.898	1.49 W	1.00 W
10	25.35/0.998	1.66 W	1.11 W
11	27.89/1.098	1.83 W	1.24 W
12	30.43/1.198	2.00W	1.35 W
Schematic		Resistor Power @25°C	Resistor Power @70°C
1 & 5		0.15 W	0.10 W
3		0.30 W	0.20 W

Power Derating	page 33
Land Patterns	pages 34-35
Packaging	pages 36-37
Environmental Performance Specifications	pages 38-39

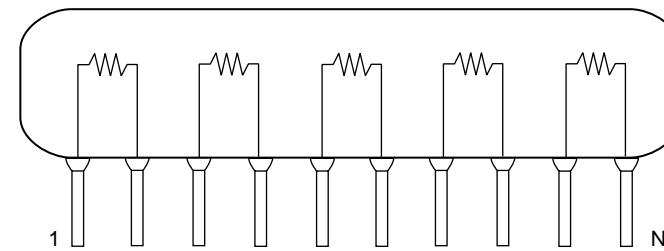
## Bussed CTS Schematic 1

Available in  
4 through 12 Pins



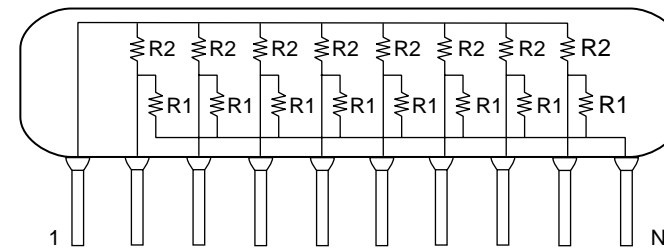
## Isolated CTS Schematic 3

Available in  
4, 6, 8, 10, 12 Pins



## Dual Terminator CTS Schematic 5

Available in  
6, 8, 10 Pins



(Ohms)	EIA Code	(Ohms)	EIA Code
10	100	3300	332
12	120	3900	392
15	150	4700	472
18	180	5100	512
22	220	5600	562
27	270	6800	682
33	330	8200	822
39	390	10000	103
47	470	11000	113
51	510	12000	123
56	560	15000	153
68	680	18000	183
75	750	20000	203
82	820	22000	223
100	101	27000	273
110	111	33000	333
120	121	39000	393
150	151	47000	473
180	181	51000	513
200	201	56000	563
220	221	68000	683
270	271	82000	823
330	331	100000	104
390	391	110000	114
470	471	120000	124
510	511	150000	154
560	561	180000	184
680	681	220000	224
820	821	270000	274
1000	102	330000	334
1100	112	390000	394
1200	122	470000	474
1500	152	510000	514
1800	182	560000	564
2200	222	680000	684
2700	272	820000	824
		1000000	105

## How to Order Series 770 Products

**770**    **10**    **3**    **103**

Series 770

Number of Pins

Schematic  
1 Bussed  
3 Isolated  
5 Dual Terminator

Resistor Code Schematics 1 & 3  
Resistor Value Schematic 5  
Example 220/330 = 220Ω/330Ω  
All standard part numbers are ±2%

NOTE: No dashes or spaces to appear in part number.

Example: 770103103

See page 33 for part marking information.