



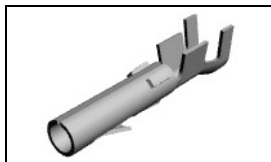
Have a Question?
 Chat with a Product
 Information Specialist

What can we help you find?

[Products](#) |
 [Industries](#) |
 [Resources](#) |
 [About TE](#) |
 [My Account](#) |
 [Innovation](#) |
 [Support Center](#)

60619-1 Product Details

[Share](#) |
 [Print](#) |
 [Email](#)



60619-1

TE Internal Number: 60619-1

Active

View 3D PDF

.200" Centerline, 250 V, 13 A max.

Always EU RoHS/ELV Compliant (Statement of Compliance)

Product Highlights:

- Commercial MATE-N-LOK Product Line
- Wire-to-Wire
- Applies To Wire/Cable
- Contact
- Contact Type = Socket

[View all Features](#)

Quick Links

- ▶ [Pricing & Availability](#)
- ▶ [Search for Tooling](#)
- ▶ [View Housings \(138\)](#)
- ▶ [Product Feature Selector](#)
- ▶ [Contact Us About This Product](#)

[Add to My Part List](#) |
 [Request Sample](#) |
 [Find Similar Products](#) |
 [Buy Product](#)

Documentation & Additional Information	
<p>Product Drawings:</p> <ul style="list-style-type: none"> • socket loose piece commercial mate-n-lok (PDF, English) <p>Catalog Pages/Data Sheets:</p> <ul style="list-style-type: none"> • SOFT_SHELL_PIN_SOCKET_CONNECTORS_STANDARD_DENSITY (PDF, English) <p>Product Specifications:</p> <ul style="list-style-type: none"> • None Available <p>Application Specifications:</p> <ul style="list-style-type: none"> • Commercial MATE-N-LOK Pin And Socket Contacts (PDF, English) • MATE-N-LOK Commercial Pin and Socket Contacts (PDF, Japanese) <p>Instruction Sheets:</p> <ul style="list-style-type: none"> • Universal, Commercial, and .140 MATE-N-LOK Contact ... (PDF, English) <p>CAD Files: (CAD Format & Compression Information)</p> <ul style="list-style-type: none"> • 2D Drawing (DXF, Version T) • 3D Model (IGES, Version T) • 3D Model (STEP, Version T) 	<p>Additional Information:</p> <ul style="list-style-type: none"> • Product Line Information <p>Related Products:</p> <ul style="list-style-type: none"> • Tooling • Housings (138)

[List all Documents](#)

Product Features (Please use the Product Drawing for all design activity)	
<p>Product Type Features:</p> <ul style="list-style-type: none"> • Product Line = Commercial MATE-N-LOK • Product Type = Contact • Wire/Cable Type = Discrete Wire • Termination Method to Wire/Cable = Crimp • Sealed = No <p>Mechanical Attachment:</p> <ul style="list-style-type: none"> • Contact Retention = With • Contact Retention Type = Locking Lance <p>Electrical Characteristics:</p> <ul style="list-style-type: none"> • Contact - Rated Current (A) = 15 • Operating Voltage Reference = AC • Operating Voltage (VAC) = 250 <p>Termination Features:</p> <ul style="list-style-type: none"> • Wire/Cable Size (mm²) = 0.5 - 2 • Wire/Cable Size (AWG) = 14 - 20 <p>Body Features:</p> <ul style="list-style-type: none"> • Wire Type = Stranded <p>Contact Features:</p> <ul style="list-style-type: none"> • Contact Type = Socket • Contact Plating, Mating Area, Material = Pre-Tin • Contact Diameter (mm [in]) = 2.13 [0.084] 	<p>Industry Standards:</p> <ul style="list-style-type: none"> • RoHS/ELV Compliance = RoHS compliant, ELV compliant • Lead Free Solder Processes = Not relevant for lead free process • RoHS/ELV Compliance History = Always was RoHS compliant • VDE Tested = No <p>Environmental:</p> <ul style="list-style-type: none"> • Operating Temperature (°C [°F]) = -55 - +105 [-67 - +221] <p>Conditions for Usage:</p> <ul style="list-style-type: none"> • Applies To = Wire/Cable • For Multiple Crimp = No • Accepts Wire Insulation Diameter, Range (mm [in]) = 3.30 [0.130] • For Use With = Commercial MATE-N-LOK housings <p>Operation/Application:</p> <ul style="list-style-type: none"> • Application Use = Wire-to-Wire <p>Packaging Features:</p> <ul style="list-style-type: none"> • Packaging Method = Bag • Packaging Quantity = 1,000 <p>Other:</p> <ul style="list-style-type: none"> • Brand = AMP

- Contact Base Material = Brass

Corporate Information

- [About TE](#)
- [Investors](#)
- [News Room](#)
- [Supplier Portal](#)
- [Careers](#)
- [Terms & Conditions](#)
- [Privacy Policy](#)

Quick Links

- [Distributor Inventory](#)
- [Product Cross Reference](#)
- [Documents & Drawings](#)
- [Product Compliance Support Center](#)
- [Site Map](#)

Customer Support

- [Email or Chat With Us](#)
- [Find a Phone Number](#)
- [Knowledge Base](#)
- [Manage Your Account](#)

Keep Me Informed

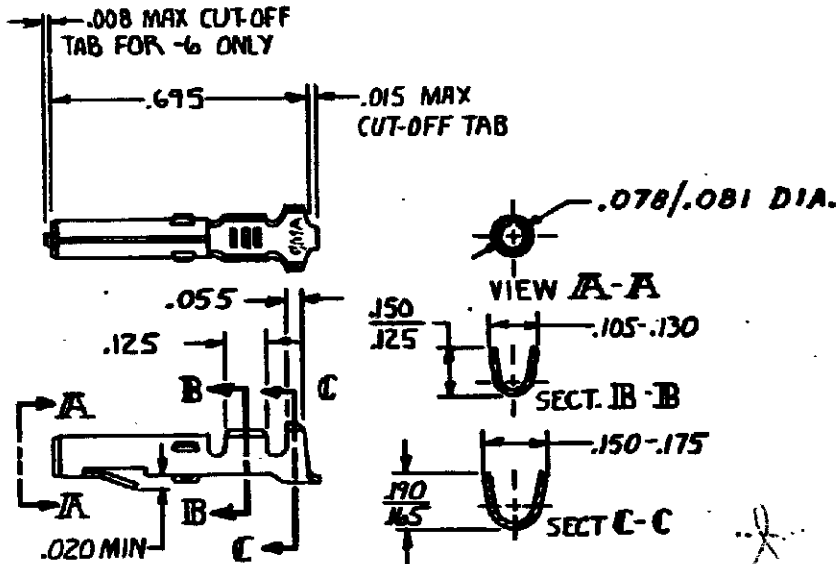


DRAWING MADE IN THIRD ANGLE PROJECTION

12 LCC CM 53

© COPYRIGHT

REVISIONS			
LTR	DESCRIPTION	DATE	APPROVED
T1	REVISED PER ECO-11-005294	05APR11	HMR



▲ NICKEL ON ENTIRE TERMINAL WITH .000030 GOLD OVER INSIDE OF MATING AREA AND WIRE BARREL.

GOLD	▲ .012 PH. BRZ.	60619-7
GOLD	▲ .012 BRASS	-5
TIN	.012 PH. BRZ	-4
TIN	.012 BRASS	60619-1
FINISH	MATERIAL	PART NO

UNLESS OTHERWISE SPECIFIED DIMENSIONS ARE IN INCHES. TOLERANCES ON: DECIMALS ± .015 ANGLES ±	CONTRACT NO			
	DR M. FEHER 11-14-79			
MATERIAL SEE TABLE	CHK D.S. Heide 1/4/80	NAME SOCKET, LOOSE PIECE, COMMERCIAL MATE-N-LOK		
	APPD [Signature] 1-7-80	SIZE A	CODE IDENT. NO 00779	DRAWING NO 60619
FINISH SEE TABLE	WIRE RANGE 20-14 AWG	SCALE	SHEET	
	INSULATION DIA .130 MAX			

CUSTOMER DRAWING