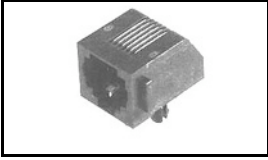


5555167-1 Product Details

[Share](#) [Print](#) [Email](#)




5555167-1

TE Internal Number: 5555167-1

 **Active**

[View 3D PDF](#)

PCB Mounted Jacks - Single Port, Multi-port and Stacked

 Always EU RoHS/ELV Compliant
(Statement of Compliance)

Product Highlights:

- Connector
- Preloaded
- Single Port Configuration
- 1 x 1 Jack Configuration
- Jack Type = RJ45

[View all Features](#)

Quick Links

- ▶ [Pricing & Availability](#)
- ▶ [Search for Tooling](#)
- ▶ [Product Feature Selector](#)
- ▶ [Contact Us About This Product](#)

[Add to My Part List](#) [Request Sample](#) [Find Similar Products](#)

[Buy Product](#)

Documentation & Additional Information

Product Drawings:

- [MOD JACK ASSEMBLY, 8 POSITION LOW PROFILE, RIGHT ANG... \(PDF, English\)](#)

Catalog Pages/Data Sheets:

- [1-1773464-9_MODULAR JACKS_SINGLE_PORT_PCB_MOUNT \(PDF, English\)](#)
- [82066 - Modular Jacks and MRJ21 Product catalog - Si... \(PDF, English\)](#)

Product Specifications:

- [Modular Plugs, Thru-Hole and Surface Mount Jacks, Da... \(PDF, English\)](#)

Application Specifications:

- [Modular Jacks \(PDF, English\)](#)

Instruction Sheets:

- None Available

CAD Files: (CAD Format & Compression Information)

- [2D Drawing \(DXF, Version A\)](#)
- [3D Model \(IGES, Version A\)](#)
- [3D Model \(STEP, Version A\)](#)

[List all Documents](#)

Additional Information:

- [Product Line Information](#)

Related Products:

- [Tooling](#)

Product Features (Please use the Product Drawing for all design activity)

Product Type Features:

- Product Type = Connector
- Jack Type = RJ45
- PCB Mounting Orientation = Side Entry (Right Angle)
- PCB Mount Style = Through Hole
- Termination Method to PC Board = Solder
- Performance Category = Cat 3
- LED = Without
- Grounding Options = Without
- Panel Stops = Without
- Keyed = Yes
- Profile = Low

Body Features:

- Inverted Jack Face = No

Contact Features:

- Contact Plating, Mating Area, Material = Gold (50)
- Contact Base Material = Phosphor Bronze

Housing Features:

- Housing Material = PBT - GF
- UL Flammability Rating = UL 94V-0

Configuration Features:

- Preloaded = Yes

- [Color](#) = Black
- Latch Style = Standard

Mechanical Attachment:

- [Panel Mount Retention](#) = With
- Flanged = No

Electrical Characteristics:

- [Shielded](#) = No

Termination Features:

- [Solder Tail Contact Plating](#) = Tin over Nickel

Dimensions:

- [Height \(mm \[in\]\)](#) = 12.70 [0.500]
- [PCB Tail Length \(mm \[in\]\)](#) = 3.80 [0.150]
- [PCB Thickness, Recommended \(mm \[in\]\)](#) = 1.57 [0.062]

- Port Configuration = Single
- [Jack Configuration](#) = 1 x 1
- [Number of Positions](#) = 8
- Number of Contacts Loaded = 8

Industry Standards:

- [RoHS/ELV Compliance](#) = RoHS compliant, ELV compliant
- [Lead Free Solder Processes](#) = Wave solder capable to 260°C, Wave solder capable to 240°C, Wave solder capable to 265°C
- [RoHS/ELV Compliance History](#) = Always was RoHS compliant

Packaging Features:

- Packaging Method = Tray

Product Availability:

- Region = Asia, North America

Other:

- Brand = AMP

Corporate Information

- [About TE](#)
- [Investors](#)
- [News Room](#)
- [Supplier Portal](#)
- [Careers](#)
- [Terms & Conditions](#)
- [Privacy Policy](#)

Quick Links

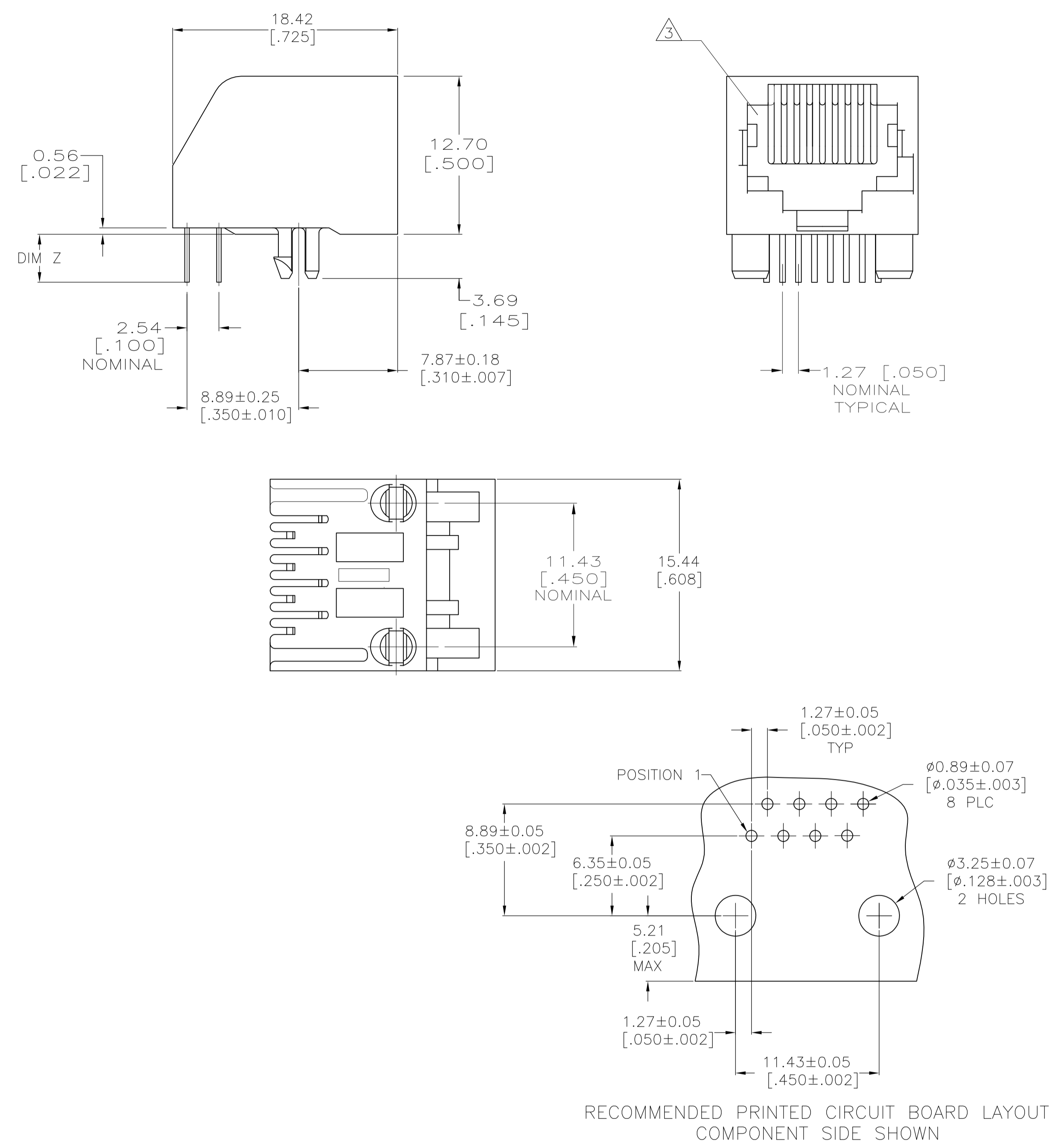
- [Distributor Inventory](#)
- [Product Cross Reference](#)
- [Documents & Drawings](#)
- [Product Compliance Support Center](#)
- [Site Map](#)

Customer Support

- [Email or Chat With Us](#)
- [Find a Phone Number](#)
- [Knowledge Base](#)
- [Manage Your Account](#)

Keep Me Informed





- DIMENSIONS ARE MAXIMUM UNLESS OTHERWISE SPECIFIED.
 - MATERIAL: HOUSING – PBT POLYESTER, COLOR: BLACK.
TERMINAL – PHOS-BRONZE PLATED WITH 1.27µm [.000050] MINIMUM THICK HARD GOLD IN LOCALIZED GOLD PLATE AREA AND 3.81µm [.000150] MINIMUM THICK MATTE TIN IN SOLDER AREA OVER 1.27µm [.000050] MINIMUM THICK NICKEL UNDERPLATE.
- △3 CAVITY CONFORMS TO FCC RULES AND REGULATIONS PART 68, SUBPART F.
- △4 BULK PACKAGED IN A TRAY.
- △5 PACKAGED 36 ASSEMBLIES PER TUBE WITH BOTH ENDS CRIMPED. SEE DETAIL A.

△3	8	2.80±0.25 [.110±.010]	5555167-4
△4	8	3.81±0.51 [.15±.02]	5555167-1
PACKAGED	TERMINALS	DIMENSION Z	PART NUMBER

THIS DRAWING IS A CONTROLLED DOCUMENT.		DIN 31AUG2007 G.ATTADIA/L.A.MAYER		TE Connectivity	
DIMENSIONS: mm [INCHES]		TOLERANCES UNLESS OTHERWISE SPECIFIED:			
		0 PLC	± -	APVD 31AUG2007 S.FLICKINGER	
		1 PLC	± -	NAME MOD JACK ASSEMBLY, 8 POSITION LOW PROFILE, RIGHT ANGLE, KEYED, WITHOUT PANEL STOPS	
		2 PLC	± 0.13[.005]	PRODUCT SPEC 108-1163	
		3 PLC	± -	APPLICATION SPEC 114-2048	
MATERIAL SEE NOTE 2		FINISH SEE NOTE 2		WEIGHT	—
				SIZE	A1
				CAGE CODE	00779
				DRAWING NO	5555167
				RESTRICTED TO	—
				CUSTOMER DRAWING	SCALE 4:1 SHEET 1 OF 1 REV B1