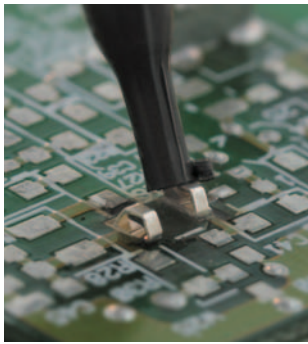


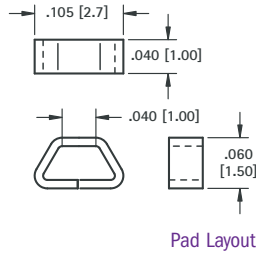
(SMT) SURFACE MOUNT TEST POINTS ON TAPE & REEL

MINIATURE

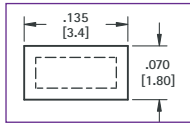


- Ultra low profile, ideally suited for advanced surface mount printed circuit board applications
- Designed for long life and durability
- Manufactured using flat wire to provide a large mounting surface area
- Ideal for use with miniature probes, clips, and hooks
- Efficient, safe, board level testing

SUPPLIED ON TAPE AND REEL



Pad Layout



SPECIFICATIONS

Contact Material:

.010 (.25) thick Phosphor Bronze

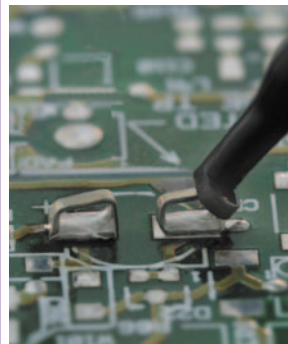
Contact Finish: Silver Plate

Tape Material: 8mm wide; 4mm pitch; conductive polycarbonate carrier tape meets ANSI/EIA-481 standard

CAT. NO. 5015 - 1000 pieces per reel

CAT. NO. 5017 - 5000 pieces per reel

COMPACT



- Unique design provides exceptional strength and durability
- Simplifies testing on dense SMT circuit boards
- Ideal for use with most standard probes, clips and hooks
- Efficient, safe, board level testing

SUPPLIED ON TAPE AND REEL

SPECIFICATIONS

Contact Material:

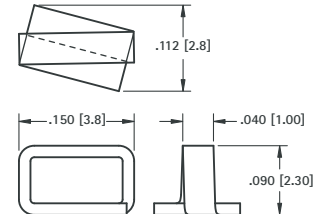
.015 (.38) thick Phosphor Bronze

Contact Finish: Silver Plate

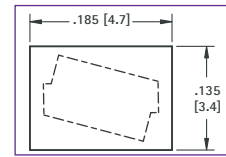
Tape Material: 12mm wide; 4mm pitch; conductive polycarbonate carrier tape meets ANSI/EIA-481 standard

CAT. NO. 5016 - 1000 pieces per reel

CAT. NO. 5018 - 5000 pieces per reel



Pad Layout

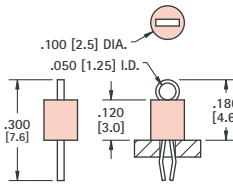


(THM) THRU HOLE MOUNT TEST POINTS - COLOR KEYED

- Color keyed for visibility and quick identification
- Economical choice for PC test point terminations
- Snap-fit mounting provides positive retention for wave soldering
- Wire form loop for safe, non-slip testing
- Space saving, ultra low and low profile designs
- High profile design for difficult to reach applications
- Suitable for high density packaging on .062 (1.57) and .093 (2.36) PC boards
- Practical replacement for wire-wrap posts and turrets
- Secure grip for J hooks, EZ hooks, grabbers, alligator clips, tips or probes
- High temperature nylon base ideal for reflow soldering
- Ideal for reliable production testing and field service troubleshooting



MINIATURE



SPECIFICATIONS

Terminal:

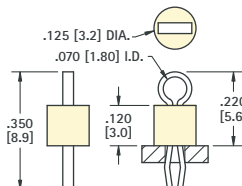
.010 (.25) x .020 (.51) thick Phosphor Bronze Wire, Silver Plate

Base: Nylon 46, UL Rated 94V-0

Mtg. Hole: .040 (1.0) Diameter

| CAT. NO. | BASE COLOR | CAT. NO. | BASE COLOR |
|----------|------------|----------|------------|
| 5000 | RED | 5115 | BROWN |
| 5001 | BLACK | 5116 | GREEN |
| 5002 | WHITE | 5117 | BLUE |
| 5003 | ORANGE | 5118 | GREY |
| 5004 | YELLOW | 5119 | PURPLE |

COMPACT



SPECIFICATIONS

Terminal:

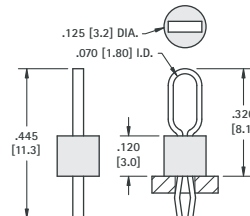
.015 (.38) x .032 (.81) thick Phosphor Bronze Wire, Silver Plate

Base: Nylon 46, UL Rated 94V-0

Mtg. Hole: .063 (1.6) Diameter

| CAT. NO. | BASE COLOR | CAT. NO. | BASE COLOR |
|----------|------------|----------|------------|
| 5005 | RED | 5120 | BROWN |
| 5006 | BLACK | 5121 | GREEN |
| 5007 | WHITE | 5122 | BLUE |
| 5008 | ORANGE | 5123 | GREY |
| 5009 | YELLOW | 5124 | PURPLE |

MULTIPURPOSE



SPECIFICATIONS

Terminal:

.015 (.38) x .032 (.81) thick Phosphor Bronze Wire, Silver Plate

Base: Nylon 46, UL Rated 94V-0

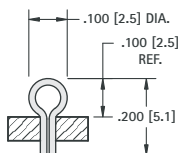
Mtg. Hole: .063 (1.6) Diameter

| CAT. NO. | BASE COLOR | CAT. NO. | BASE COLOR |
|----------|------------|----------|------------|
| 5010 | RED | 5125 | BROWN |
| 5011 | BLACK | 5126 | GREEN |
| 5012 | WHITE | 5127 | BLUE |
| 5013 | ORANGE | 5128 | GREY |
| 5014 | YELLOW | 5129 | PURPLE |

ULTRA LOW PROFILE

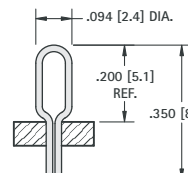
WITHOUT BASE

SHOWN AS INSTALLED INTO .040 [1.02] DIA. MOUNTING HOLE



| CAT. NO. | BASE COLOR |
|----------|------------|
| 5021 | NONE |

MATERIAL: .017 (.43) Diameter Phosphor Bronze, Silver Plate
Mtg. Hole: .040 (1.0) Diameter



SHOWN AS INSTALLED INTO .040 [1.02] DIA. MOUNTING HOLE

| CAT. NO. | BASE COLOR |
|----------|------------|
| 5020 | NONE |