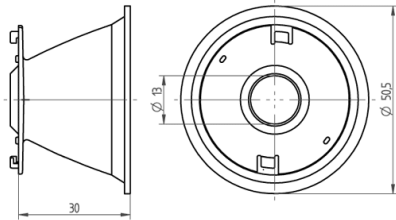
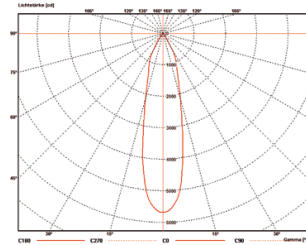




Technology for Light

Reflector 47.940.-312.56



100°C



Technology for Light

Reflector

47.940.-312.56

DESCRIPTION

Reflector can only be used by screw fixing the spotlight connector with dome headed screws and locking washer
*Beam angle (FWHM) measured with Citizen CLU28 and connector 47.319.6294.1010.50. Beam angle depends on the COB used.

| | |
|----------------------------|---|
| Weight: | 8 |
| Product name: | Reflector |
| Material: | Reflector: PC |
| Short description: | For use with Spotlight connectors 47.319.6060, 47.319.6101, 47.319.6200 and 47.319.6180 |
| Pkg.: | 150 |
| Beam angle: | 27° |
| Beam angle characteristic: | Medium |
