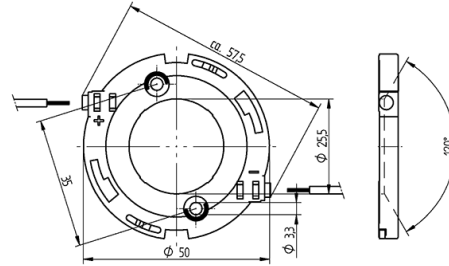
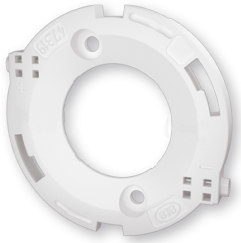




Technology for Light

# COB connector $\varnothing$ 50 mm for LED array 28 x 28 mm 47.319.2030.50



0,25 - 0,5 mm<sup>2</sup>



0,5 mm<sup>2</sup>



# COB connector Ø 50 mm for LED array 28 x 28 mm 47.319.2030.50

Technology for Light

## DESCRIPTION

With integrated reflector interface  
Screw mounting: for screws M3 and locking washer  
Max. torque for screw fixing 0.5 Nm\*  
Strip length: 7-1 mm  
Polarity of LED must be observed  
Specifications of LED manufacturer must be observed  
cURus: For limited applications  
VDE-Reg. No. E289  
\*Please note the max torque of the COB manufacturer

Mounting method 1:	Screw mount
LED Typ:	Opto 40W, PB40H02, SAW x2296A, LC040D / 60D / 80D, CL-U730 / CL-U731, CL-U044/U046/U048, V22, CLM-22 / CXM-22, PB38U02, CHM-14, PB30U03, PB20U02, PB40U03, PACG 110, PB38V03, SP22N-4090, GME2821, 37W L-COB G2, G7, LEMWM28-40W, SLM 28 x 28, PB20H01, ZC25/40/60, COB-Q series, CL-L040/042, SAW x2298A, SAW x229AAA, PB38H01
LED manufacturer:	GLBTECH, iLED, Lextar, Bridgelux, Citizen, Edison, Itswell, Luminus, Prolight Opto, Samsung, Seoul Semiconductor, Sunpu, LG Innotek, Philips
Prefixation of COB:	Yes
Conductor cross-section:	0.5 mm
Weight:	5
Approval:	cURus
Material:	Housing: PBT Contacts: CuSn
cULus file no.:	E-345385
Mounting method 2:	P2F fixing with 28.902.-102
Pkg.:	504
Rating:	3A / 150 VDC
Product name:	COB connector Ø 50 mm for LED array 28 x 28 mm

## Suitable for the following LED models:

LED Manufacturer	LED Type	More Information
Seoul Semiconductor	SAW x2296A	<a href="http://www.seoulsemicon.com">http://www.seoulsemicon.com</a>
Itswell	COB-Q series	<a href="http://www.itswell.com">http://www.itswell.com</a>
Citizen	CL-U730 / CL-U731	<a href="http://ce.citizen.co.jp">http://ce.citizen.co.jp</a>
Citizen	CL-U044/U046/U048	<a href="http://ce.citizen.co.jp">http://ce.citizen.co.jp</a>
Seoul Semiconductor	ZC25/40/60	<a href="http://www.seoulsemicon.com">http://www.seoulsemicon.com</a>
Lextar	PB20H01	<a href="http://www.lextar.com">http://www.lextar.com</a>
Citizen	CL-L040/042	<a href="http://ce.citizen.co.jp">http://ce.citizen.co.jp</a>
Philips	SLM 28 x 28	<a href="http://www.lighting.philips.co.uk/oem-emea">http://www.lighting.philips.co.uk/oem-emea</a>
LG Innotek	LEMWM28-40W	<a href="http://ledlighting.lginnotek.com">http://ledlighting.lginnotek.com</a>
Sunpu	G7	<a href="http://www.sunpuled.com">http://www.sunpuled.com</a>
Edison	Opto 40W	<a href="http://www.edison-opto.com.tw">http://www.edison-opto.com.tw</a>



Technology for Light

# COB connector Ø 50 mm for LED array 28 x 28 mm 47.319.2030.50

---

GLBTECH	GME2821	<a href="http://www.high-cri-led.com">http://www.high-cri-led.com</a>
Luminus	CLM-22 / CXM-22	<a href="http://www.luminus.com">http://www.luminus.com</a>
iLED	SP22N-4090	<a href="http://www.iledm.com">http://www.iledm.com</a>
Prolight Opto	PACG 110	<a href="http://www.prolightopto.com">http://www.prolightopto.com</a>
Samsung	LC040D / 60D / 80D	<a href="http://www.samsung.com">http://www.samsung.com</a>
Bridgelux	V22	<a href="http://www.bridgelux.com">http://www.bridgelux.com</a>
Lextar	PB38H01	<a href="http://www.lextar.com">http://www.lextar.com</a>
Lextar	PB40H02	<a href="http://www.lextar.com">http://www.lextar.com</a>
Lextar	PB40U03	<a href="http://www.lextar.com">http://www.lextar.com</a>
Lextar	PB20U02	<a href="http://www.lextar.com">http://www.lextar.com</a>
Lextar	PB30U03	<a href="http://www.lextar.com">http://www.lextar.com</a>
Luminus	CHM-14	<a href="http://www.luminus.com">http://www.luminus.com</a>
LG Innotek	37W L-COB G2	<a href="http://ledlighting.lginnotek.com">http://ledlighting.lginnotek.com</a>
Lextar	PB38U02	<a href="http://www.lextar.com">http://www.lextar.com</a>
Lextar	PB38V03	<a href="http://www.lextar.com">http://www.lextar.com</a>
Seoul Semiconductor	SAW x229AAA	<a href="http://www.seoulsemicon.com">http://www.seoulsemicon.com</a>
Seoul Semiconductor	SAW x2298A	<a href="http://www.seoulsemicon.com">http://www.seoulsemicon.com</a>