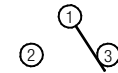
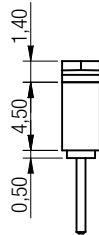
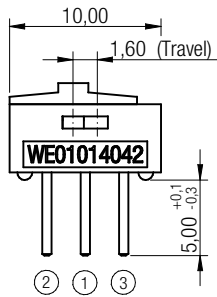
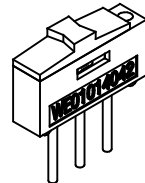
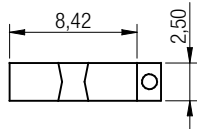


P.C.B. MOUNTING PLAN



SCHEMATIC



TECHNICAL CHARACTERISTICS

SPECIFICATION

- >Rating: 500mA, 12VDC
- >Contact Resistance: 30mOHM max.
- >Insulation Resistance: >10,000MOHM at 500VDC
- >Dielectric Strength: 500VAC for 1 minute
- >Travel: 1,6mm
- >Operating force: 800g max.
- >Life cycle: 2000 steps
- >Switch function: ON-ON

MATERIAL

- >Cover: PA66 UL 94V-0, color grey
- >Slide: PA66 UL 94V-0, color red
- >Contact: Gold Plated
- >Terminal: Gold Plated

SOLDERING INFORMATION

- >Terminal in THT version
- >Wave soldering at 260 °C for 10 sec. max.

ENVIRONMENTAL

- >Storage condition: -40 °C ~ +85 °C
- >Operation condition: -40 °C ~ +85 °C
- >Compliance: ROHS, Reach

PACKAGING INFORMATION

- >Bulk

Scale - 2:1

This electronic component is designed and developed with the intention for use in general electronics equipments.

Before incorporating the components into any equipments in the field such as aerospace, aviation, nuclear control, submarine, transportation, (automotive control, train control, ship control), transportation signal, disaster prevention, medical, public information network etc. where higher safety and reliability are especially required or if there is possibility of direct damage or injury to human body, Würth Elektronik must be asked for a written approval.

In addition, even electronic component in general electronic equipments, when used in electrical circuits that require high safety, reliability functions or performance, the sufficient reliability evaluation-check for the safety must be performed before by the user before usage.

		Projection		GENERAL TOLERANCE .x = +/- 0,2 .xx = +/- 0,15		Basic material	
				Date	Name	DESCRIPTION	
				Drawn	12-02-02	Jelisarow	WS-SHT
				Checked			10mmx2,5mm mini Slide Swith, THT version
						Scale	2:1
						Position	
						Drawing.- No.	450301014042
							A4
REV	FILE	DATE	BY	EDV NO	450301014042.dft		System Solid Edge V20