

FCI CONFIDENTIAL



This document is the property of and embodies CONFIDENTIAL and PROPRIETARY information of FCI. No part of the information shown on this document may be used in any way or disclosed to others without the written consent of FCI. Copyright FCI.

PRODUCT NUMBER
20020110-XXX1A01LF

20020110- [] [] [] 1 A 0 1 L F

PITCH

C: 3.50 mm
D: 3.81 mm
G: 5.00 mm
H: 5.08 mm

POLES

02: 2 POLES
03: 3 POLES
04: 4 POLES

24: 24 POLES

PROPERTY TABLE				
FCI SERIES NAME	06-350	06-381	06-500	06-508
PITCH (mm)	3.50	3.81	5.00	5.08
VOLTAGE RATING (VAC)	300	300	300	300
CURRENT RATING (A)	10	10	12	12
WITHSTANDING VOLTAGE (kV)	1.6	1.6	1.6	1.6
OPERATING TEMP. (°C)	-40~115	-40~115	-40~115	-40~115
SOLDERING TEMP. (°C)	250±10 (5 sec.)	250±10 (5 sec.)	250±10 (5 sec.)	250±10 (5 sec.)
POLES AVAILABLE	02~24	02~24	02~24	02~24
SAFETY CERTIFICATE			Pending	

NOTES:

- MATERIALS
1-1 HOUSING: THERMALPLASTIC RESIN, UL 94V-0 RATED, COLOR GREEN.
1-2 TERMINAL: COPPER, TIN PLATED.
- PRODUCT SPECIFICATION REFER TO FCI GS-12-625.
- BOXED PACKAGING,
DETAILED PRODUCT PACKING SPECIFICATION REFER TO FCI GS-14-1394.
- FCI, SAFETY CERTIFICATE LOGO AND SERIES NAME TO BE SHOWN ON PRODUCT SURFACE.

	rev	ecn no	dr	date
TOLERANCES UNLESS OTHERWISE SPECIFIED	A	DG09-0203	BF	062509
	B	T09-1148	BF	111709
	C	T09-1152	BF	112609
LINEAR	X	±0.5	-	-
	X.X	±0.30	-	-
	X.XX	±0.10	-	-
ANGULAR	X'	±1'	-	-

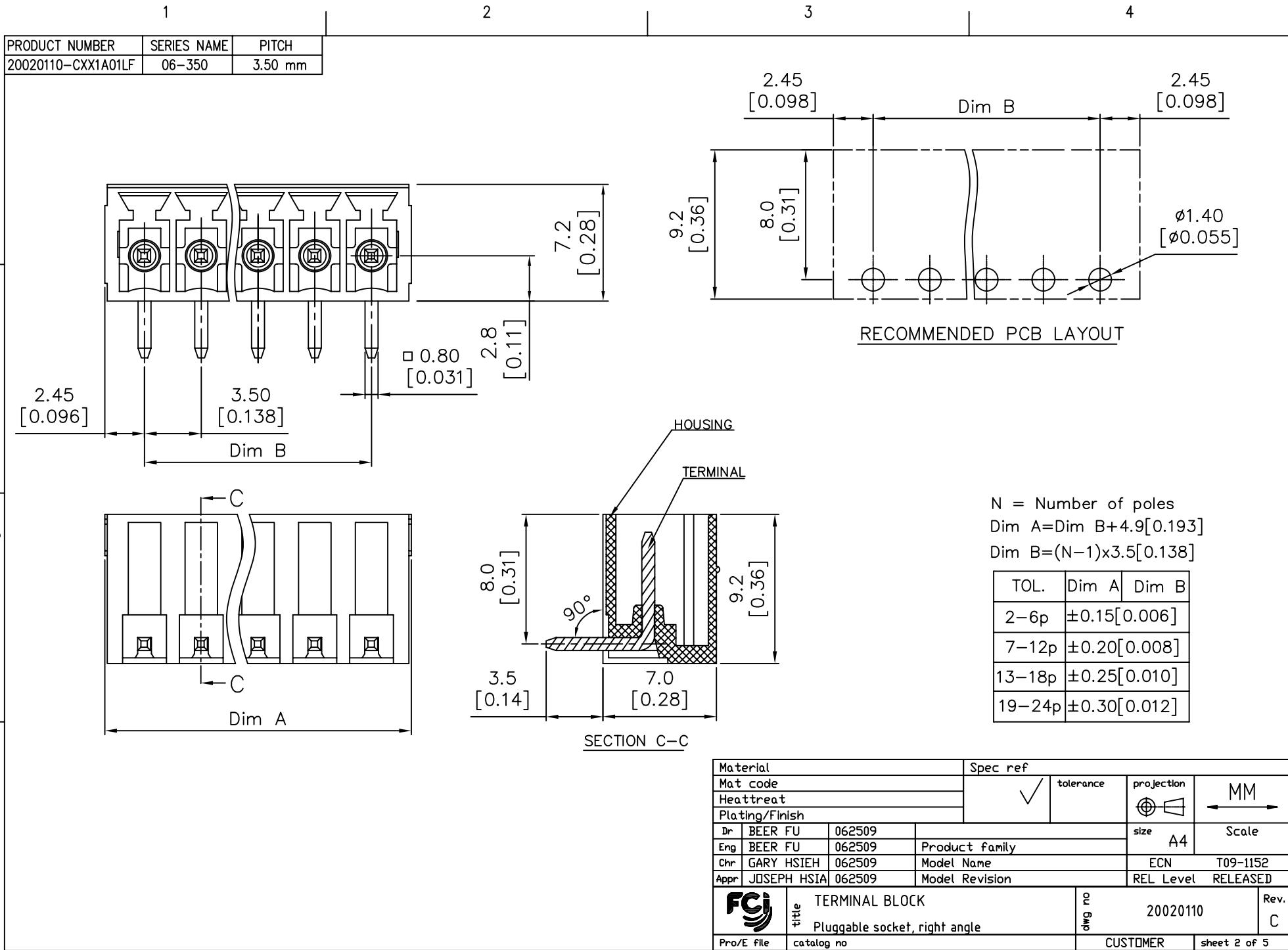
Material		Spec ref *	
Mat code		tolerance	projection
Heattreat		✓	⊕
Plating/Finish			MM
Dr	BEER FU 062509	size	A4
Eng	BEER FU 062509	Product family	Scale
Chr	GARY HSIEH 062509	Model Name	ECN T09-1152
Appr	JOSEPH HSIA 062509	Model Revision	REL Level RELEASED
	title	chg no	Rev.
	TERMINAL BLOCK	20020110	C
	Pluggable socket, right angle		
Pro/E file	catalog no	CUSTOMER	sheet 1 of 5

REV F: 2008-04-17

FCI CONFIDENTIAL



This document is the property of and embodies CONFIDENTIAL and PROPRIETARY information of FCI. No part of the information shown on this document may be used in any way or disclosed to others without the written consent of FCI. Copyright FCI.



N = Number of poles
 Dim A = Dim B + 4.9 [0.193]
 Dim B = (N - 1) x 3.5 [0.138]

TOL.	Dim A	Dim B
2-6p	±0.15 [0.006]	
7-12p	±0.20 [0.008]	
13-18p	±0.25 [0.010]	
19-24p	±0.30 [0.012]	

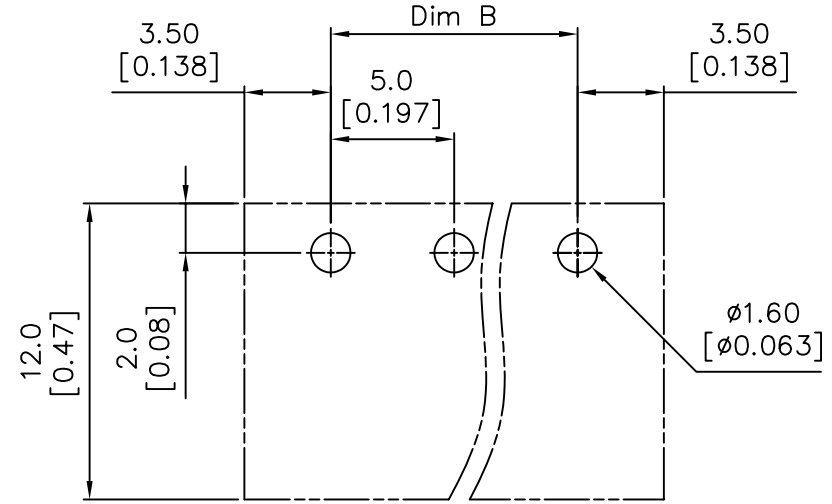
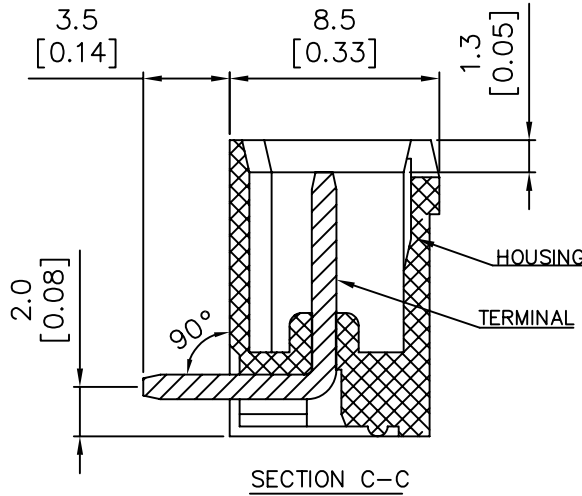
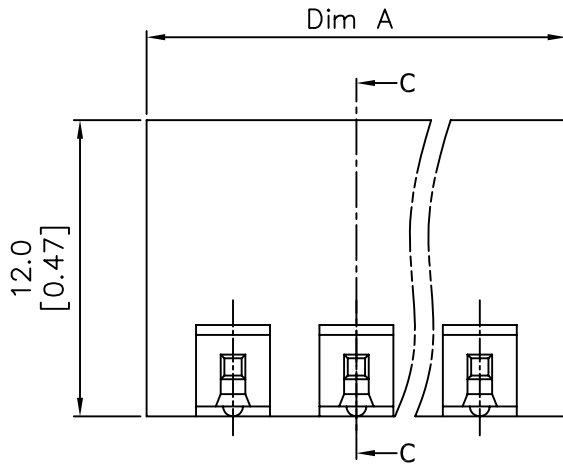
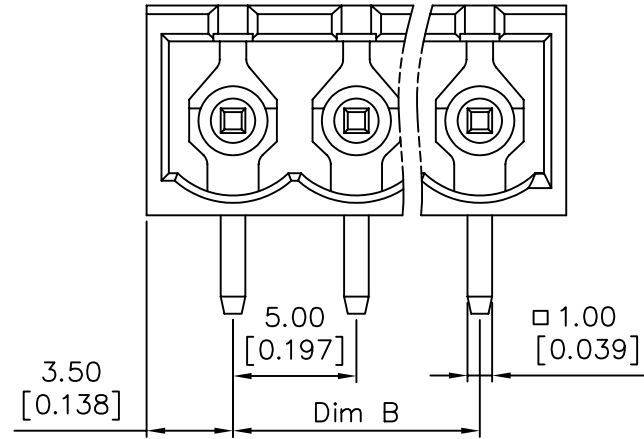
Material		Spec ref	
Mat code		✓	tolerance
Heattreat			projection
Plating/Finish			MM
Dr	BEER FU 062509	size	A4
Eng	BEER FU 062509	Product family	
Chr	GARY HSIEH 062509	Model Name	
Appr	JOSEPH HSIA 062509	Model Revision	
		ECN	T09-1152
		REL Level	RELEASED
	title	TERMINAL BLOCK	
		Pluggable socket, right angle	
Pro/E file	catalog no	chg no	20020110
		CUSTOMER	Rev. C
		sheet 2 of 5	

REV F: 2008-04-17

FCI CONFIDENTIAL

This document is the property of and embodies CONFIDENTIAL and PROPRIETARY information of FCI. No part of the information shown on this document may be used in any way or disclosed to others without the written consent of FCI. Copyright FCI.

PRODUCT NUMBER	SERIES NAME	PITCH
20020110-GXX1A01LF	06-500	5.00 mm



RECOMMENDED PCB LAYOUT

N = Number of poles
 $Dim A = N \times 5.0 [0.197] + 2.0 [0.193]$
 $Dim B = (N - 1) \times 5.0 [0.197]$

TOL.	Dim A	Dim B
2-6p	±0.15 [0.006]	
7-12p	±0.25 [0.010]	
13-16p	±0.35 [0.014]	
17-24p	±0.40 [0.016]	

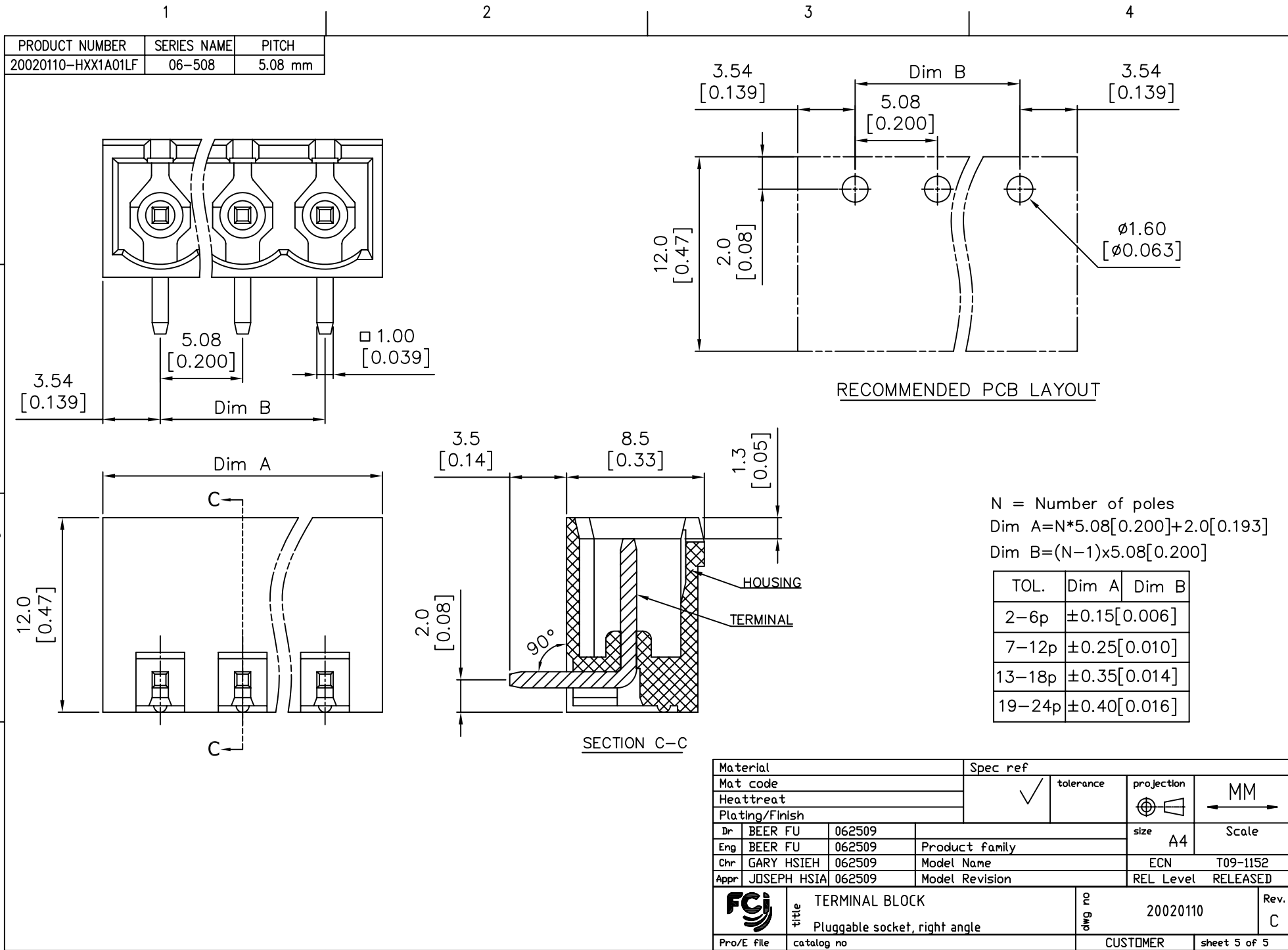
Material		Spec ref		
Mat code		✓	tolerance	projection
Heattreat				MM
Plating/Finish			⊕	↔
Dr	BEER FU 062509	size		A4
Eng	BEER FU 062509	Product family		
Chr	GARY HSIEH 062509	Model Name		ECN T09-1152
Appr	JOSEPH HSIA 062509	Model Revision		REL Level RELEASED
FCI title		TERMINAL BLOCK		Rev. C
Pluggable socket, right angle		chg no	20020110	
Pro/E file	catalog no	CUSTOMER	sheet 4 of 5	

REV F: 2008-04-17

FCI CONFIDENTIAL



This document is the property of and embodies CONFIDENTIAL and PROPRIETARY information of FCI. No part of the information shown on this document may be used in any way or disclosed to others without the written consent of FCI. Copyright FCI.



REV F: 2008-04-17