

PRODUCT NUMBER  
20020011-XXXXXXLF

20020011 — □ □ □ □ □ 0 □ L F

PITCH  
C: 3.50 mm  
D: 3.81 mm  
G: 5.00 mm  
H: 5.08 mm

POLES  
02: 2 POLES  
03: 3 POLES  
04: 4 POLES  
:  
:  
:  
24: 24 POLES

LF : NOTED RoHS COMPATIBLE

1 : STANDARD PRODUCT  
W/ BOX PACKING

PROPERTY TABLE							
FCI SERIES NAME		02-350	02-381	02-500	02-508		
PITCH (mm)		3.50	3.81	5.00	5.08		
VOLTAGE RATING (VAC)		300	300	300	300		
CURRENT RATING (A)		cULus	8	8	12		
		VDE	10	10	NA		
APPLICABLE WIRE RANGE (AWG)		1-WIRE	16~28	16~28	12~24		
		2-WIRE	20	20	18		
WIRE CROSS SECTION (mm <sup>2</sup> )		SOLID	1-WIRE	1.5	1.5	2.5	2.5
			2-WIRE	0.5	0.5	1.0	1.0
		STRANDED	1-WIRE	1.5	1.5	2.5	2.5
			2-WIRE	0.75	0.75	1.5	1.5
OPENING CONTACT HOUSING(mm <sup>2</sup> )		2.8x1.7	2.8x1.7	2.6x3.3	2.6x3.3		
WIRE STRIP LENGTH(mm)		6~7	6~7	6~7	6~7		
TORQUE +/-10% (N·m/Lb·in)		0.19/1.7	0.19/1.7	0.4/3.5	0.4/3.5		
WITHSTANDING VOLTAGE (kV)		SCREW	M2x0.4	M2x0.4	M3x0.5	M3x0.5	
		cULus	1.6	1.6	1.6	1.6	
		VDE	2.5	2.5	NA	NA	
OPERATING TEMP. (°C)		-40~+115	-40~+115	-40~+115	-40~+115		
POLES AVAILABLE		02~24	02~24	02~24	02~24		
SAFETY CERTIFICATE							

SCREW CODE

CODE	SCREW TYPE	AVAILABILITY
A	-/+	ON REQUEST ONLY
B	-	STANDARD

ALL FLANGE SCREWS ARE ONLY AVAILABLE IN +/- COMBINATION SCREW TYPES.

HOUSING CODE

CODE	COLOR	AVAILABILITY
1	GREEN(RAL 6018/T)	STANDARD
2	BLACK	ON REQUEST ONLY
3	GREY(RAL 7004/P)	ON REQUEST ONLY
4	BLUE(RAL 5015/A)	ON REQUEST ONLY

NOTES:

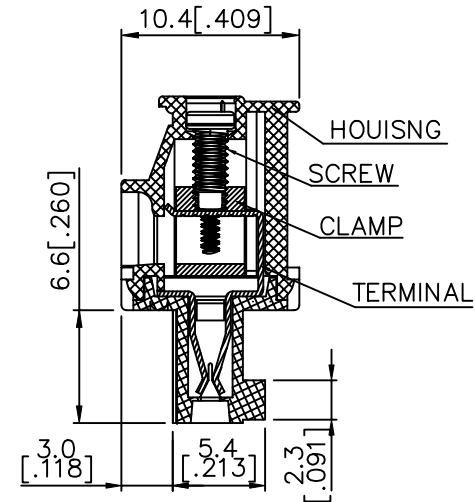
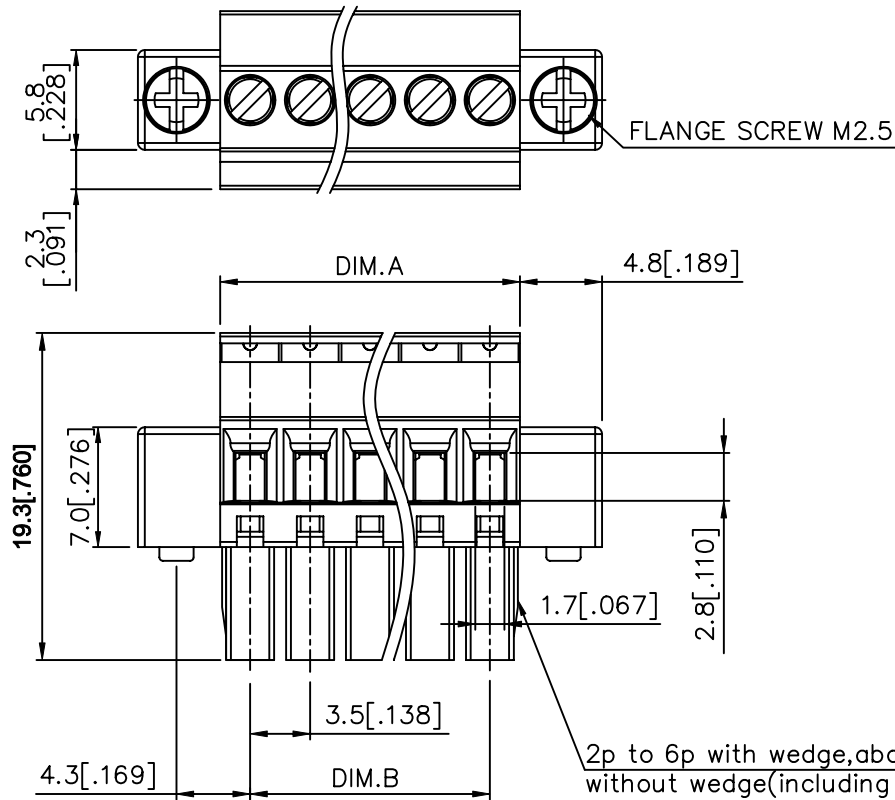
- MATERIALS  
1-1 HOUSING: THERMALPLASTIC RESIN, UL 94V-0 RATED.  
1-2 SCREW: STEEL, ZINC PLATED.  
1-3 CLAMP: COPPER ALLOY, NICKEL PLATED.  
1-4 TERMINAL: COPPER ALLOY, TIN PLATED.
- PRODUCT SPECIFICATION REFER TO FCI GS-12-625.
- PRODUCT PACKING SPECIFICATION REFER TO FCI GS-14-1394.
- FCI, SAFETY CERTIFICATE LOGO AND SERIES NAME TO BE SHOWN ON PRODUCT SURFACE.
- THE PRODUCTS WHERE THE PART NUMBER END IN "LF" MEET THE EUROPEAN UNION DIRECTIVE AND OTHER COUNTRY REGULATIONS AS DESCRIBED IN GS-22-008.

mat'l. code				surface	tolerance	projection	product family
				ASME Y14.5	ASME Y14.5		TERMINAL BLOCK
ltr	ecn no	dr	date	tolerances unless otherwise specified			title
A	T10-0082	WL	080510	angles	X.±0.5	MM	TERMINAL BLOCK
B	T10-0140	WL	090310	to file	X.X±0.3	[INCH]	PLUGGABLE PLUG, BACK SIDE HOOK, W/FLANGE
C	T10-0158	WL	100410	X'±1"	X.XX±0.1	scale	
D	T11-0013	WL	040811	dr	WENDY CHEN	051810	sheet 1 of 5 size
				enr	JASON HSU	051810	dwg no
				chr	GARY HSIEH	051810	20020011
				appd	JOSEPH HSIA	051810	A4
sheet	revision	D	D	D	D	D	type
index	sheet	1	2	3	4	5	CUSTOMER Drawing

PRODUCT NUMBER	SERIES NAME	PITCH
20020011-CXXXXXXLF	02-350	3.50 mm

N = Number of poles  
 Dim A=Nx3.50[.138]  
 Dim B=(N-1)x3.50[.138]

poles	Dim A	Dim B
2-4p	±0.10[.004]	±0.10[.004]
5-7p	±0.15[.006]	±0.15[.006]
8-12p	±0.20[.008]	±0.20[.008]
13-18p	±0.25[.010]	±0.25[.010]
19-24p	±0.30[.012]	±0.30[.012]

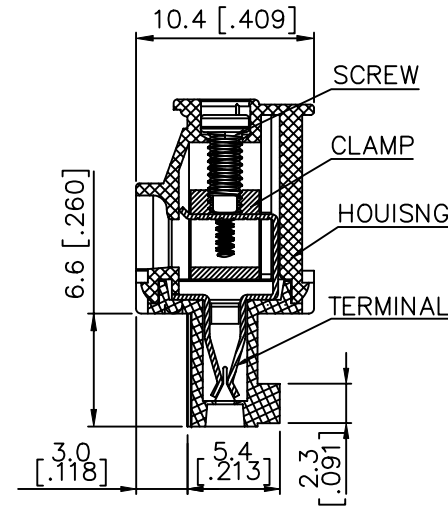
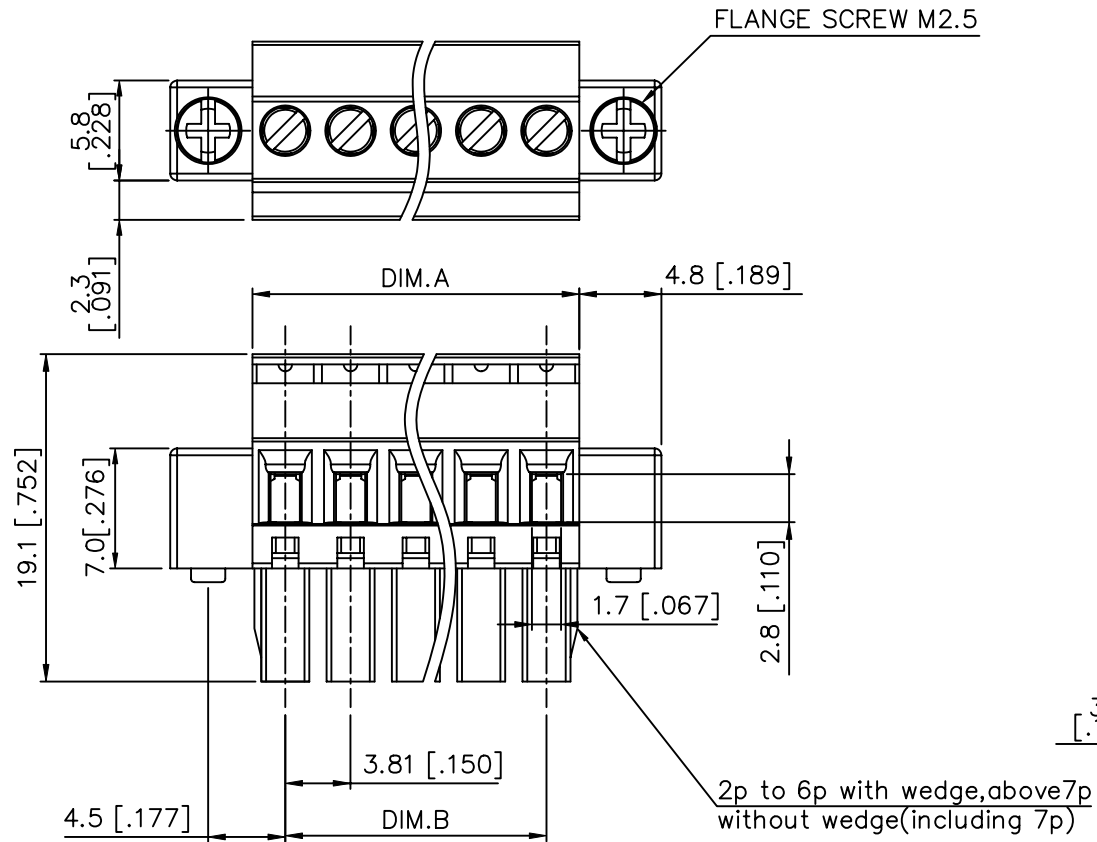


mat'l. code		surface ASME Y14.5	tolerance ASME Y14.5	projection [Symbol]	product family TERMINAL BLOCK
ltr	ecn no	dr	date	title TERMINAL BLOCK PLUGGABLE PLUG, BACK SIDE HOOK, W/FLANGE	
D		tolerances unless otherwise specified		MM [Symbol]	scale
angles		X.±0.5		[Symbol]	
X°±1'		X.X±0.3		[Symbol]	
		X.XX±0.1		[Symbol]	
dr		WENDY CHEN 051810		sheet 2 of 5 size	
enr		JASON HSU 051810		20020011 A4	
chr		GARY HSIEH 051810		type CUSTOMER Drawing	
appd		JOSEPH HSIA 051810		FCI	
sheet index	revision sheet				

PRODUCT NUMBER	SERIES NAME	PITCH
20020011-DXXXXXXLF	02-381	3.81 mm

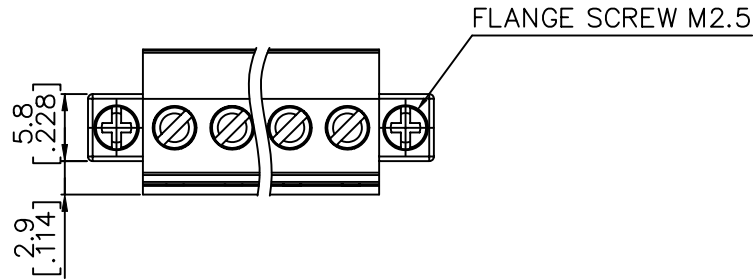
N = Number of poles  
 Dim A = N x 3.81 [.150]  
 Dim B = (N - 1) x 3.81 [.150]

poles	Dim A	Dim B
2-6P	±0.15 [.006]	±0.15 [.006]
7-12p	±0.20 [.008]	±0.20 [.008]
13-17p	±0.25 [.010]	±0.25 [.010]
18-24p	±0.30 [.012]	±0.30 [.012]



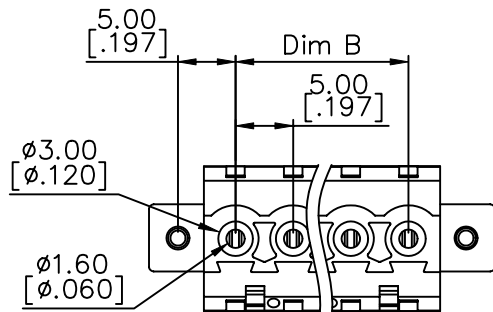
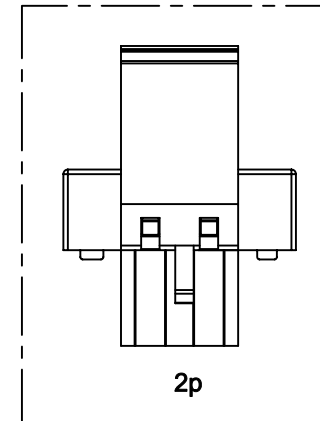
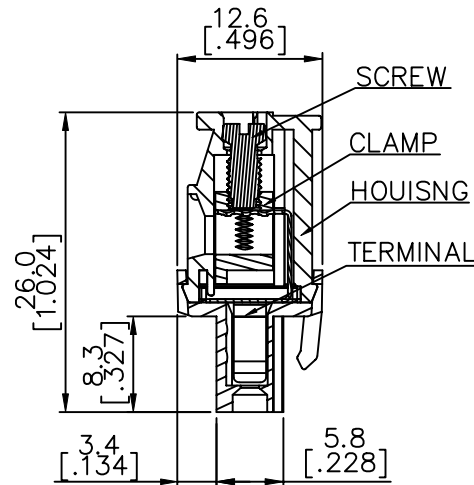
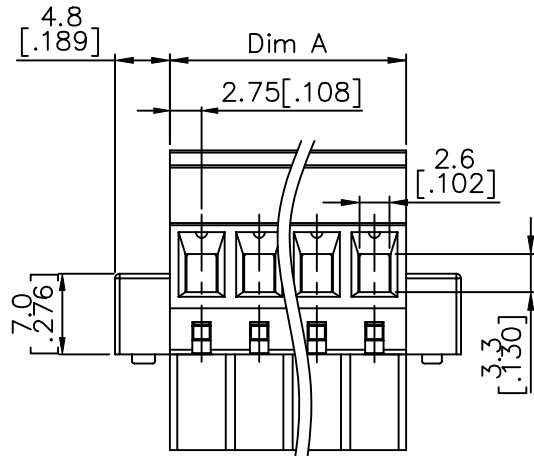
mat'l. code		surface ASME Y14.5	tolerance ASME Y14.5	projection	product family TERMINAL BLOCK
ltr	ecn no	dr	date	tolerances unless otherwise specified	title
D				angles X°±1'	TERMINAL BLOCK PLUGGABLE PLUG, BACK SIDE HOOK, W/FLANGE
				linear X.X±0.3	MM [INCH]
				total X.XX±0.1	scale
		dr	WENDY CHEN 051810		dwg no
		enr	JASON HSU 051810		sheet 3 of 5
		chr	GARY HSIEH 051810		20020011
		appd	JOSEPH HSIA 051810		A4
sheet index	revision sheet				type CUSTOMER Drawing

PRODUCT NUMBER	SERIES NAME	PITCH
20020011-GXXXXXXLF	02-500	5.00 mm



N = Number of poles  
 Dim A =  $N \times 5.00 [.197] + 0.5 [.020]$   
 Dim B =  $(N - 1) \times 5.00 [.197]$

poles	Dim A	Dim B
2-6p	$\pm 0.15 [.006]$	$\pm 0.15 [.006]$
7-12p	$\pm 0.20 [.008]$	$\pm 0.20 [.008]$
13-18p	$\pm 0.30 [.012]$	$\pm 0.30 [.012]$
19-24p	$\pm 0.40 [.016]$	$\pm 0.40 [.016]$



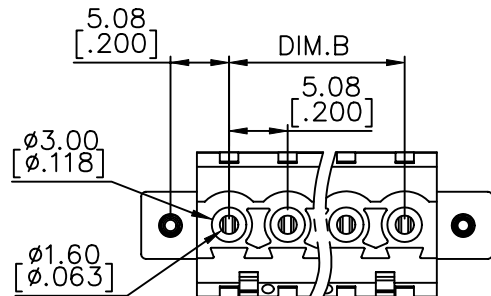
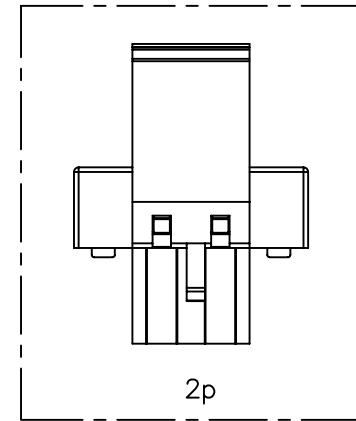
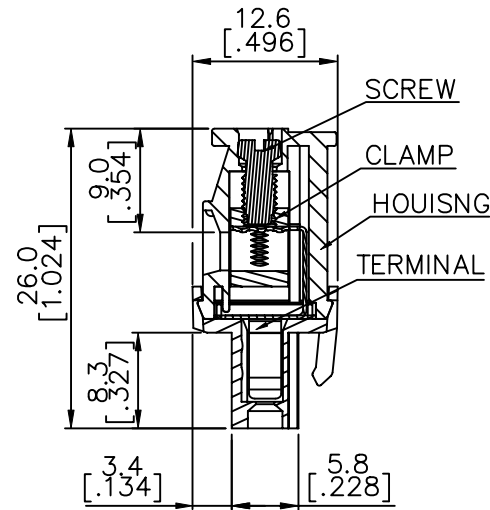
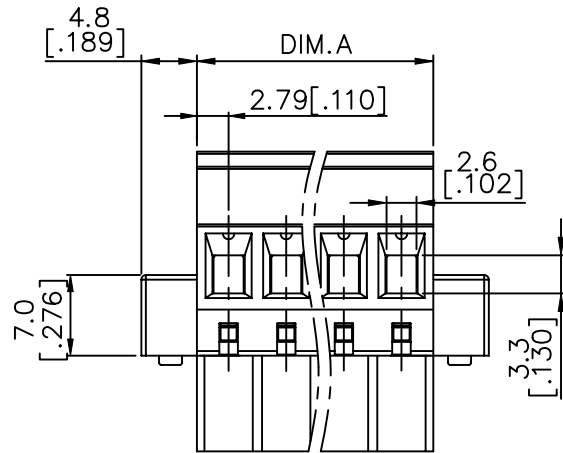
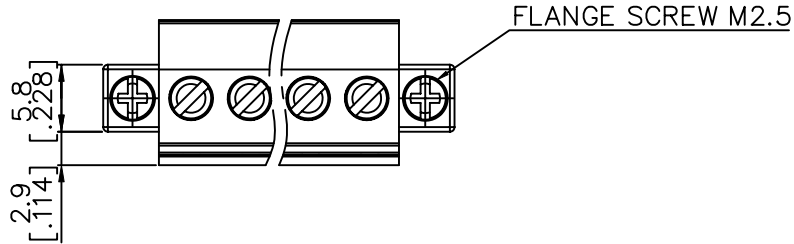
mat'l. code	surface ASME Y14.5	tolerance ASME Y14.5	projection [Symbol]	product family TERMINAL BLOCK
ltr	ecn no	dr	date	title
tolerances unless otherwise specified				TERMINAL BLOCK PLUGGABLE PLUG, BACK SIDE HOOK, W/FLANGE
D	angles	line	MM [INCH]	sheet 4 of 5 size
	$X \pm 1^\circ$	$X.X \pm 0.3$ $X.XX \pm 0.1$	scale	dwg no
	dr	WENDY CHEN	051810	20020011
	enr	JASON HSU	051810	A4
	chr	GARY HSIEH	051810	type
	appd	JOSEPH HSIA	051810	CUSTOMER Drawing
sheet index	revision sheet			



PRODUCT NUMBER	SERIES NAME	PITCH
20020011-HXXXXXLf	02-508	5.08 mm

N = Number of poles  
 Dim A =  $N \times 5.08 [ .200 ] + 0.5 [ .020 ]$   
 Dim B =  $(N - 1) \times 5.08 [ .200 ]$

poles	Dim A	Dim B
2-6p	$\pm 0.15 [ .006 ]$	$\pm 0.15 [ .006 ]$
7-12p	$\pm 0.20 [ .008 ]$	$\pm 0.20 [ .008 ]$
13-18p	$\pm 0.30 [ .012 ]$	$\pm 0.30 [ .012 ]$
19-24p	$\pm 0.40 [ .016 ]$	$\pm 0.40 [ .016 ]$



mat'l. code		surface ASME Y14.5	tolerance ASME Y14.5	projection MM INCH	product family TERMINAL BLOCK
ltr	ecn no	dr	date	title TERMINAL BLOCK PLUGGABLE PLUG, BACK SIDE HOOK, W/FLANGE	
D		angles		scale	sheet 5 of 5 size
		X ± 1°			dwg no
		X.X ± 0.3			20020011
		X.XX ± 0.1			A4
		dr	WENDY CHEN 051810	type CUSTOMER Drawing	
		enr	JASON HSU 051810		
		chr	GARY HSIEH 051810		
		appd	JOSEPH HSIA 051810		
sheet index	revision sheet				