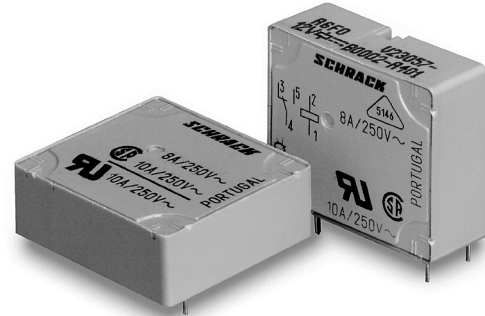


Power PCB Relay Card E

- 1 pole 8A, 1 form C (CO) or 1 form A (NO) contact
- 4kV coil-contact
- Vertical and horizontal version
- Version with bifurcated contacts
- Wash tight
- RoHS compliant (Directive 2002/95/EC)



F0151-B



Typical applications
I/O modules, heating control, timers

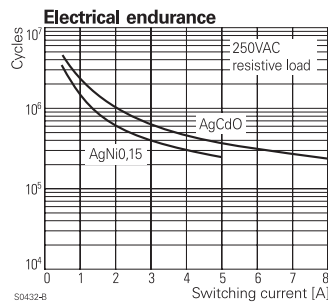
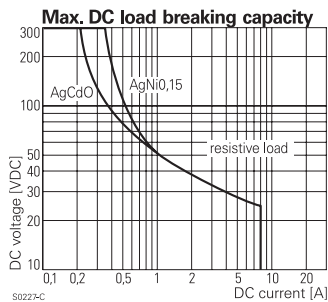
Approvals

VDE REG.-Nr. 5146, UL E214025
Technical data of approved types on request

Contact Data	8A	5A	bifurcated
Contact arrangement	1 form C (CO) or 1 form A (NO)		
Rated voltage	250VAC		
Max. switching voltage	400VAC		
Rated current	8A	5A	5A
Limiting making current, max 4 s, duty factor 10%	15A	-	-
Breaking capacity max.	2000VA	1250VA	1250VA
Contact material	AgCdO, AgNi20	AgNi0.15	AgNi0.15
Contact style	single contact	single contact	bifurcated contact
Frequency of operation, with/without load	360/72000h ⁻¹		
Operate/release time typ.	7/3ms		
Bounce time typ., form A/form B	0.5/3ms		

Contact ratings	Type	Contact	Load	Cycles
IEC61810				
	AgCdO	C (CO)	8A, 250VAC, resistive, 70°C	20x10 ³
	AgNi20	C (CO)	8A, 250VAC, resistive 70°C	20x10 ³
	AgCdO	A (NO)	8A, 250VAC, resistive, 70°C	20x10 ³
	AgNi20	A (NO)	8A, 250VAC, resistive, 70°C	30x10 ³
	AgNi0.15	A (NO)	5A, 250VAC, resistive, 70°C	20x10 ³

Mechanical endurance >20x10⁶ operations



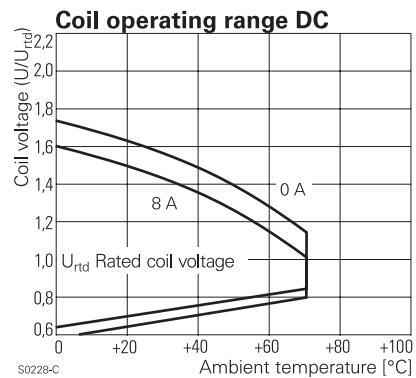
Coil Data

Coil voltage range 6 to 60VDC

Coil versions, DC coil

Coil code	Rated voltage VDC	Operate voltage VDC	Release voltage VDC	Coil resistance Ω±15% ¹⁾	Rated coil power mW
001	6	4.0	0.6	80 ¹⁾	450
002	12	8.0	1.2	330 ¹⁾	436
006	24	16.0	2.4	1200	480
013	48	32.0	4.8	4700	490
023	60	40.0	6.0	7200	500

1) Coil resistance ±10%.
All figures are given for coil without pre-energization, at ambient temperature +23°C.
Other coil voltages on request.



Insulation Data

Initial dielectric strength	
between open contacts	1000V _{rms}
between contact and coil	4000V _{rms}
Clearance/creepage	
between contact and coil	≥4/4mm
Material group of insulation parts	IIIa
Tracking index of relay base	PTI225V

Power PCB Relay Card E (Continued)

Other Data

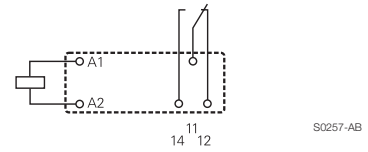
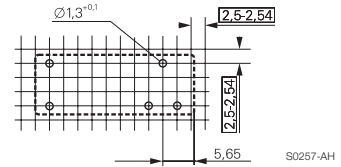
Material compliance: EU RoHS/ELV, China RoHS, REACH, Halogen content refer to the Product Compliance Support Center at www.te.com/customersupport/rohssupportcenter

Ambient temperature	-40 to +70°C
Category of environmental protection	RTIII - wash tight
IEC 61810	
Terminal type	PCB-THT
Mounting distance	5mm
Weight	14g
Resistance to soldering heat THT	
IEC 60068-2-20	260°C/5s
Packaging/unit	tube/20 pcs., box/400 pcs.

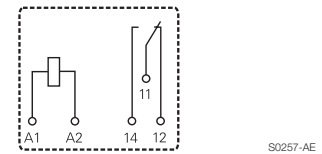
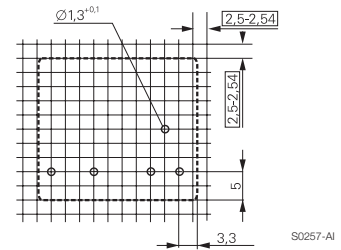
PCB layout / terminal assignment

Bottom view on solder pins

Vertical version

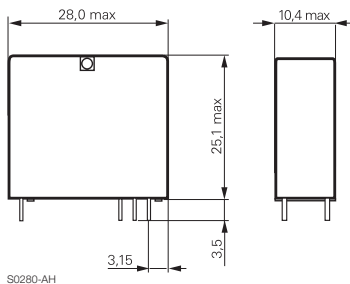


Horizontal version

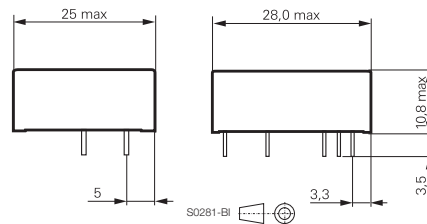


Dimensions

Vertical version



Horizontal version



Power PCB Relay Card E (Continued)

Product code structure		Typical product code		V23057	-A	0	006	-A	1	01
Type		V23057 Power PCB Relay Card E								
Version		A Horizontal B Vertical								
Version		0 Standard								
Coil		Coil code: please refer to coil versions table								
Contact set		A Single contact B Bifurcated contact (form C/CO version only)								
Contact material		1 AgNi 0.15 4 AgCdO								
Contact configuration		01 1 form C contact (1 CO) 02 1 form A contact (1 NO)								

Product code	Version	Contact arrangement	Contact material	Coil	Part number
V23057-A0002-A101	Horizontal	1 form C (CO) contact	AgNi0.15	12VDC	1393215-4
V23057-A0002-A401			AgCdO		1393215-9
V23057-A0006-A101			AgNi0.15	24VDC	2-1393215-1
V23057-A0006-A201			AgNi 20		2-1393215-3
V23057-A0006-A401	Vertical	1 form C (CO) contact	AgCdO	6VDC	2-1393215-5
V23057-B0001-A101			AgNi0.15		6-1393215-6
V23057-B0002-A101			12VDC	6-1393215-7	
V23057-B0002-A201				AgNi 20	6-1393215-9
V23057-B0002-A401			AgCdO	7-1393215-1	
V23057-B0006-A101			24VDC	AgNi0.15	7-1393215-5
V23057-B0006-A102				1 form A (NO) contact	7-1393215-9
V23057-B0006-A201				1 form C (CO) contact	8-1393215-1
V23057-B0006-A401				AgNi 20	8-1393215-5
V23057-B0006-A402			1 form A (NO) contact	8-1393215-6	
V23057-B3006-A101	1 form C (CO) contact	AgNi0.15	60VDC	2-1393216-6	
V23057-B3023-A101				2-1393216-8	

This list represents the most common types and does not show all variants covered by this datasheet.
Other types on request