

MICRO SWITCH
a Honeywell Division

SWITCH - BASIC

1SM3-T

FED. MFG. CODE 91929

(M) 1SM3-T
ISSUE 1

1SM3-T

CATALOG LISTING

PAGE 1 OF 1

REPLACES

RELEASE NO.

M

ISSUE
10

CHECK

REVISIONS

A	CO-82802C	J J A	7 JAN 97
B	CO-95172	J J A	18 JUNE 99
C	CO95591		
	DLT		29 OCT 99

CHECK

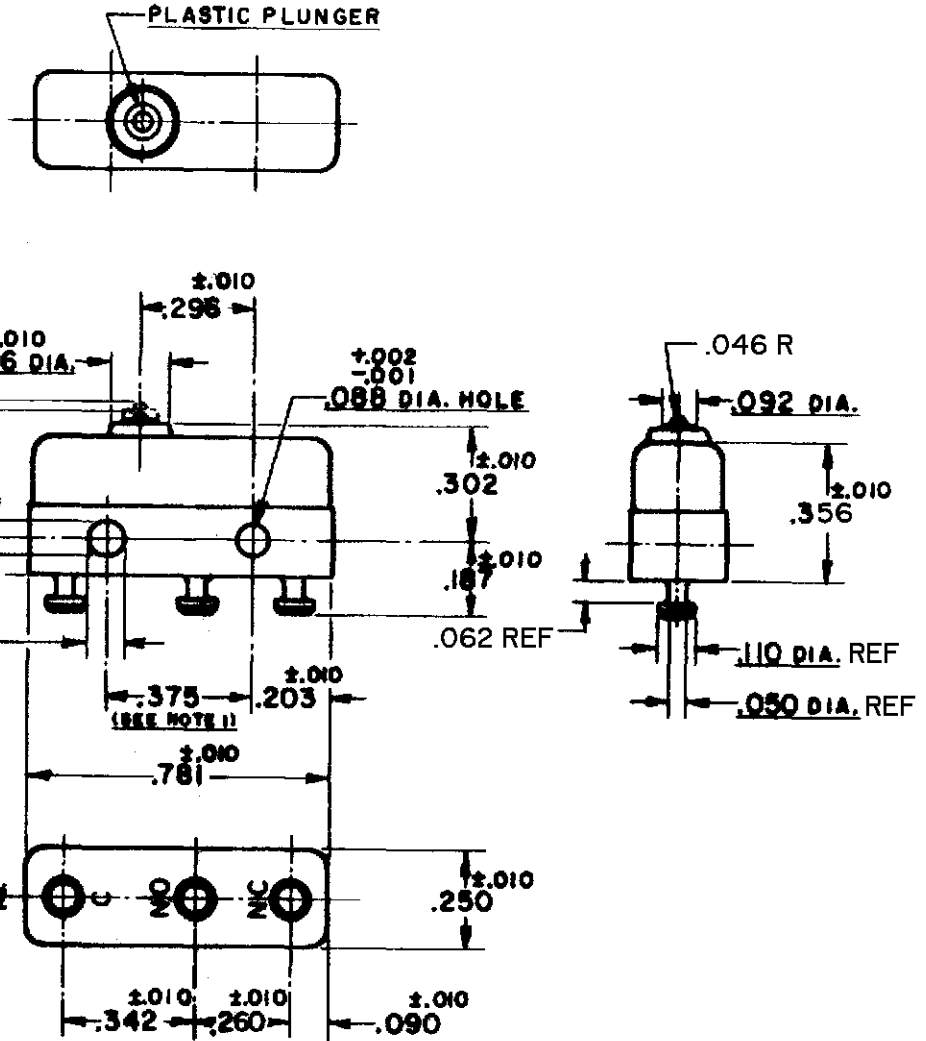
SAV 17 JAN 97

CHECK

JJA 7 JAN 97

FORMTEK

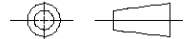
DRAWN



- NOTE-**
- 1- MOUNTING HOLES WILL ACCEPT PINS OR SCREWS OF .087 MAX. DIA. ON .375 ±.002 CENTERS.
 - 2- TERMINALS ARE PLATED FOR SOLDERING.
 - 3- SWITCH WILL WITHSTAND TEMPERATURE OF 250°F.

THIS DRAWING COVERS A PROPRIETARY ITEM AND IS THE PROPERTY OF MICRO SWITCH, A DIVISION OF HONEYWELL. THIS DRAWING IS NOT TO BE COPIED OR USED WITHOUT THE APPROVAL OF MICRO SWITCH.

THIRD ANGLE PROJECTION



CHARACTERISTICS	
OPERATING FORCE	----- 3-5 OZ.
RELEASE FORCE	----- 1 OZ. MIN.
DIFFERENTIAL TRAVEL	----- .004 MAX.
OVERTRAVEL	----- .005 MIN.

ELECTRICAL DATA		
CONTACT ARRANGEMENT S P D T		
30 VOLTS DC RATING		
	SEA LEVEL	50,000 FT
INDUCTIVE	3 AMP	2.5 AMP
RESISTIVE	5 AMP	5 AMP
MAXIMUM INRUSH		24 AMP

SCALE	2:1	DO NOT SCALE PRINT
UNLESS OTHERWISE SPECIFIED TOLERANCES ARE		
ONE PLACE	(.0)	±.030
TWO PLACE	(.00)	±.015
THREE PLACE	(.000)	±.005
ANGLES		±
WEIGHT	.006 LB MAX	

L4 5A 250 VAC