

10 9 8 7 6 5 4 3 2 1

F

E

D

C

B

A

F

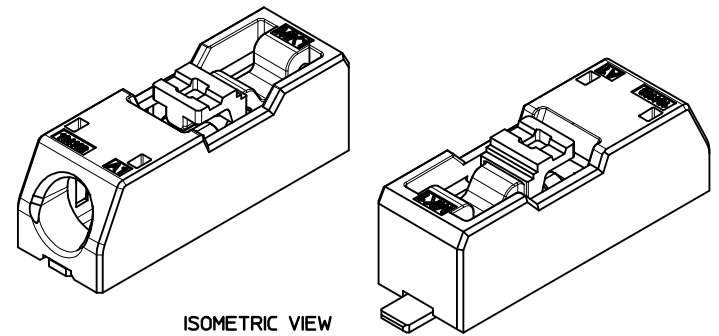
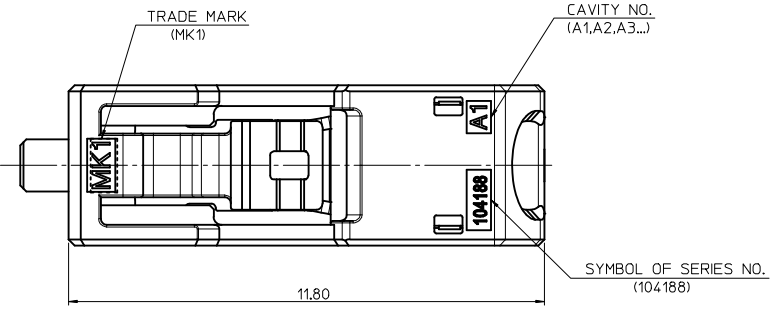
E

D

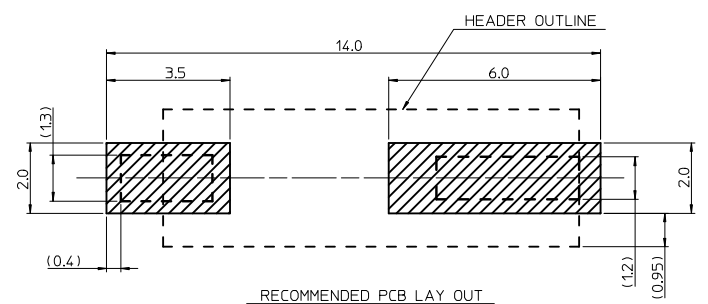
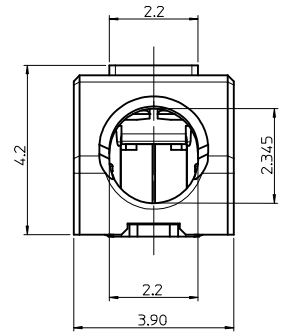
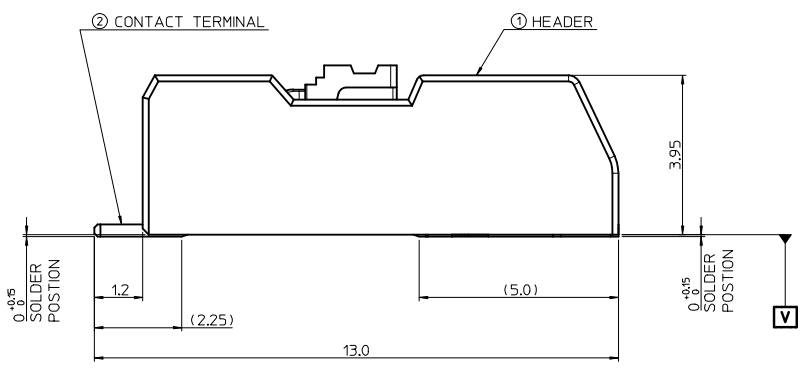
C

B

A



ISOMETRIC VIEW

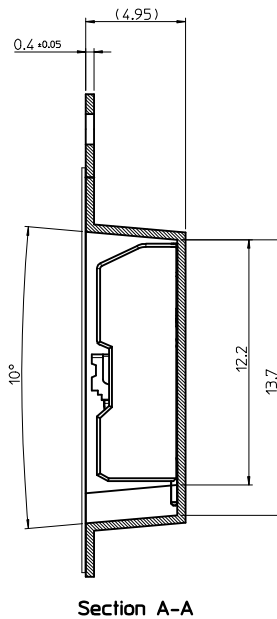
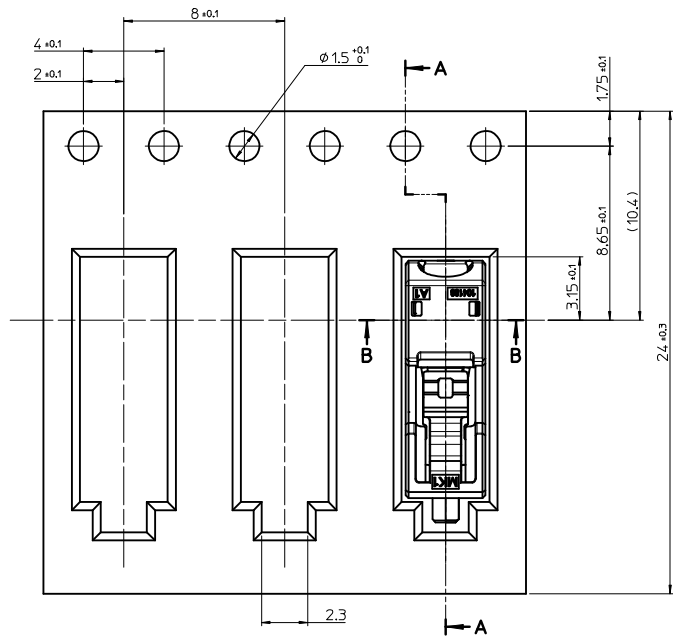


RECOMMENDED PCB LAY OUT  
[GENERAL TOLERANCE : ±0.05]

- NOTE
- MATERIAL
    - HEADER : LIQUID CRYSTAL POLYMER(LCP) UL94V-0, HALOGEN FREE, COLOR OF NATURAL
    - CONTACT TERMINAL : COPPER-ALLOY, 0.3mm THICKNESS
  - PLATING
    - CONTACT TERMINAL : PRE-TIN PLATED 1.04μm MINIMUM TIN PLATING
  - PRODUCT SPECIFICATION : PS-104188-001
  - PACKAGING SPECIFICATION : PK-104188-001
  - COPLANALITY OF SOLDER TAILS (PEAK TEMP. : 260°C), BEFORE & AFTER REFLOW : 0.08 MAX.
  - APPLICABLE WIRE RANGE : (OUTSIDE WIRE INSULATION : 2.1mm DIAMETER MAX.)
    - SOLID WIRE : AWG #24~#18
    - STRAND WIRE : AWG #22~#20

|                                                                                                                             |                  |                                                                          |                                                                                                                                    |                 |       |                                                         |                        |  |
|-----------------------------------------------------------------------------------------------------------------------------|------------------|--------------------------------------------------------------------------|------------------------------------------------------------------------------------------------------------------------------------|-----------------|-------|---------------------------------------------------------|------------------------|--|
| PRELIMINARY REVISED<br>EC NO: KOR2014-0075<br>DRWN: JSSHIN 2013/12/24<br>CHKD: SHCHU 2013/12/24<br>APPR: YSK1M02 2013/12/24 | DESCRIPTION<br>A | QUALITY SYMBOLS                                                          | GENERAL TOLERANCES (UNLESS SPECIFIED)                                                                                              | DIMENSION STYLE | SCALE | DESIGN UNITS                                            | THIRD ANGLE PROJECTION |  |
|                                                                                                                             |                  | ▽=0<br>◻=0                                                               | mm    INCH<br>4 PLACES ± --- ± ---<br>3 PLACES ± --- ± ---<br>2 PLACES ± 0.15 ± ---<br>1 PLACE ± 0.20 ± ---<br>0 PLACE ± --- ± --- | MM ONLY         | 8:1   | METRIC                                                  |                        |  |
|                                                                                                                             |                  | ANGULAR ± 1 °<br>DRAFT WHERE APPLICABLE<br>MUST REMAIN WITHIN DIMENSIONS | DRAWN BY: JSSHIN    DATE: 2013/03/11<br>CHECKED BY: SHCHU    DATE: 2013/03/11<br>APPROVED BY: YSK1M02    DATE: 2013/12/24          | TITLE           |       | LITE-TRAP™ SMT CONNECTOR, 1 CIRCUIT<br><br><b>molex</b> |                        |  |
|                                                                                                                             |                  |                                                                          | MATERIAL NO. 1041880110<br>DOCUMENT NO. SD-104188-001<br>SHEET NO. 1 OF 1                                                          |                 |       |                                                         |                        |  |

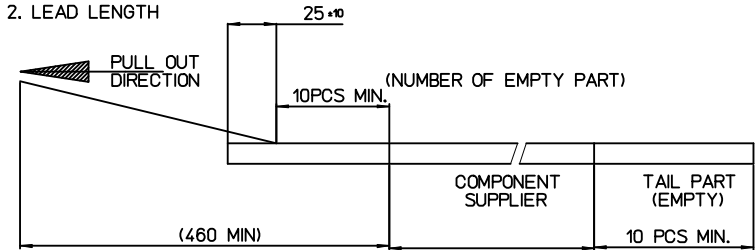
9 8 7 6 5 4 3 2 1



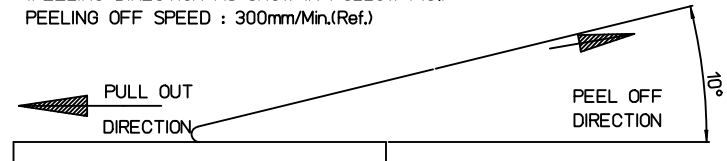
NOTES

1. QUANTITY OF CONNECTORS : 2,500 PCS/REEL

2. LEAD LENGTH



3. PEELING OFF FORCE OF COVER TAPE : 0.1N~0.59N(10.20F~60GF)  
(PEELING DIRECTION AS SHOW IN FOLLOW FIG.)  
PEELING OFF SPEED : 300mm/Min.(Ref.)

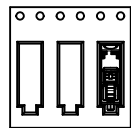


4. FLASH IN ANY PORTION SHOULD BE LESS THAN 0.20mm MAX.

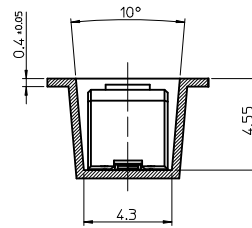
5. UNLESS OTHERWISE SPECIFIED INNER R0.2 MAX

[TABLE]

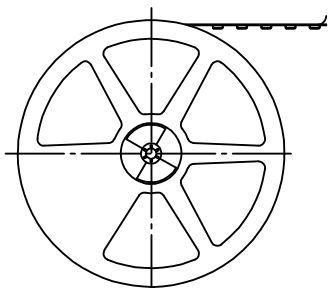
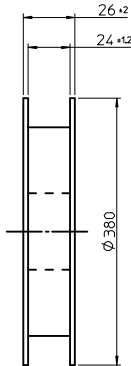
|              |             |         |            |             |
|--------------|-------------|---------|------------|-------------|
| 1041880110   | 104188-0110 | NATURAL | 24.0mm     | 104188-9001 |
| MATERIAL NO. | NO.         | COLOR   | TAPE WIDTH | EMBOSS TAPE |
|              | CONNECTOR   |         |            |             |



PULL OUT DIRECTION



Section B-B



PLASTIC BOBBIN

|                                                                                                                           |                               |                                                      |              |                                                                                                                               |          |              |                        |                                                                 |
|---------------------------------------------------------------------------------------------------------------------------|-------------------------------|------------------------------------------------------|--------------|-------------------------------------------------------------------------------------------------------------------------------|----------|--------------|------------------------|-----------------------------------------------------------------|
| ENTER DESCRIPTION<br>EC NO: KOR2014-0075<br>DRWN: JSSHIN 2013/12/21<br>CHKD: SHCHU 2013/12/21<br>APPR: YSKIM02 2013/12/24 | QUALITY SYMBOLS<br>▽=0<br>∇=0 | GENERAL TOLERANCES (UNLESS SPECIFIED)                |              | DIMENSION STYLE                                                                                                               | SCALE    | DESIGN UNITS | THIRD ANGLE PROJECTION |                                                                 |
|                                                                                                                           |                               | mm                                                   | INCH         | MM ONLY                                                                                                                       | 4/1      | METRIC       |                        |                                                                 |
|                                                                                                                           |                               | 4 PLACES                                             | ± ---        | ± ---                                                                                                                         | DRAWN BY | DATE         |                        | TITLE                                                           |
|                                                                                                                           |                               | 3 PLACES                                             | ± ---        | ± ---                                                                                                                         | JSSHIN   | 2013/03/12   |                        | S-POKE CONN. -1P<br>LITE-TRAP™ SMT CONN 1CKT<br>EMBOSSD PACKAGE |
| 2 PLACES                                                                                                                  | ± 0.20                        | ± ---                                                | CHECKED BY   | DATE                                                                                                                          |          |              |                        |                                                                 |
| 1 PLACE                                                                                                                   | ± 0.20                        | ± ---                                                | SHCHU        | 2013/03/12                                                                                                                    |          |              |                        |                                                                 |
| 0 PLACE                                                                                                                   | ± ---                         | ± ---                                                | APPROVED BY  | DATE                                                                                                                          |          |              |                        |                                                                 |
|                                                                                                                           |                               |                                                      | YSKIM02      | 2013/12/24                                                                                                                    |          |              |                        |                                                                 |
|                                                                                                                           |                               | ANGULAR ± 3 °                                        | MATERIAL NO. | DOCUMENT NO.                                                                                                                  |          |              |                        |                                                                 |
|                                                                                                                           |                               | DRAFT WHERE APPLICABLE MUST REMAIN WITHIN DIMENSIONS | 1041880110   | SD-104188-002                                                                                                                 |          |              |                        |                                                                 |
|                                                                                                                           |                               |                                                      | SIZE A3      | THIS DRAWING CONTAINS INFORMATION THAT IS PROPRIETARY TO MOLEX INCORPORATED AND SHOULD NOT BE USED WITHOUT WRITTEN PERMISSION |          |              |                        |                                                                 |