

360° SOFT EMI BEZEL GASKET
 COMPLIES WITH (SFP) MSA
 BOARD AND BEZEL LOCATIONS

18 UNDER BELLY EMI PINS

EMI FINGERS
 CONTACT ADAPTER

INNER WALL TABS ARE COINED
 OVER BASE AND COVER FOR RIGIDITY

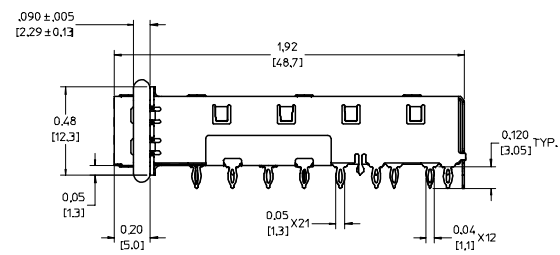
TABS USED TO ATTACH
 LIGHT PIPE COVER

GASKET SEAM LOCATED
 ON SIDE OF CAGE

DIMENSIONS OF EACH INNER CAGE DESIGNED
 TO FUNCTION WITH SMALL FORM-FACTOR
 PLUGGABLE (SFP) TRANSCEIVER

NOTES:

- PRESS FIT LEGS 0.120" LONG-
 0.062 [1.57] MINIMUM PCB THICKNESS FOR SINGLE SIDED USE.
 0.118 [3.00] MINIMUM PCB THICKNESS FOR BELLY TO BELLY USE.
 INSERTION FORCE INTO PCB: <100 LBS.
- MATERIAL: COPPER ALLOY
 PLATING: NONE
 NOTE: A PRE-PLATED NICKEL VERSION IS AVAILABLE. REFERENCE
 DOCUMENT SD-74747-004 FOR DETAILS.
- REFERENCE DOCUMENTS:
 PRODUCT SPECIFICATION: PS-74728-000
 COSMETIC SPECIFICATIONS: WI-HP-7-2774 AND WI-HPA-7-0093
- MATES WITH SERIES 74748, LIGHT PIPE COVER ASSEMBLY.
- THIS PART MEETS THE RESTRICTION OF HAZARDOUS SUBSTANCES IN
 ELECTRICAL AND ELECTRONIC EQUIPMENT (ROHS) DIRECTIVE (2002/95/EC).



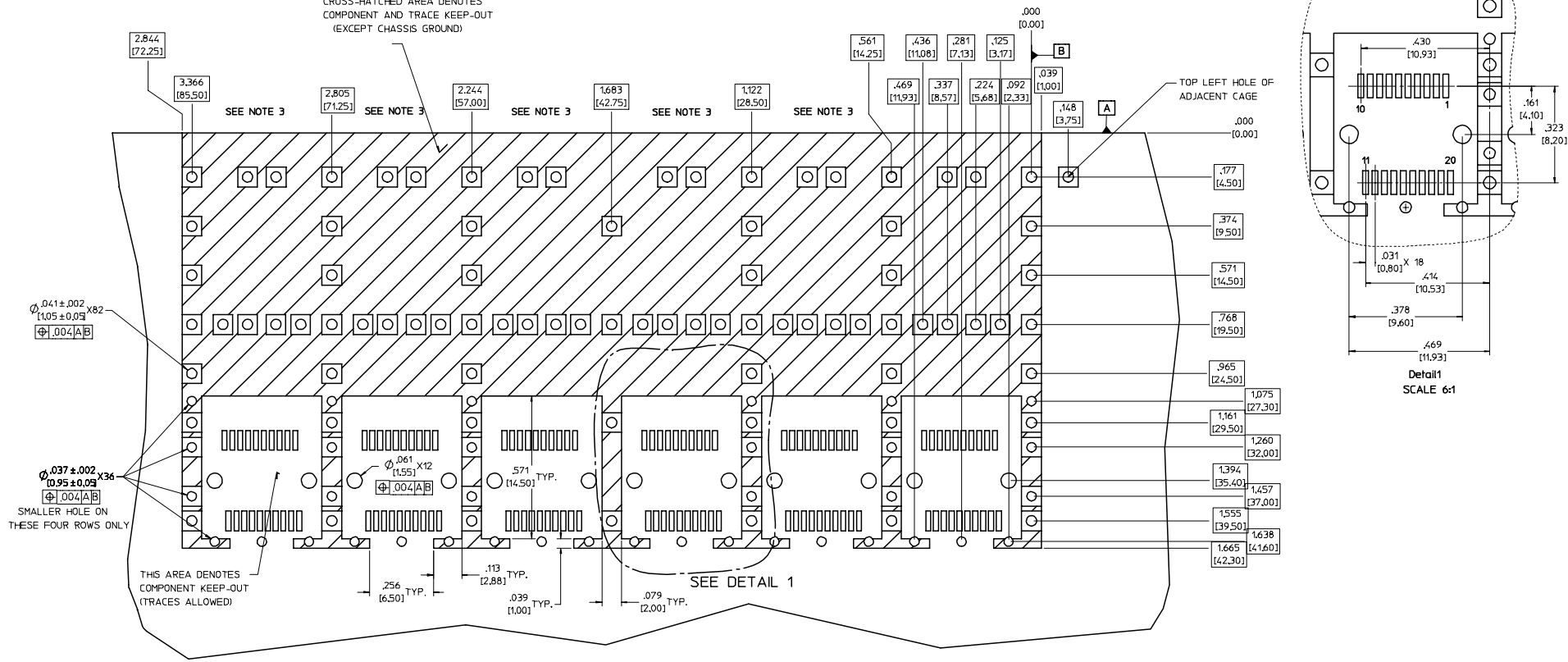
EC NO: USY2006-0222 DRW:KSIMONSO06/01/24 CHK:D.BRUSSELL2006/01/24 APPR:BRUSSELL2006/01/25 REV DESCRIPTION	QUALITY SYMBOLS	GENERAL TOLERANCES (UNLESS SPECIFIED)	SCALE 3:1	DESIGN UNITS METRIC	THIRD ANGLE PROJECTION	REVISE ON CAD ONLY
	▽ 0	4 PLACES ± --- ± --- 3 PLACES ± --- ± .005 2 PLACES ± 0.13 ± .007 1 PLACE ± 0.18 ± ---	mm INCH	DIMENSION STYLE IN/MM	TITLE	
	∇ 0	ANGULAR ± 1°		DRAWN BY DATE K.SIMONSO 2004/07/08	1X6 SFP GANGED CAGE ASSEMBLY, PRESS FIT	
		DRAFT WHERE APPLICABLE MUST REMAIN WITHIN DIMENSIONS		CHECKED BY DATE BRUSSELL 2004/07/08		MOLEX INCORPORATED MATERIAL NO. 747470001 DOCUMENT NO. SD-74747-001 SHEET NO. 1 OF 5
		THIS DRAWING CONTAINS INFORMATION THAT IS PROPRIETARY TO MOLEX INCORPORATED AND SHOULD NOT BE USED WITHOUT WRITTEN PERMISSION				

20 19 18 17 16 15 14 13 12 11 10 9 8 7 6 5 4 3 2 1

PCB LAYOUT FOR BELLY TO BELLY MOUNTING

HOST CONNECTOR DETAIL

CROSS-HATCHED AREA DENOTES COMPONENT AND TRACE KEEP-OUT (EXCEPT CHASSIS GROUND)



NOTES:

1. PADS AND VIAS GO TO CHASSIS GROUND, (94 PLACES). RECOMMENDED PADS TO BE 2mm SQUARE.
2. PLATING OPTIONAL FOR THROUGH HOLES, (24 PLACES).
3. HOLE PATTERN REPEATS FOR EACH PORT. SPACING BETWEEN PORTS IS 14.25mm.

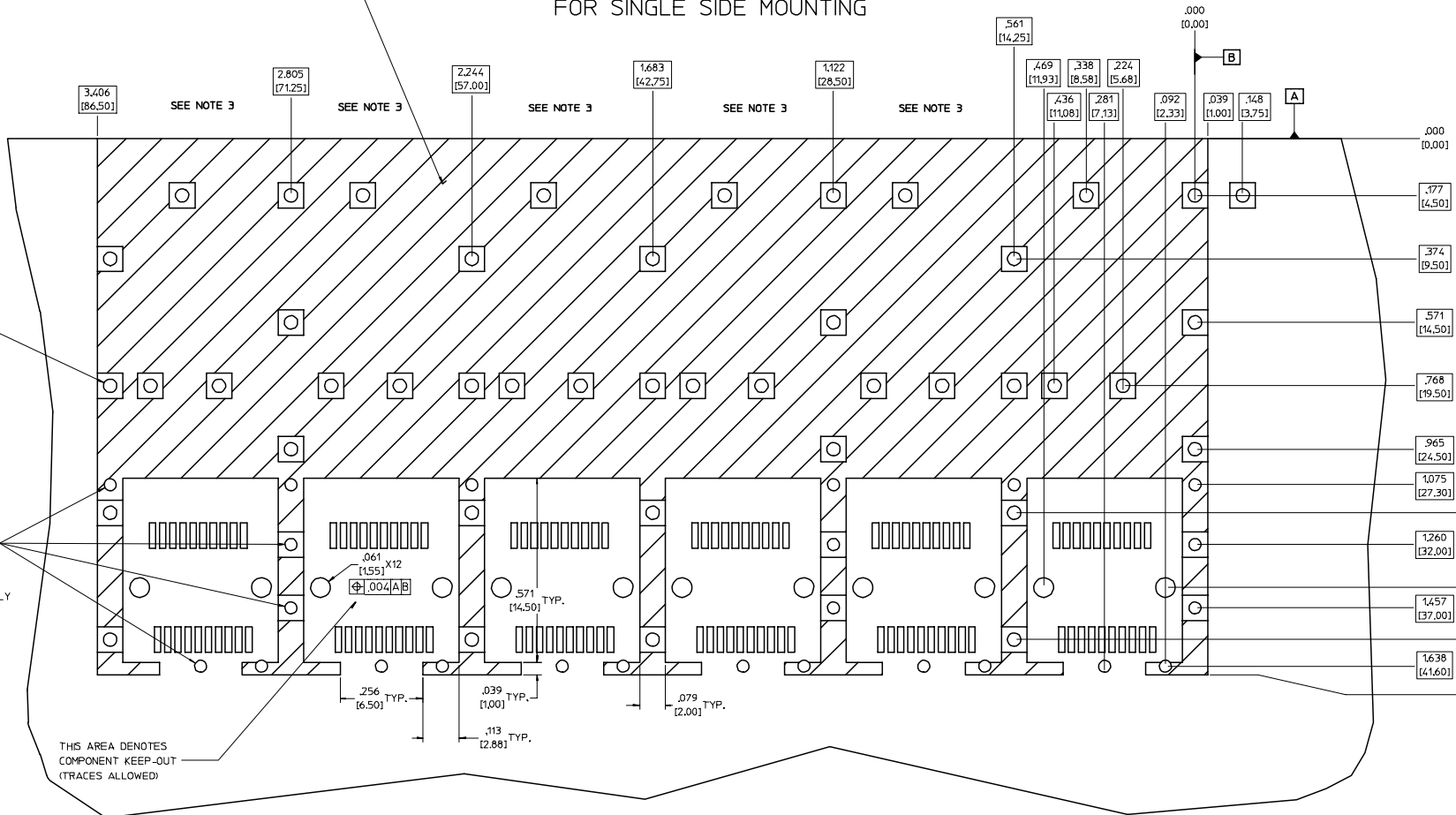
EC NO: USY2006-0222 DRW:KSIMONSON06/01/24 CHK:D.BRUSSELL2006/01/24 APPR:BRUSSELL2006/01/25 REV DESCRIPTION	QUALITY SYMBOLS	GENERAL TOLERANCES (UNLESS SPECIFIED)	SCALE 5:1	DESIGN UNITS METRIC	THIRD ANGLE PROJECTION	REVISE ON CAD ONLY
	▽.0	4 PLACES ±.005	mm INCH	DIMENSION STYLE IN/MM	TITLE	
	▽.0	3 PLACES ±.005		DRAWN BY DATE	1X6 SFP GANGED CAGE ASSEMBLY, PRESS FIT	
		2 PLACES ±.013		KSIMONSO 2004/07/08	MOLEX INCORPORATED	
	1 PLACE ±.018	ANGULAR ± 1°	CHECKED BY DATE	MATERIAL NO. DOCUMENT NO. SHEET NO.		
		DRAFT WHERE APPLICABLE MUST REMAIN WITHIN DIMENSIONS	BRUSSELL 2004/07/08	747470001	SD-74747-001	2 OF 5
			APPROVED BY DATE	THIS DRAWING CONTAINS INFORMATION THAT IS PROPRIETARY TO MOLEX INCORPORATED AND SHOULD NOT BE USED WITHOUT WRITTEN PERMISSION		
			BRUSSELL 2004/07/08			

19 18 17 16 15 14 13 12 11 10 9 8 7 6 5 4 3 2 1

20 19 18 17 16 15 14 13 12 11 10 9 8 7 6 5 4 3 2 1

PCB LAYOUT
FOR SINGLE SIDE MOUNTING

CROSS-HATCHED AREA DENOTES
COMPONENT AND TRACE KEEP-OUT
(EXCEPT CHASSIS GROUND)



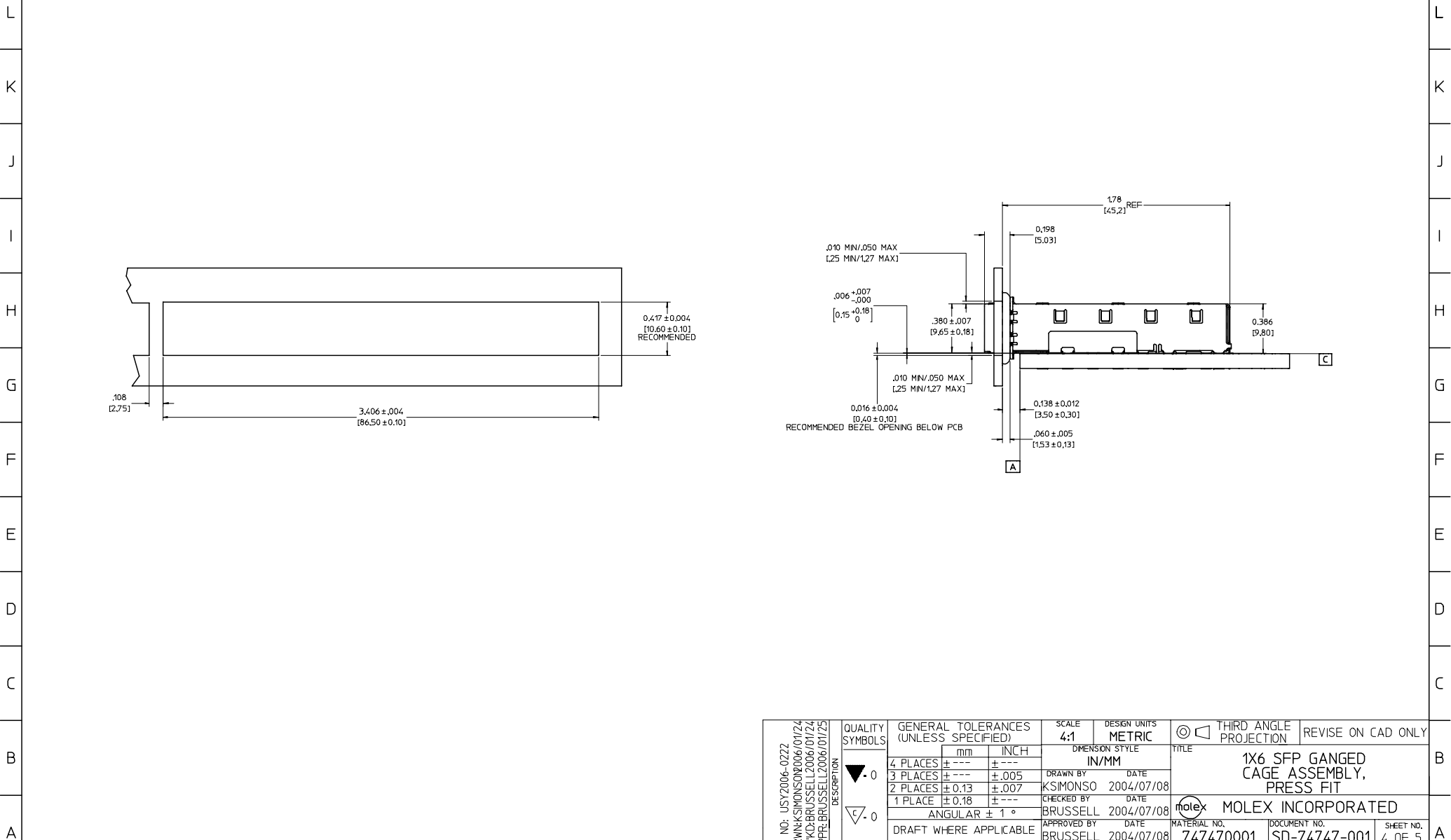
NOTES:

- PADS AND VIAS GO TO CHASSIS GROUND. (48 PLACES).
RECOMMENDED PADS TO BE 2mm SQUARE.
- PLATING OPTIONAL FOR THROUGH HOLES. (18 PLACES).
- HOLE PATTERN REPEATS FOR EACH PORT.
SPACING BETWEEN PORTS IS 14.25mm.

EC NO: USY2006-0222 DRW:KSIMONSON006/01/24 CHKD:BRUSSELL2006/01/24 APPR:BRUSSELL2006/01/25 REV:	QUALITY SYMBOLS	GENERAL TOLERANCES (UNLESS SPECIFIED)	SCALE 6:1	DESIGN UNITS METRIC	THIRD ANGLE PROJECTION	REVISE ON CAD ONLY	
	0 0	4 PLACES ± --- ± --- 3 PLACES ± --- ± .005 2 PLACES ± 0.13 ± .007 1 PLACE ± 0.18 ± --- ANGULAR ± 1°	DIMENSION STYLE IN/MM DRAWN BY K SIMONSON DATE 2004/07/08 CHECKED BY BRUSSELL DATE 2004/07/08 APPROVED BY BRUSSELL DATE 2004/07/08	TITLE 1X6 SFP GANGED CAGE ASSEMBLY, PRESS FIT MOLEX MOLEX INCORPORATED MATERIAL NO. 747470001 DOCUMENT NO. SD-74747-001 SHEET NO. 3 OF 5			
		DRAFT WHERE APPLICABLE MUST REMAIN WITHIN DIMENSIONS		THIS DRAWING CONTAINS INFORMATION THAT IS PROPRIETARY TO MOLEX INCORPORATED AND SHOULD NOT BE USED WITHOUT WRITTEN PERMISSION			

19 18 17 16 15 14 13 12 11 10 9 8 7 6 5 4 3 2 1

20 19 18 17 16 15 14 13 12 11 74747 9 8 7 6 5 4 3 2 1



EC NO: USY2006-0222 DRW:KSIMONSO06/01/24 CHK:D:BRUSSELL2006/01/24 APPR:BRUSSELL2006/01/25 REV:	QUALITY SYMBOLS	GENERAL TOLERANCES (UNLESS SPECIFIED)		SCALE 4:1	DESIGN UNITS METRIC	THIRD ANGLE PROJECTION	REVISE ON CAD ONLY
	▼ 0 ∇ 0	4 PLACES	mm	INCH	DIMENSION STYLE IN/MM		TITLE 1X6 SFP GANGED CAGE ASSEMBLY, PRESS FIT MOLEX INCORPORATED
		3 PLACES	± ---	± ---	DRAWN BY KSIMONSO	DATE 2004/07/08	
		2 PLACES	± 0.13	± .007	CHECKED BY BRUSSELL	DATE 2004/07/08	
	1 PLACE	± 0.18	± ---	APPROVED BY BRUSSELL	DATE 2004/07/08	MATERIAL NO. 747470001	DOCUMENT NO. SD-74747-001
	ANGULAR ± 1 °		DRAFT WHERE APPLICABLE MUST REMAIN WITHIN DIMENSIONS		SHEET NO. 4 OF 5		
THIS DRAWING CONTAINS INFORMATION THAT IS PROPRIETARY TO MOLEX INCORPORATED AND SHOULD NOT BE USED WITHOUT WRITTEN PERMISSION							

19 18 17 16 15 14 13 12 11 10 9 8 7 6 5 4 3 2 1

20 | 19 | 18 | 17 | 16 | 15 | 14 | 13 | 12 | 11 | 74747 | 9 | 8 | 7 | 6 | 5 | 4 | 3 | 2 | 1

DATE	REV	CHANGES	COMMENTS
3/1/2004	1	PRELIMINARY	N/A
07/08/2004	A	INITIAL RELEASE	CHANGED GASKET TO 0.090 DIA AND CHANGED LOCATION.
01/19/2006	B	ADDED PCB AND BEZEL LAYOUT. ADDED NOTE FOR GASKET SEAM PLACEMENT.	N/A

EC NO: USY2006-0222 DRW:KSIMONSO06/01/24 CHK:D:BRUSSELL2006/01/24 APPR:BRUSSELL2006/01/25	QUALITY SYMBOLS	GENERAL TOLERANCES (UNLESS SPECIFIED)	SCALE 1:1	DESIGN UNITS METRIC	THIRD ANGLE PROJECTION	REVISE ON CAD ONLY																					
	0 0	<table border="1"> <thead> <tr> <th></th> <th>mm</th> <th>INCH</th> </tr> </thead> <tbody> <tr> <td>4 PLACES</td> <td>± ---</td> <td>± ---</td> </tr> <tr> <td>3 PLACES</td> <td>± ---</td> <td>± .005</td> </tr> <tr> <td>2 PLACES</td> <td>± 0.13</td> <td>± .007</td> </tr> <tr> <td>1 PLACE</td> <td>± 0.18</td> <td>± ---</td> </tr> </tbody> </table>		mm	INCH	4 PLACES	± ---	± ---	3 PLACES	± ---	± .005	2 PLACES	± 0.13	± .007	1 PLACE	± 0.18	± ---	<table border="1"> <thead> <tr> <th colspan="2">DIMENSION STYLE</th> </tr> <tr> <th>IN/MM</th> <th>DATE</th> </tr> </thead> <tbody> <tr> <td>IN/MM</td> <td>2004/07/08</td> </tr> </tbody> </table>	DIMENSION STYLE		IN/MM	DATE	IN/MM	2004/07/08	TITLE		MOLEX INCORPORATED
			mm	INCH																							
		4 PLACES	± ---	± ---																							
3 PLACES	± ---	± .005																									
2 PLACES	± 0.13	± .007																									
1 PLACE	± 0.18	± ---																									
DIMENSION STYLE																											
IN/MM	DATE																										
IN/MM	2004/07/08																										
DRAFT WHERE APPLICABLE MUST REMAIN WITHIN DIMENSIONS	APPROVED BY DATE BRUSSELL 2004/07/08	MATERIAL NO. 747470001	DOCUMENT NO. SD-74747-001	SHEET NO. 5 OF 5																							
THIS DRAWING CONTAINS INFORMATION THAT IS PROPRIETARY TO MOLEX INCORPORATED AND SHOULD NOT BE USED WITHOUT WRITTEN PERMISSION																											

19 | 18 | 17 | 16 | 15 | 14 | 13 | 12 | 11 | 10 | 9 | 8 | 7 | 6 | 5 | 4 | 3 | 2 | 1