

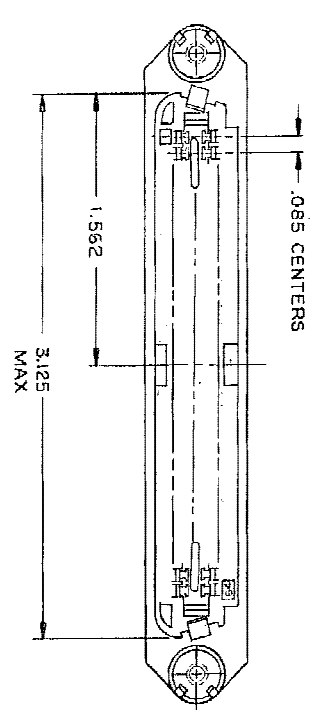
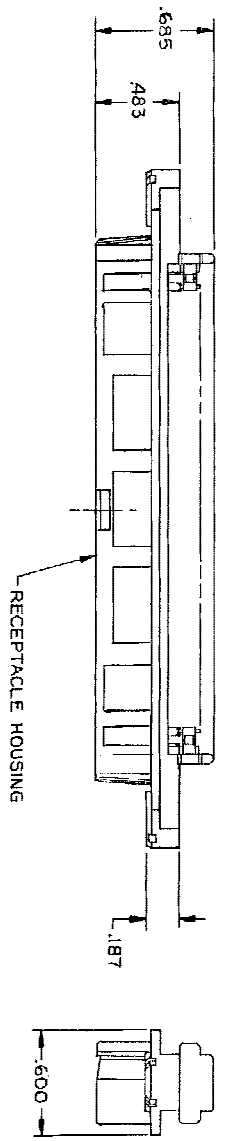
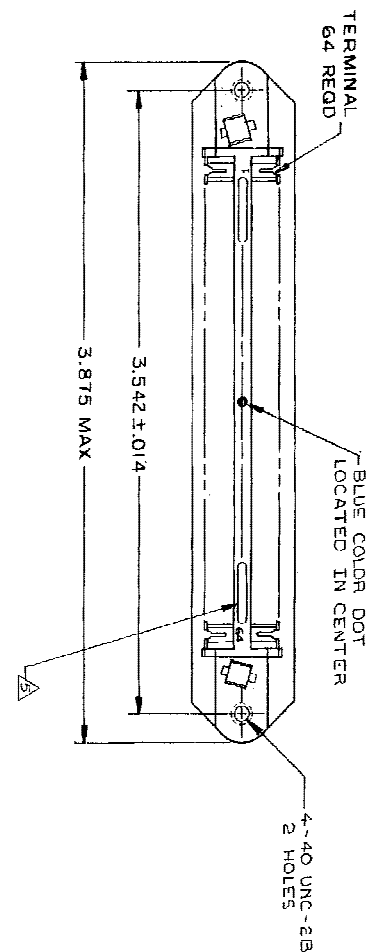
Distributed by:

JAMECO[®]
ELECTRONICS

www.Jameco.com ♦ 1-800-831-4242

The content and copyrights of the attached
material are the property of its owner.

Jameco Part Number 956441



1. THE CONTACT SURFACES OF THE TERMINALS ARE COATED WITH LUBRICANT.
 2. ALL DIMENSIONS SHOWN ARE FOR REFERENCE ONLY UNLESS OTHERWISE SPECIFIED.
 3. MATERIAL:
HOUSING - THERMOPLASTIC (BLACK)
TERMINALS: - HIGH STRENGTH COPPER ALLOY PLATED WITH .000030 MIN GOLD OR GOLD FLASH OVER .000030 MIN PALLADIUM NICKEL ON CONTACT MATING SURFACE. .000050 MIN NICKEL UNDERPLATE OVER ENTIRE TERMINAL.
 4. WIRE SIZE: 24 & 26 AWG SOLID & 24 AWG 7 STRANDS OF COPPER CONDUCTORS. MAX INSULATION DIAMETER OF .045 IS ACCEPTABLE FOR MOST APPLICATIONS.
- △ CORING MAY OR MAY NOT APPEAR AND IS AT THE DISCRETION OF TYCO ELECTRONICS.

REV	DATE	DESCRIPTION	BY	CHKD
00				
J	2/1/80/04	REVISED PER EC-86-02624	ZR	WM

THIS DRAWING IS A CONTROLLED DOCUMENT		REV	2-11-86	DATE	2-11-86
DRAFTER: J. S. BOWMAN		APP	2-12-86	DATE	2-12-86
CHECKER: J. S. BOWMAN		APP	2-12-86	DATE	2-12-86
DESIGNER: J. S. BOWMAN		APP	2-12-86	DATE	2-12-86
DRAWN: J. S. BOWMAN		APP	2-12-86	DATE	2-12-86
SCALE: NTS		APP	2-12-86	DATE	2-12-86
MATERIAL: TYPICAL		APP	2-12-86	DATE	2-12-86

AMP 1471-9 REV 3/10/80

AS SHOWN 552315-1

DESCRIPTION PART NO

TYCO Electronics Corporation
Hunting Park 1708-3688

ASSEMBLY RECEPTACLE
SERIES POSITION, B SIDE
CHARACTERISTICS 4-40 HOLES

SCALE: NTS SHEET 1 OF 1 REV J

552315