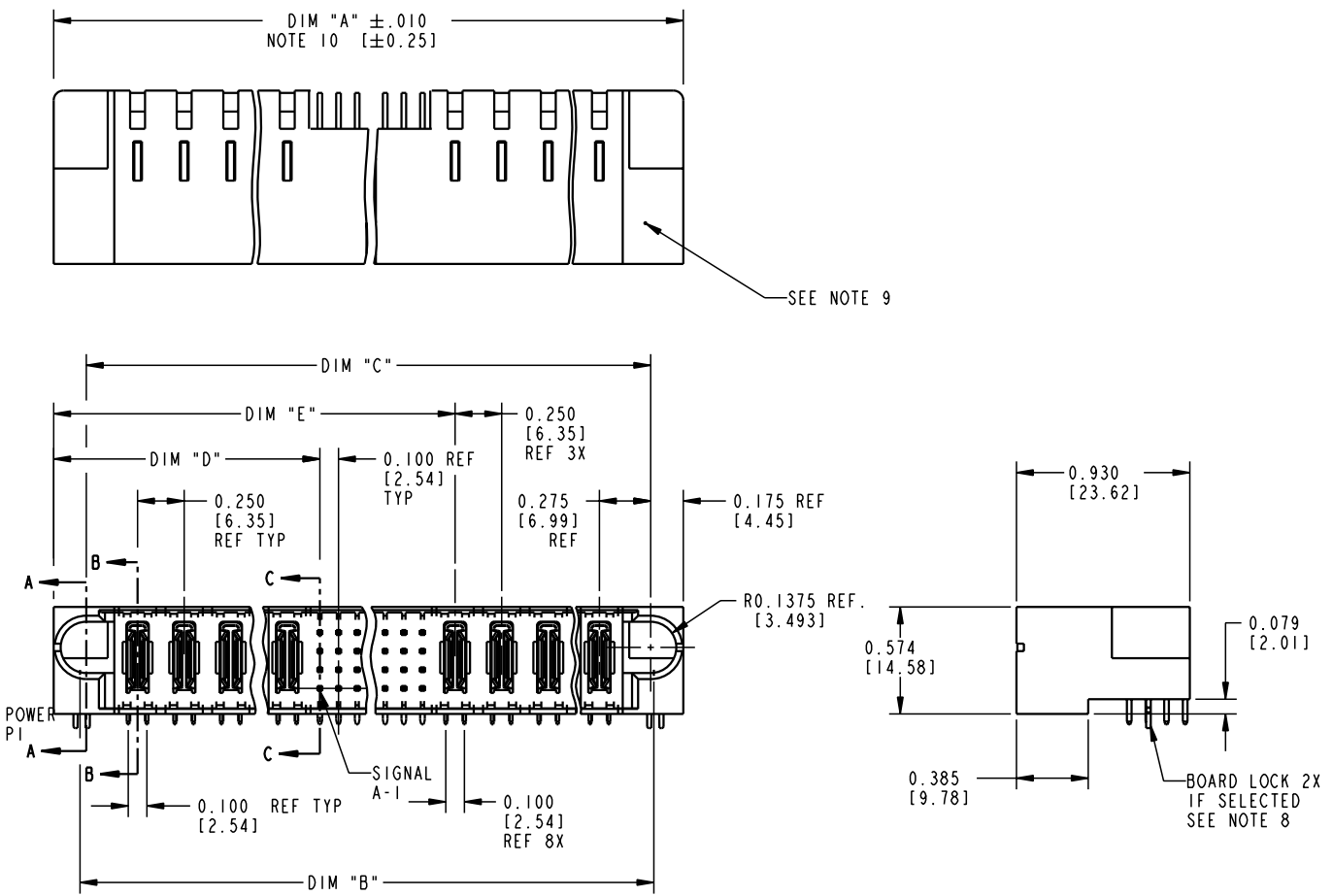


Tous droits strictement réservés. Reproduction ou communication o des tiers interdite sous quelque forme que ce soit sans autorisation écrite du propriétaire. Propriete de c FCI. Droits de reproduction FCI.



All rights strictly reserved. Reproduction or issue to third parties in any form whatever is not permitted without written authority from the proprietor. Property of FCI. Copyright FCI.

PRODUCT NUMBER
51730-YYY
SEE NOTE 1



mat'l code SEE NOTE 2				tolerances unless otherwise specified		CUSTOMER COPY		<b>ELECTRONICS</b> www.fciconnect.com	
ltr	ecn no.	dr	date	linear	.XX±.01/.X±.3		projection 	title RIGHT ANGLE HEADER w/GUIDE PIN POWER / SIGNAL / POWER SPECIALS	
R	V01998	CHB	08-18-00		.XXX±.005/.XX±.13			product family PwrBlade	
S	V02098	CHB	09-06-00	angles	.xxx±.0020/.xxx±.051		 INCH / MM scale 1:1	size dwg no 51730	
T	V02387	JRW	10-03-00		0°±2°			A	
U	V02524	JWS	10-10-00	dr	C. BAROT	08-02-99	cage code 22526		
V	V02711	JRW	10-30-00	engr	J. BROWN	08-02-99			
W	V02906	JRW	01-30-01	chr	J. BROWN	08-02-99			
X	V20009	JWS	01-09-02	appd	J. BROWN	08-02-99			
sheet index	revision sheet	X 1	X 2	X 3	X 4				

form no. 7530-001-103

Tous droits strictement réservés. Reproduction ou communication o des tiers interdite sous quelque forme que ce soit sans autorisation écrite du propriétaire. Propriété de c FCI. Droits de reproduction FCI.



All rights strictly reserved. Reproduction or issue to third parties in any form, whatever is not permitted without written authority from the proprietor. Property of FCI. Copyright FCI.

PRODUCT NUMBER		DIM		LENGTH FORMULAS (SEE NOTE 4, 5, 6 and 10)	
51730-YYY		DIM "A"		.250 [6.35] x BB + .100 [2.54] x (CCC/4) + .250 [6.35] x DD + .650 [16.51](NOTE 10)	
SEE NOTE 1		DIM "B"		.250 [6.35] x BB + .100 [2.54] x (CCC/4) + .250 [6.35] x DD + .350 [8.89]	
		DIM "C"		.250 [6.35] x BB + .100 [2.54] x (CCC/4) + .250 [6.35] x DD + .300 [7.62]	
		DIM "D"		.250 [6.35] x BB + .375 [9.53]	
		DIM "E"		.250 [6.35] x BB + .100 [2.54] x (CCC/4) + .450 [11.43]	
		DIM "F"		.250 [6.35] x BB + .100 [2.54] x (CCC/4) + .250 [6.35] x DD + .680 [17.27]	
		DIM "G"		.250 [6.35] x BB + .225 [5.72]	
		DIM "H"		.250 [6.35] x BB + .100 [2.54] x (CCC/4) + .250 [6.35]	

**CONNECTOR NOTES**

- PRODUCT NUMBERING CODE FOR SELECT LOAD PART NUMBERS:  
51730 - YYY  
  - SEQUENCE NUMBER (SEE PAGE 4)
  - BASE NUMBER
- HOUSING MATERIAL: GLASS FILLED V-O HIGH TEMP THERMO PLASTIC.  
SIGNAL CONTACT MATERIAL: PHOS BRONZE  
POWER CONTACT MATERIAL: COPPER ALLOY
- PLATING OPTION:  
1 = SIGNAL PINS: 30u" / .76u OVER 50u"/1.27u Ni  
POWER CONTACTS: 50u" / 1.2u Ni UNDER ALL; WITH 30u"/.76u" Au ON CONTACT AREA WITH SnPb ON PCB INTERFACE
- LEFT END POWER CONTACTS, 01 TO 19 AVAILABLE. MAXIMUM OF 20 POWER CONTACTS PER CONNECTOR. SPECIFIED AS "BB" ON LENGTH FORMULAS
- SIGNAL CONTACTS, 004 TO 148 AVAILABLE. SPECIFIED AS "CCC" ON LENGTH FORMULAS
- RIGHT END POWER CONTACTS, 01 TO 19 AVAILABLE. MAXIMUM OF 20 POWER CONTACTS PER CONNECTOR. SPECIFIED AS "DD" ON LENGTH FORMULAS
- TAIL OPTIONS:  
A = .135 ±.010 [3.43 ±0.25] SOLDER TO BOARD
- RETENTION TO PCB OPTIONS:  
A = BOARD LOCK (REQUIRES .098 + .002, -.001 [2.49 +0.05, -0.03] THRU HOLE IN PCB). MOUNTING FOOT THICKNESS: 0.220 [5.59]  
B = .150 [3.81] THRU HOLE (REQUIRES .158±.003 [4.01±08] THRU HOLE IN PCB). MOUNTING FOOT THICKNESS: 0.160 [4.06]
- MANUFACTURE'S NAME, P/N, AND DATE CODE TO APPEAR ON THIS SURFACE.
- THE MAXIMUM OVERALL LENGTH (DIM A) OF A PART IS 8.00 [203.2]  
11. PRODUCT SPECIFICATION GS-12-149  
12. REFERENCE 51697 FOR SPECIALS WORKSHEET.

**PCB NOTES:**

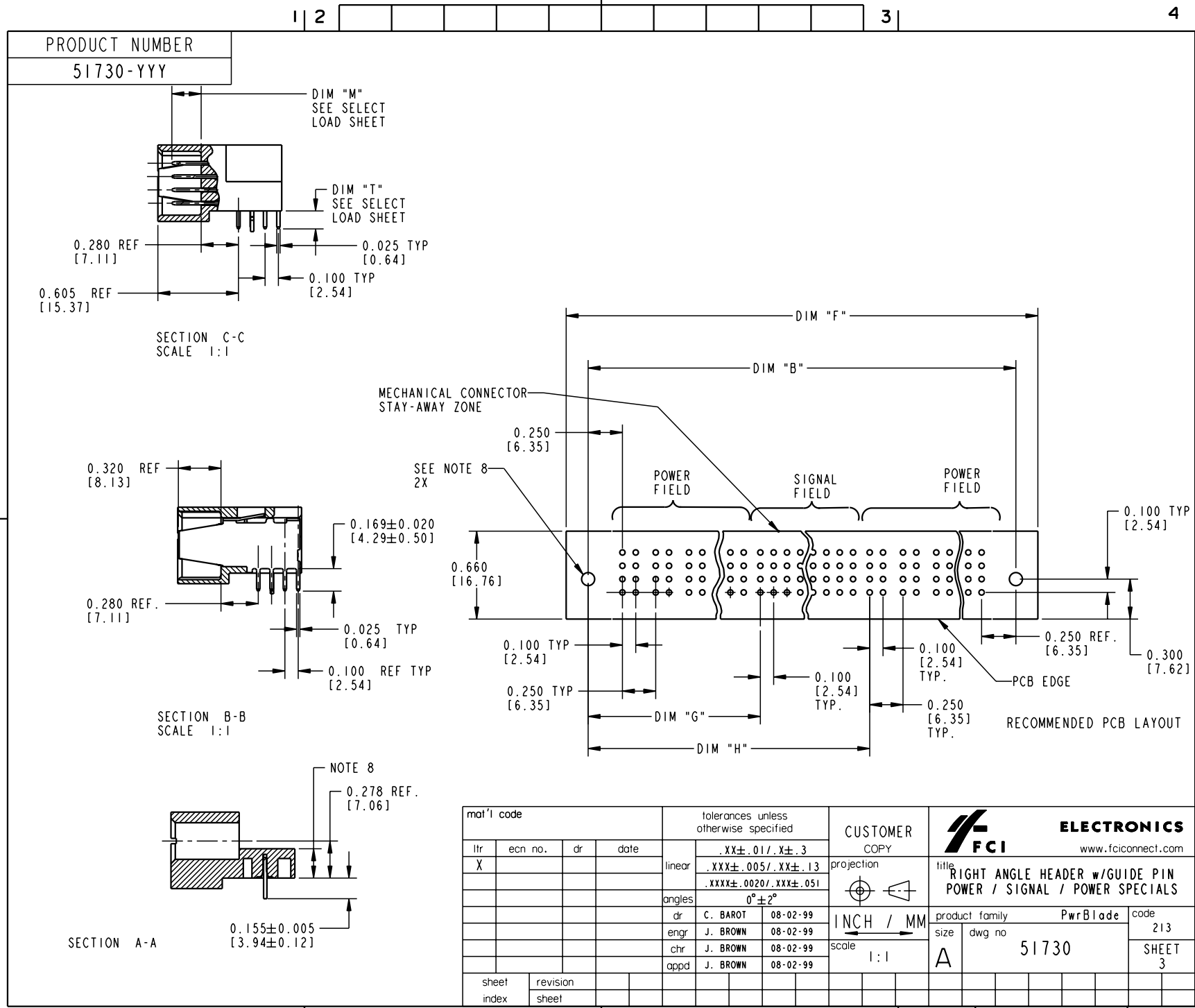
- ALL DIMENSIONS ARE BASIC UNLESS OTHERWISE SPECIFIED.
- ALL THROUGH HOLES ARE LOCATED WITH A TRUE POSITION OF .004[0.10]
- ALL HOLE DIAMETERS ARE FINISHED HOLE SIZE.
- Ø0.0453 ±.001 [1.151 ±0.02] DRILLED HOLES PLATED WITH 0.0003 [0.007] MIN SnPb OVER 0.001 [1.03] TO .003 [0.08] PLATING TO ACHIEVE A .040±.003 [1.02±08] HOLE.

mat'l code				tolerances unless otherwise specified				CUSTOMER COPY		<b>ELECTRONICS</b> www.fciconnect.com	
ltr	ecn no.	dr	date	linear	.XX±.01 / .X±.3		projection			title	
x					.XXX±.005 / .XX±.13					RIGHT ANGLE HEADER w/GUIDE PIN POWER / SIGNAL / POWER SPECIALS	
					.XXX±.0020 / .XXX±.051					product family	
				angles	0°±2°		INCH / MM scale 1:1	PwrBlade		code	
				dr	C. BAROT	08-02-99		size		213	
				engr	J. BROWN	08-02-99		dwg no		SHEET	
				chr	J. BROWN	08-02-99		51730		2	
				appd	J. BROWN	08-02-99	A				
sheet index	revision sheet										

Tous droits strictement réservés. Reproduction ou communication o des tiers interdite sous quelque forme que ce soit sans autorisation écrite du propriétaire. Propriété de c FCI. Droits de reproduction FCI.



All rights strictly reserved. Reproduction or issue to third parties in any form whatever is not permitted without written authority from the proprietor. Property of FCI. Copyright FCI.



mat'l code				tolerances unless otherwise specified		CUSTOMER COPY		<b>ELECTRONICS</b> www.fciconnect.com	
ltr	ecn no.	dr	date	linear	.XX±.01/.X±.3	projection		title	
X					.XXX±.005/.XX±.13			RIGHT ANGLE HEADER w/GUIDE PIN	
				angles	.XXX±.0020/.XXX±.051			POWER / SIGNAL / POWER SPECIALS	
				dr	C. BAROT 08-02-99	INCH / MM	product family	PwrBlade	code
				engr	J. BROWN 08-02-99	scale	size	51730	213
				chr	J. BROWN 08-02-99	1:1	dwg no	51730	SHEET
				appd	J. BROWN 08-02-99		A	3	3
sheet index	revision sheet								
								cage code	22526

form no. 7530-001-103

cage code 22526

Tous droits strictement reserves. Reproduction ou communication o des tiers interdite sous quelque forme que ce soit sans autorisation écrite du propriétaire. Propriete de c FCI. Droits de reproduction FCI.



All rights strictly reserved. Reproduction or issue to third parties in any form whenever is not permitted without written authority from the proprietor. Property of FCI. Copyright FCI.

SIGNAL CONTACT			
CODE	DIM "M"	DIM "T"	ROW
E	.220 [5.59]	.135 [3.43]	A
F	.220 [5.59]	.135 [3.43]	B
G	.220 [5.59]	.135 [3.43]	C
H	.220 [5.59]	.135 [3.43]	D
R	.270 [6.86]	.135 [3.43]	A
S	.270 [6.86]	.135 [3.43]	B
T	.270 [6.86]	.135 [3.43]	C
U	.270 [6.86]	.135 [3.43]	D
X	OMITTED	OMITTED	-

POWER CONTACT	
CODE.	DIM "T"
PA	.135[3.43]
X	OMITTED

mat'l code				tolerances unless otherwise specified		CUSTOMER COPY		<b>ELECTRONICS</b> www.fciconnect.com	
ltr	ecn no.	dr	date	linear	.XX±.01/.X±.3		projection	title RIGHT ANGLE HEADER w/GUIDE PIN POWER / SIGNAL / POWER SPECIALS	
x					.XXX±.005/.XX±.13				
				angles	.XXX±.0020/.XXX±.051		INCH / MM scale 1:1	product family PwrBlade code 213	
					0°±2°			size dwg no 51730 SHEET 4	
				dr	C. BAROT	08-02-99			
				enrg	J. BROWN	08-02-99			
				chr	J. BROWN	08-02-99			
				appd	J. BROWN	08-02-99			
sheet index	revision sheet								

form no. 7530-001-103

cage code 22526

PDM: Rev:X

STATUS: Released

Printed: Aug 11, 2007